



# City Wide On-Call Engineering Services Transportation and Storm Drainage

Projects 7843, 7844, & 7845 | May 20, 2020

**MOLZENCORBIN**  
ENGINEERS | ARCHITECTS | PLANNERS



# MOLZEN CORBIN

May 20, 2020

Ms. Myrna Marquez, Administrator and Chair  
Selection Advisory Committee Office  
Capital Implementation Program Division Office  
One Civic Plaza, 7th Floor, Room 7057  
Albuquerque/Bernalillo County Government Center  
Albuquerque, NM 87102

## **RE: Project No. 7843, 7844, and 7845, City Wide On-Call Engineering Services for Transportation and Storm Drainage**

Dear Ms. Marquez and Members of the Selection Committee:

As an Albuquerque-based firm, Molzen Corbin offers the City the best of both worlds: high-quality, high-value projects delivered quickly and efficiently at lower local rates. Our extensive experience providing on-call services and our local knowledge will result in multiple benefits for the City of Albuquerque:

- **Local Knowledge and City Experience:** With corporate headquarters adjacent to the Albuquerque International Sunport, Molzen Corbin has provided continuous aviation engineering services there for more than 50 years. In addition, our in-house Electrical, Mechanical, Civil, Water Resources, and Architectural Departments have designed many different projects for the City ranging from storm water lift stations to roadway lighting and signals to full street reconstruction. This experience has made us very familiar with the City's processes and procedures.
- **Quick Project Turnaround:** Molzen Corbin pioneered the use of on-call engineering services in the 1980s. Today, our core customer base consists of retainer clients whom we have served for decades. **We serve public entities exclusively and we are organized specifically for rapid response to their day-to-day needs.** Our project engineers are only a phone call away and can be at your project sites within minutes—the Molzen Corbin team will hit the ground running on your projects, delivering solutions quickly and efficiently.
- **Maximum Value for the Money:** As specialists in municipal consulting, we are practiced and accustomed to working within stringent budget restraints. **As an Albuquerque-based company, we have structured our business to provide competitive services to public entities.** First and foremost, our resources are used to ensure that every project, conversation, and task deliver value to our clients.
- **We invite you to check our “on-call” references:** We have filled many roles from serving as construction observers to municipal engineers for more clients than any other firm in the State.

We trust that the following submittal demonstrates the benefits of selecting the Molzen Corbin team. If you have any questions, please feel free to call me at (505) 242-5700. We look forward to working with you.

Sincerely,

MOLZEN CORBIN



Kevin W. Eades, PE  
Executive Vice President, Civil Engineering





**Section I: General Information .....1**

**Section II: Project Team Members .....2**

**Section III: Respondent Experience .....5**

**Section IV: Technical Approach.....12**

**Section V: Cost Control.....15**

**Required Forms**

- Agreement and Insurance Certification
- Pay Equity Reporting Form
- Insurance Certificate

# I. GENERAL INFORMATION

## About Molzen Corbin

Molzen Corbin is a nationally ranked firm with deep roots in this State. Established in Albuquerque in 1960, we employ 83 staff members who believe that New Mexico is a great place to live and work. We appreciate the challenges that our clients undertake and we respect their goals as our own.

Serving as a trusted extension of their staff, we apply decades of technical expertise and project experience to develop solutions tailored to the needs of each client. Our in-house team includes civil, electrical, mechanical, and water resources engineers; architects and landscape architects; grants administrators; surveyors; and construction observers, so our clients benefit from the convenience and cost savings of meeting diverse project needs with a centralized team.

Molzen Corbin is specifically organized and staffed to provide rapid response to the day-to-day needs of our clients. **We currently hold on-call contracts with 30 municipalities and counties in New Mexico, including two on-call contracts with the City of Albuquerque Aviation Department.** Over the years we have provided on-call engineering and architectural services to public entities throughout the State.

## Name, Address, Telephone Number and Date When Firm Was Established

Molzen Corbin was established in 1960. Our corporate offices are located at 2701 Miles Road SE, Albuquerque, New Mexico, 87106, (505) 242-5700.

## Employees, Technical Disciplines and Registration Data

Molzen Corbin offers a staff of 83 professionals and support personnel. For discipline and registration data of project team members, please see the résumés on pages 2 through 4.

### In-House Staffing Breakdown

Architecture Dept.....	6
Civil Engineering Dept.....	21
Water Resources Engineering Dept.....	12
Electrical Engineering Dept.....	5
CAD/Design Technicians .....	12
Construction Observers .....	10
Surveyors .....	3

Grants Specialist .....	1
Computer Specialists .....	1
Administrative/Clerical .....	12
<b>Total Molzen Corbin Staff.....</b>	<b>83</b>

## Where Services are to Be Performed

Molzen Corbin's in-house staff will perform all work from our Albuquerque office. Our subconsultants will provide work from:

- **Geotechnical** — NorthGES, LLC, 4915 Cumbre del Sur Ct. NE, Albuquerque, NM 87111
- **Surveying/ROW** — Tierra Right of Way, 4107 Montgomery Blvd NE, Albuquerque, New Mexico, 87109
- **Subsurface Utility/Potholing** — High Mesa, 6010 Midway Park Blvd. NE, Suite B, Albuquerque, NM 87109
- **Environmental** — Pathfinder Environmental, LLC, 1800 Old Pecos Trail, Suite E, Santa Fe, New Mexico 87505
- **Traffic Analysis** — Civil Transformations Inc., 2929 Coors Boulevard NW, Suite 102F, Albuquerque, NM 87120



*Our partnership with the City of Albuquerque spans five decades, providing unmatched support to the City's Aviation Department (at the International Sunport and the Double Eagle II Airport). This support included multiple phases of improvements on Sunport Blvd. (Shown)*



## Organization Plan for Project Management

We propose a highly qualified project team, whose members have completed successful projects on an on-call basis for municipalities throughout New Mexico, and who have supported the City of Albuquerque on an on-call basis for more than 31 years. Molzen Corbin has a solid track record for meeting project schedules, including condensed schedules. Our project experience, depth of staff, and technical expertise enable us to quickly mobilize our resources to align them with concurrent activities on complex projects.

Based on our extensive experience, the depth of our staff and our familiarity with your processes, administration, and infrastructure, we can unequivocally state that we will be able to accommodate the City's project needs, including any and all specialized services, to meet any necessary time limitations. We bring you the most knowledgeable and talented individuals to address your needs during the course of this on-call contract. An organizational chart is shown in Figure 1.

Résumés and specific qualifications and experience of key team members begin below.

## Qualifications of Project Team Members

### Kevin Eades, PE: Principal-in-Charge

**Mr. Eades is Molzen Corbin's Executive Vice President and brings 25 years of experience** in engineering and project management to this contract. He has extensive experience managing contracts, coordinating projects and master plans, and working with communities across New Mexico. Mr. Eades is especially talented in working with clients on a one-to-one basis to ensure that their organizational needs are being met. He has served as the Technical Services Manager for numerous on-call contracts, including Belen (24 years) and Los Lunas (24 years), covering tasks across all engineering disciplines.



**Registration:** NM PE #14481 | **Education:** BS, Civil Engineering, New Mexico State University | **Memberships:** American Society of Civil Engineers (ASCE), NMSU Dean's Advisory Council for College of Engineering

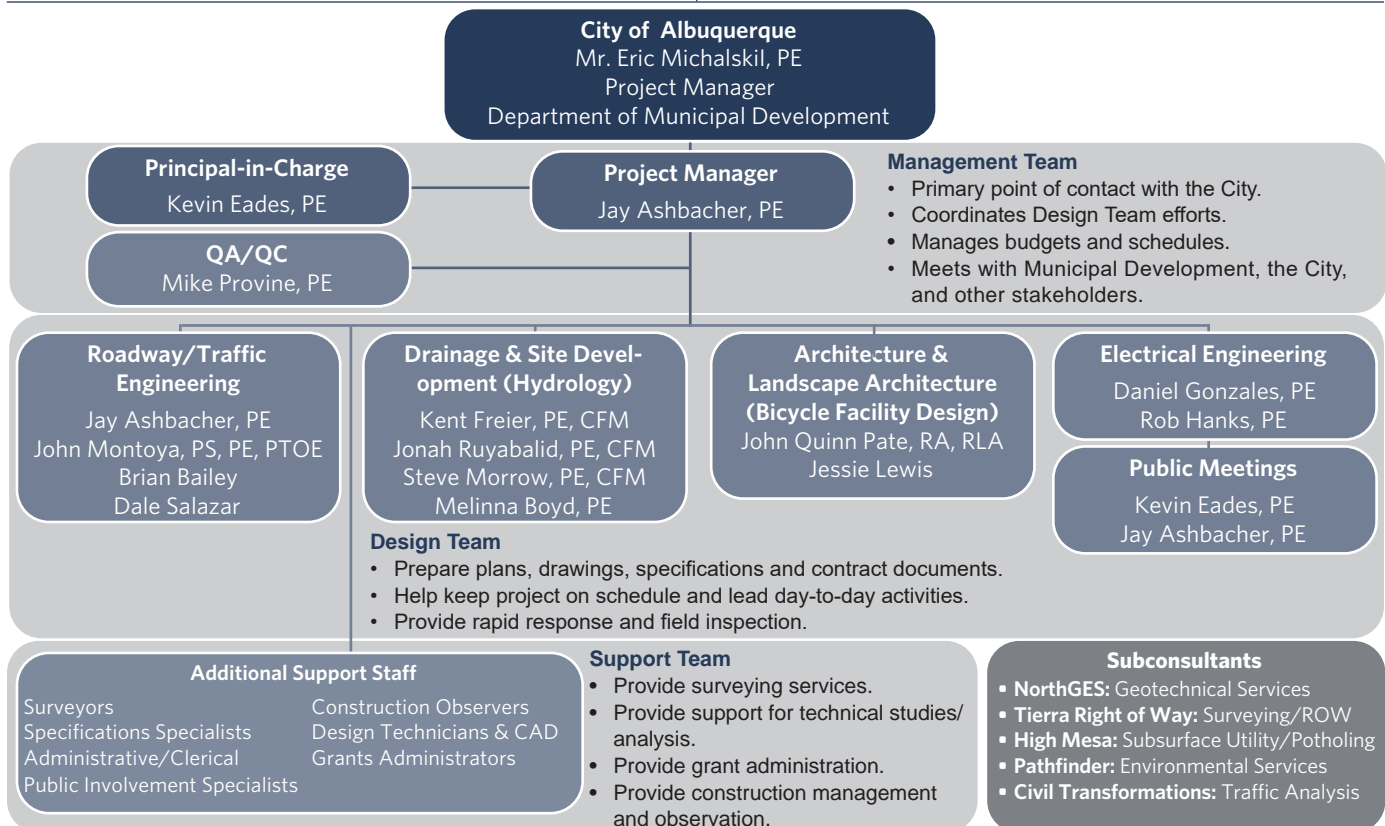


Figure 1. Molzen Corbin's project team can deploy quickly to any area within Albuquerque and will "hit the ground running" on your projects.



**Mike Provine, PE: Quality Assurance/Quality Control**

Mr. Provine has served as Project Manager on Molzen Corbin's On-Call Contract with the City of Albuquerque's Aviation Department for over 31 years, and offers unparalleled familiarity with the City's facilities, processes, and procedures. During his 35-year career, he has served as the project manager and project engineer on airfield improvements, streets, sanitary and storm sewer systems, water distribution and transmission lines, water wells and reservoirs and site grading and drainage projects. He has overseen more than \$252 million in design and planning projects across the State.



**Registration:** NM PE #10997 | **Education:** BS, Civil Engineering, New Mexico State University | **Memberships:** New Mexico Airport Managers Association (NMAMA) and ASCE

**Jay Ashbacher, PE: Project Manager**

Mr. Ashbacher has six years of experience focusing on transportation engineering. His recent experience includes designing residential, collector and arterial roadways with an emphasis in local government and NMDOT/FHWA



coordinated projects. **Prior to joining Molzen Corbin, Mr. Ashbacher garnered two years of pre-professional engineering experience with the City of Albuquerque's Traffic Engineering Department.**

Recent relevant project experience includes NM 314 Bike/Pedestrian Improvements and NM 6/NM 47 Intersection Improvements, Los Lunas; Sunset Boulevard Improvements, Bernalillo County; Sunport Sign Rehabilitation, Albuquerque.

**Registration:** NM PE #24575 | **Education:** BS, Civil Engineering, University of New Mexico | **Memberships:** Institute of Transportation Engineers

Team Member	Qualifications
<b>John Montoya, PE, PS, PTOE: Roadway/Traffic Engineering</b> Registration: NM PE #12426; NM PS #13057; PTOE #34267   Education: B.S. in Civil Engineering Technology, NMSU   Memberships: National Society of Professional Engineers, NM Professional Surveyors/American Congress on Surveying and Mapping	Mr. Montoya has 34 years of experience as a project manager, engineer/technician, and construction observer on transportation projects. These projects have included residential streets, highway design, urban arterials, traffic control, traffic signalization, roadway alignment studies, right-of-way acquisition, drainage and grading design, stormwater detention basin design, storm sewer design, site development, and parking lot design.
<b>Brian Bailey: Roadway/Traffic Engineering</b> Education: A.E. in Civil Engineering and Surveying Technology, Vermont Technical College	Mr. Bailey has 39 years of professional experience designing bridges and highways. He has completed several projects with the NMDOT and the City of Albuquerque, and is very familiar with Bernalillo County roadways. Experience: West Central Avenue Improvements, Albuquerque; Unser Blvd., Albuquerque; I-25/NM 14 (Cerrillos Road) DDI, NMDOT; I-10 Six-Lane Project, NMDOT; and I-10/NM 404 Interchange, NMDOT.
<b>Dale Salazar, CET, ATSSA: Roadway/Traffic Engineering</b> Registration: Traffic Control Supervisor, ATSSA; Transportation Engineering Technology Design Level I – NICET   Education: AS, Drafting/CAD Management, Muir College	Mr. Salazar has an associate's degree in drafting and 26 years of experience as a design technician, with a focus in civil design and airport improvements. His recent project experience includes Unser Boulevard Improvements, City of Albuquerque; Atrisco Vista Boulevard (Double Eagle II Access Road) Reconstruction and Runway 4-22/Taxiway A Reconstruction, Double Eagle II Airport; and Long-Term Parking Reconstruction, Albuquerque International Sunport.
<b>Kent Freier, PE, CFM: Drainage &amp; Site Development</b> Registration: NM PE #8182, NM CFM# 13-00337   Education: BS, Civil Engineering, Texas Tech University   Memberships: ASCE, American Association of Airport Executives (AAAE), NM Flood Plain Manager's Association	Mr. Freier's 41 years of experience includes nearly every facet of storm drainage including flood control dams, emergency spillways. Roadway experience includes design of urban arterials, rural highways, and residential streets. Experience: Sunport Rental Car Facility (grading and drainage for 55-acre site), Albuquerque; Lomas Boulevard/Eubank Boulevard Intersection Improvements, Albuquerque; and Sunport Boulevard, Albuquerque.
<b>Jonah Ruybalid, PE, CFM: Drainage &amp; Site Development</b> Registration: NM PE #23909, NM CFM #12-00315   Education: B.S. in Civil Engineering, NMSU	Mr. Ruybalid is a Certified Floodplain Manager with eight years of experience in civil and water resources engineering, including roadway, drainage, site development, sewer line, and water line planning and design. Experience: I-25/NM 14 (Cerrillos Road in Santa Fe) Drainage Analysis and Design and NM 47 Roadway Improvements (Peralta) Drainage Analysis and Design.
<b>Steve Morrow, PE, CFM: Drainage &amp; Site Development</b> Registration: NM PE #13679; NM CFM #11-00288   Education: BS in Civil Engineering, NMSU   Memberships: ASCE, Chi Epsilon (the Civil Engineering Honor Society), NM Flood Plain Manager's Association	Mr. Morrow has 27 years of experience as a design and construction engineer, and manages a wide variety of design projects for Molzen Corbin in both the Water Resources and Civil Departments. He has a strong background in transportation, drainage, water, sewer, and storm drain design as well as construction management. He was the Project Engineer on the design of ACE, an 80-acre commercial development at the Albuquerque International Sunport.
<b>Melinna Boyd, PE: Drainage &amp; Site Development</b> Registration: NM PE #24510; NM CFM #11-00288   Education: BS in Civil Engineering, NMSU   Memberships: ASCE, Chi Epsilon, NM Flood Plain Manager's Association	Ms. Boyd has six years of experience with Molzen Corbin. She performs drainage analysis, grading and drainage design, and traffic control design, and writes funding applications. Experience: Grading and Drainage Design for the Adelante Bargain Center, Los Lunas; NM 314 Bicycle and Pedestrian Improvements—Drainage Design/Cost And Quantity Estimation, Los Lunas; and Grading and Drainage Plan Reviews, Los Lunas.
<b>John Quinn Pate, RA, RLA: Architecture &amp; Landscape Architecture</b> Registration: NM RA #1784; NM RLA #87   Education: BA, Architecture, University of New Mexico   Memberships: American Institute of Architects	Mr. Pate has 44 years of experience in architecture and landscape architecture, with a large body of work with Bernalillo County. Recent City of Albuquerque projects include the ACE Infrastructure Project, Terminal Improvements Project, Sunport Boulevard, US Customs Renovations, and Rental Car Facility Remodeling.

<b>Jessie Lewis: Architecture &amp; Landscape Architecture</b> Education: BA, Environmental Planning and Landscape Design, University of New Mexico	Ms. Lewis has 13 years of experience in multi-use site planning, recreational parks, and landscape restoration. Experience: Aviation Center of Excellence Landscape, Albuquerque; UNM Athletics Site Development, UNM; Double Eagle II Airport Maintenance Facility Landscape, Albuquerque; Veteran's Memorial Park and Village Center Site Planning and Landscaping, Tijeras; and Becker Avenue Improvements/Streetscape, Belen.
<b>Daniel Gonzales, PE: Electrical Engineering</b> Registration: NM PE #19969   Education: BS, Electrical Engineering Technology NMSU	Mr. Gonzales has 14 years of professional design experience in power, instrumentation and controls (I&C), specifications, pre-design analysis and reports, cost estimates, and construction coordination. Experience: Sunport Parking Lot Lighting, Albuquerque; Sunport General Aviation Parking Lot Improvements, Albuquerque; and 1 Megawatt Photovoltaic System, Albuquerque.
<b>Robert Hanks, PE: Electrical Engineering</b> Registration: NM PE #23949   Education: BS, Electrical Engineering, Louisiana Tech University	Mr. Hanks has more than 40 years of experience as an electrical engineer specializing in electrical and I&C system design and implementation. He has led the layout, design, and specification of I&C equipment and power systems for large industrial projects, water/wastewater treatment facilities, booster pump stations, and sewerage lift stations.
<b>Subconsultants (All have worked with Molzen Corbin on previous on-call contracts)</b>	
<b>John North, GE, PE, NorthGES: Geotechnical Services</b> Registration: NM PE #13211   Education: BS, Civil Engineering, M.S. Geotechnical Engineering, Berkley	Mr. North has 43 years project experience including planning, supervision, analysis, and design for a variety of projects including design studies of streets and highways, railroad bridges, commercial complexes, high-rise structures, embankments, and earth dams. Mr. North has extensive design and construction experience with highways and bridges, water/wastewater facilities, dam evaluation/rehabilitation, and commercial developments.
<b>Meghan Bayer, Tierra Right of Way: Surveying/ROW</b> Education: M.A., Community and Regional Planning, UNM	Right of way services are the foundation upon which Tierra was built in 1989. They offer a full range of acquisition and relocation assistance services for transportation and public infrastructure, electric transmission, pipeline, telecommunications, renewable energy, and private development projects of all sizes and complexity. Ms. Bayer has 16 years of experience and is Manager of Tierra's Right of Way Operations in New Mexico. She is responsible for overseeing right of way activities throughout the region.
<b>Joseph Gonzales, High Mesa: Subsurface Utilities Locating and Pot-holing</b>	Mr. Gonzales is a principal and project manager with High Mesa Consulting Group. He is an accomplished utility locating specialist with over 19 years of experience in the field of subsurface utilities. His areas of expertise include subsurface utility engineering support— quality levels A-B, damage prevention, utility locate oversight, strategic project scheduling, and training.
<b>Devin Kennemore. Pathfinder Environmental, LLC: Environmental Services</b>	Mr. Kennemore has over 28 years of experience working for private companies, states, local municipalities, federal agencies, and non-profit natural resource management organizations. Mr. Kennemore has substantial expertise in all aspects of NEPA compliance. He has managed and been the principal author of many complex environmental assessments.
<b>Tim Simmons, PE, PTOE, Civil Transformations, Inc.: Traffic Analysis</b> Registration: NM PE #12722; PTOE #437	Civil Transformations Inc. (CTI) provides infrastructure planning and design services with an emphasis on all facets of transportation and traffic engineering. Mr. Simmons has 26 years experience, and is proficient in traffic modeling and traffic analysis.

## Unique Knowledge of Key Team Members

Molzen Corbin's longevity of service to the City has resulted in an unparalleled knowledge of City processes, procedures, and standards. This unique knowledge is illustrated in Figure 2 below.

Team Member	Unique Qualifications	Benefit to the City of Albuquerque
<b>Kevin Eades, PE</b>	<ul style="list-style-type: none"> <li>Over 24 years of experience managing on-call contracts, including with Los Lunas, Belen, Tijeras, and Bernalillo</li> <li>Recent, relevant experience as project manager for City of Albuquerque projects, including Unser Blvd. and West Central Avenue</li> </ul>	<ul style="list-style-type: none"> <li>Accustomed to providing rapid, efficient response to client engineering requests, including emergency response</li> <li>Institutional knowledge will result in timely, cost-effective project completion</li> <li>Innovative approaches that save time and money</li> </ul>
<b>Jay Ashbacher, PE</b>	<ul style="list-style-type: none"> <li>Two years of pre-professional engineering experience with the City of Albuquerque's Traffic Engineering Department</li> <li>Experience with City of Albuquerque projects, including Unser Blvd. and West Central Avenue</li> <li>Six years of experience supporting on-call projects</li> </ul>	<ul style="list-style-type: none"> <li>Institutional knowledge will result in timely, cost-effective project completion</li> <li>Accustomed to providing rapid, efficient response to client engineering requests, including emergency response</li> </ul>
<b>Mike Provine, PE</b>	<ul style="list-style-type: none"> <li>Project Manager for City of Albuquerque Aviation Department for over 31 years</li> </ul>	<ul style="list-style-type: none"> <li>Continuity of leadership</li> <li>Understands City of Albuquerque process and requirements for Contract Documents</li> </ul>
<b>Kent Freier, PE and Dale Salazar, CET</b>	<ul style="list-style-type: none"> <li>More than 20 years experience each supporting the City of Albuquerque Aviation Department</li> </ul>	<ul style="list-style-type: none"> <li>Knowledge of City processes, procedures, and design standards will lead to timely, cost-effective designs</li> </ul>

**Figure 2. There is no learning curve with the Molzen Corbin Team. Our unparalleled knowledge will result in quicker schedules and reduced costs.**



### III. RESPONDENT EXPERIENCE

In addressing Molzen Corbin's technical experience relative to this City of Albuquerque contract, it is imperative to point out that Molzen Corbin pioneered the use of on-call engineering service contracts with our municipal clients in the 1980s.

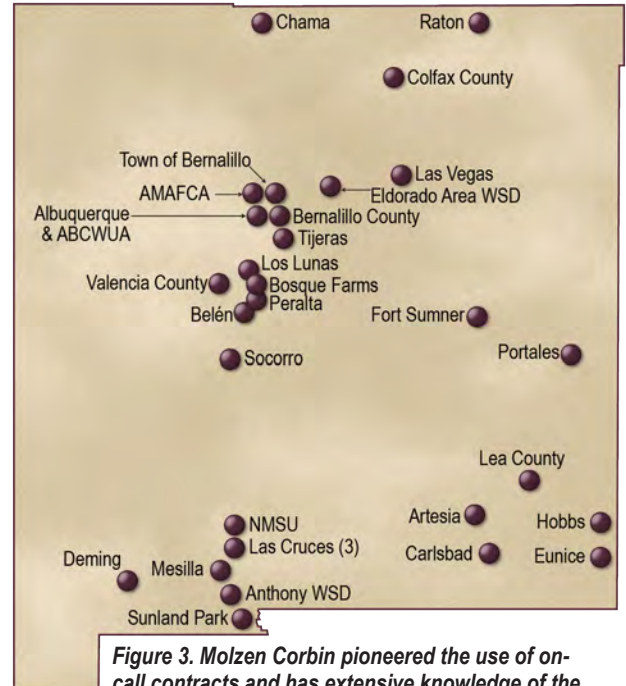
Today, open-end contract work is the core of our business. Molzen Corbin is specifically organized to provide rapid response to the day-to-day engineering and architectural needs of our clients. We currently hold 30 on-call contracts with public entities in New Mexico (see Figure 3 at right), **including two on-call contracts with the City's Aviation Department.** We consistently provide highly responsive service to all of our clients regardless of their location. Furthermore, our extensive regional and local knowledge enables us to design projects quickly and efficiently.

Our team's relevant experience with the services requested in the request for proposal, along with our project manager's experience, is further expounded within this section.

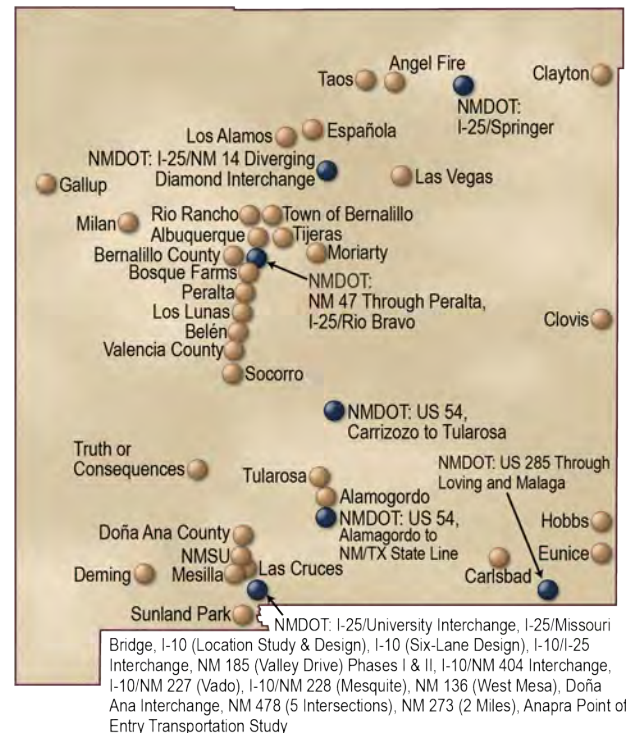
#### Roadway and Transportation Engineering

Molzen Corbin specializes in providing roadway design services to Federal, State and local entities. For these clients, we have designed more than 775 miles of roadway throughout New Mexico since 1960, including rural and urban arterials, residential streets, and interstate highways (Figure 4). **We serve many different cities, towns, and villages using "on-call" contracts such as this one to plan, design, and construct various roadway projects.** At any given time, our staff is working on multiple roadway design projects, which keeps us technically sharp and up to date on current MUTCD, NMDOT, FHWA, and AASHTO requirements.

Likewise, we have strong local and state-wide relationships with those agencies involved with funding, reviewing, and approving such projects. Our experience directly benefits the City in that we are capable of designing residential, collector, and arterial streets such as those common in the City. **A recent example is West Central Avenue for which we completed two major intersections for the City (Central/Lomas and Central/Rio Grande), as well as improvements to Unser Blvd. including the concrete intersection of Unser and Montañó.**



**Figure 3. Molzen Corbin pioneered the use of on-call contracts and has extensive knowledge of the infrastructure, topography and culture of municipalities throughout the State.**



**Figure 4. Molzen Corbin has designed more than 775 miles of roadway across New Mexico, including numerous projects for the NMDOT.**



## West Central Avenue, City of Albuquerque

### Relevance to this Contract

- Road diet
- ADA accommodations
- Multi-modal accommodations
- Innovative intersection design

The City of Albuquerque selected the Molzen Corbin team to analyze and design improvements to one of the busiest portions of West Central Avenue. Working for the City Council through the Department of Municipal Development, we proposed vehicular and pedestrian improvements at the intersections of Central/Rio Grande and Central/Lomas/San Pasquale, and a dedicated pedestrian and bicycle connection route between the Old Town area and the Albuquerque Aquarium and Botanical Garden.

Molzen Corbin worked with the public to satisfy eight different neighborhood associations and countless adjacent businesses along the corridor and in Old Town, and the traveling public from the west side of Albuquerque who use the Central bridge crossing of the Rio Grande. We conducted major public meetings and created a project website as part of our public outreach effort.

The final design included intersection and traffic signal and channelization improvements, sidewalk and ADA improvements, landscape enhancements, and incorporated Bus Rapid Transit (Albuquerque Rapid Transit) provisions and features.

**Contact:** Melissa Lozoya, PE, City of Albuquerque Department of Municipal Development, (505) 768-2680 | **Year:** 2017 | **Cost:** Approx. \$4.0 Million | **Key Staff:** Eades, Ashbacher, Bailey

*Molzen Corbin worked with the City, as well as residents, to analyze and improve traffic flow on one of Albuquerque's most traveled roadways.*



arterial and interchange location for primary access between the airport and I-25. The study was accomplished in accordance with NMDOT location study procedures.

- **Sunport Boulevard Access Road**—This \$21.3 million project for the City of Albuquerque included 1.1 miles of a multi-lane principal arterial (with median limited access) extending from I-25 to the Albuquerque International Sunport terminal. The project included an urban diamond interchange, three bridges, retaining walls, a major storm sewer system, sanitary sewer and waterline relocations, landscaping, traffic control, signalization, street lighting, permanent signing, and construction management services. Molzen Corbin designed the project to meet NMDOT criteria and standards. Our landscape architects also enhanced the appearance of the project to make this facility a featured entrance to the City of Albuquerque.

## Sunport Boulevard, City of Albuquerque

### Relevance to this Contract

- Road diet
- ADA accommodations
- Multi-modal accommodations
- Innovative intersection design

Molzen Corbin has provided professional services for the following phases of Sunport Boulevard:

- **Sunport Boulevard Corridor Study**—In conjunction with major terminal renovations at the Albuquerque International Sunport, Molzen Corbin performed a transportation corridor study for the City to evaluate route alignments for a principal

- **I-25 Bridge Project**—This project connected Sunport Boulevard to I-25. Molzen Corbin designed a diamond interchange, curb and gutter, retaining walls, lighting, traffic control, signalization, signing, landscaping, and storm drain system.
- **Sunport Blvd. Rehabilitation** – Sunport Boulevard and the Terminal Loop were milled and overlaid. In addition, an open grade friction course was laid.

**Contact:** Jim Hinde (Retired), (505) 244-7725 | **Year:** 1997–1998; 2011 | **Cost:** \$6.4 Million (I-25 Bridge Project); \$21.3 Million (Access Road); \$1.25 Million (Rehabilitation) | **Key Staff:** Provine, Bailey, Salazar, Pate, Freier, Gonzales



Molzen Corbin has worked with the City to design multiple improvements to Sunport Blvd over the past 20 years.

## Sunset Road, Bernalillo County

### Relevance to this Contract

- Traffic calming
- Storm drain improvements
- Right-of-way acquisition
- ITS, utility, and environmental coordination

Sunset Road is an urban collector in Bernalillo County that was in need of roadway and safety improvements. The project involved flood mitigation, the addition of new sidewalks, access management, and pavement rehabilitation.

The focus of the design was driven by safety. Because the project location is directly adjacent to Armijo Elementary School, special consideration was given to pedestrian facilities. Traffic calming devices were included to prevent excessive speeding along this corridor and to encourage through traffic to take the available higher capacity routes of Goff Blvd and Isleta Blvd. Molzen Corbin implemented the use of mini traffic circles at the roadway intersections. Additionally, the project included the installation of a storm drain system and new sanitary sewer collector lines.

The County received federal funding for the Sunset Road Improvements project and Molzen Corbin aided in the required coordination with the New Mexico Department of Transportation. The coordination included rail, right-of-way, ITS, utility, and environmental certifications, as well as design reviews for the 30%, 60%, 90%, and PS&E milestones.

**Contact:** Rodrigo Eichwald, 505-848-1574 | **Year:** 2014 | **Cost:** \$4,988,421 | **Key Staff:** Eades, Ashbacher, Bailey, Pate, Gonzales

### Additional Roadway and Transportation Experience for the City of Albuquerque

- **Unser Boulevard (NM 335) Improvements** – Andrew Varoz, Project Manager; (505) 768-3679; 2016; \$3.7 Million (Bid). This project involved the

widening of Unser Boulevard to accommodate the incorporation of bike lanes, construction of new pedestrian sidewalks, construction of multi-use paths, and traffic signal improvements. Construction was completed in the spring of 2016.

- **Sunport Subsidized Roads Repair and Girard Blvd. Rehabilitation** – Sterling Mahan; 244-7728; 2008, 2010, and 2012; \$530,000 for two projects. Prepared construction documents for the removal of trash from under the roadway on South Yale, George Road, and Girard Blvd. Decay and consolidation of the underlying trash had caused significant subsidence in these roads. At South Yale and Girard, Molzen Corbin assisted with procuring construction through on-call contracts with COA Street Maintenance and the Albuquerque Bernalillo County Water Utility Authority. Also included were landfill characterization studies and landfill excavation plans.
- **Atrisco Vista Blvd. Reconstruction (Double Eagle II Airport Access Rd)** – Jim Hinde (Retired), 244-7805, 2015, \$6,118,000. The project included the corridor study, environmental assessment, design, and construction phase services for the construction of approximately 6.5 miles of roadway connecting Interstate 25 to DEII. The new roadway alignment was set within existing right of way and replaced the existing failing roadway. The existing roadway was maintained for traffic while the new pavement section was constructed. The roadbed for the old roadway was maintained for the addition of two lanes in the future. New bike lanes and shoulders were constructed as part of the project.
- **Double Eagle II Access Road Alignment Relocation** – Sterling Mahan, 244-7738, 2009, \$962,628. Emergency project realigned Paseo del Volcan at the entrance to DEII. In four months, a FONSI was obtained, and design and construction were completed.



## Drainage & Site Development (Hydrology)

Molzen Corbin offers full capabilities in drainage design and site development. Our project team members have worked with the City of Albuquerque, NMDOT, AMAFCA, and Soil Conservation Service, among other entities. Our project experience includes drainage master plans, new drainage systems, flood control structures, and extensions to existing systems in conjunction with road design and site development projects (see Figure 5).

### Airfield Center of Excellence (ACE), City of Albuquerque

#### Relevance to this Contract

- Traffic studies
- Multi-modal planning
- Storm drain improvements
- Site planning
- Utility, roadway, and landscape improvements

Molzen Corbin provided planning, design, and engineering services for the development of this 80-acre commercial and light industrial business park located on the City of Albuquerque's Aviation Department property formerly used as a runway.

- **Site Planning/Development** – The site plan for development consisted of the planning document, layout and boundaries, conceptual lot geometry, traffic impact study, and design standards. The project also included approval for access to the site from Gibson Blvd., including a right-in/right-out and left-in traffic movements from the Mid-Rio Grande Council of Government's Access Control Committee. Part of gaining the access from Gibson involved coordination and collaboration with the Greater Albuquerque Bicycle Advisory Committee (GABAC).

**Figure 5. Molzen Corbin's project experience encompasses nearly every facet of storm drainage.**

	Drainage Master Plan	Hydrologic Analysis	Storm Sewer Systems	Open Channels	Detention/Retention Facilities	Special Structures	Cross Drainage Structures	Drainage Reports/Studies	Drainage Development Reviews
<b>City of Albuquerque</b>	■	■	■	■	■	■	■	■	■
Albuquerque International Sunport	■	■	■	■	■	■	■	■	■
AMAFCA	■	■	■	■	■	■	■	■	■
City of Belén	■	■	■	■	■	■	■	■	■
Bernalillo County	■	■	■	■	■	■	■	■	■
Town of Bernalillo	■	■	■	■	■	■	■	■	■
City of Las Cruces	■	■	■	■	■	■	■	■	■
City of Las Vegas	■	■	■	■	■	■	■	■	■
Double Eagle II Airport	■	■	■	■	■	■	■	■	■
Farmington/Four Corners Reg. Airport	■	■	■	■	■	■	■	■	■
Village of Los Lunas	■	■	■	■	■	■	■	■	■
City of Moriarty	■	■	■	■	■	■	■	■	■
New Mexico DOT	■	■	■	■	■	■	■	■	■
New Mexico State University	■	■	■	■	■	■	■	■	■
Sandoval County	■	■	■	■	■	■	■	■	■
Village of Tijeras	■	■	■	■	■	■	■	■	■

- **Drainage/Site Development** – Designed demolition of the existing airfield pavements, and designed roadway, sanitary sewer, water, grading and drainage, landscape and irrigation, and street lighting and storm drainage improvements. The improvements included work on Gibson Blvd., Girard Blvd., ACE interior roadways, and utilities extensions.

**Contact:** Jim Hinde (Retired), (505) 244-7805 | **Year:** 2016 | **Cost:** \$6,373,466 | **Key Staff:** Provine, Morrow, Freier, Salazar, Pate, Gonzales



## Goff Road, Bernalillo County

### Relevance to this Contract

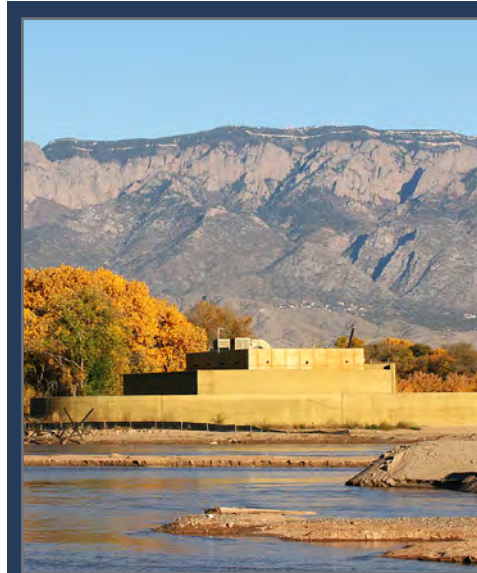
- ADA accommodations
- Multi-modal accommodations
- Innovative intersection design
- Storm Drainage

Goff Boulevard, between Bridge Boulevard and Arenal Road in Southwest Albuquerque, is a major thoroughfare through the City's South Valley. However, the road was located in a flood zone and heavy rain often caused traffic problems and damage to the road surface. The County also wanted to improve safety at a three-way stop at the intersection of Goff and Sunset Road.

Molzen Corbin met this goal by implementing a High T design concept to replace the previous three-way stop at Goff and Sunset. This design allows traffic to move through the signalized intersection on Goff without stopping, while traffic turning onto either Sunset or Goff does so via dedicated lanes at the traffic signal. This design greatly reduces the angle crashes that cause the most severe injuries. Goff Boulevard was also converted from two lanes to three, with fully compliant ADA access for bicycles and pedestrians.

To address the flooding issues, Molzen Corbin designed new storm drains along Goff, requiring high-level SWMM computer modeling to track normal water flows. An important design goal was to keep heavy rains off the roadway without allowing water to drain onto private property abutting Goff. Molzen Corbin used a unique design for the curb cuts along Goff to keep driveways steep enough to drain properly, yet level enough to maintain ADA compliance along the new sidewalks.

This project involved a complex storm drain installation, coordination with many property owners along the street, and coordination with several utilities, as it



*Molzen Corbin provided site planning and architectural design of the San Juan-Chama Alameda Non-Potable Diversion Facility (in the ecologically sensitive Rio Grande bosque) for the City of Albuquerque.*

required the relocation of power, water, sewer, cable, and telephone lines.

**Contact:** Rodrigo Eichwald, 505-848-1574 | **Year:** 2014 | **Cost:** \$4,988,421 | **Key Staff:** Eades, Ashbacher, Bailey, Pate, Gonzales

### Additional Drainage and Site Development Experience for the City of Albuquerque

- **Sunport Drainage Outfall Improvements and Erosion Control** – Sterling Mahan, 244-7738, 2009 and 2010, \$235,000 (est). Designed and prepared construction plans for use by a Storm Drain Maintenance Department on-call contractor to install grading and erosion control improvements at two of the Sunport's major outfalls. Included structure installation and stilling basin construction. One location also required replacement of an energy dissipater structure that had separated from the discharge piping.
- **Albuquerque International Sunport Drainage Management Plan** – Jim Hinde (Retired), 244-



*The Goff Boulevard Improvements project consisted of roadway and storm drainage improvements for Bernalillo County.*



7805, 1994 and 1999, Cost N/A. Prepared the original drainage management plan in 1994 and the update with the Rent-a-Car facility in 1999. This document encompasses the Sunport's drainage area and a portion of KAFB. Recommended improvements were constructed in the major airfield renovation projects in the 1990s, the Rent-a-Car Facility in 1999, and the Terminal Apron Reconstruction Phase I project in 2009.

- **Double Eagle II Airport Aerospace Technology Park Infrastructure** – Sterling Mahan, 244-7738, 2008, \$2,450,000. Storm drainage, water, and sanitary sewer facilities were extended into the Aerospace Technology Park at DEII. Project was accomplished on a fast-track schedule to meet contractual obligations to Eclipse Aviation.

### Architecture/Landscape Architecture (Trails, Bicycle Facilities, ADA Access)

Molzen Corbin's Architecture Department offers decades of experience designing realistic and functional, yet attractive facilities for New Mexico's public entities. Our civil engineers work closely with our in-house Architectural Department on many different trail projects that provide enhanced ADA facilities and multi-use trails, as well as bicycle and equestrian facilities. Many of our projects include trail facilities, and we are experienced in working with neighborhood groups and citizens for feedback on the type and location of such improvements.

### Cesar Chavez Median Reconfiguration, City of Albuquerque

#### Relevance to this Contract

- Streetscape beautification
- Pedestrian improvements

Following our completion of the PIT renovation, the City of Albuquerque hired Molzen Corbin to complete this expedited project in which the City wanted University Boulevard and Cesar Chavez to be beautified to harmonize with the PIT's landscaping. The City appointed a special Projects Manager through the Department of Municipal Development to manage the project. Molzen Corbin developed a median design that enhances motorists' access to the PIT and to the football field, while at the same time providing landscaped pedestrian refuges. This project was successful, and to the public the construction of the medians appeared to be a seamless outgrowth of the PIT renovation.

**Contact:** Colleen Frenz, City of Albuquerque, (505) 768-3826  
**| Year:** 2010 **| Cost:** \$85,000 **| Key Staff:** Pate, Eades, Gonzales



Medians & Landscaping, UNM PIT (Cesar Chavez)

### Sunport Boulevard Landscaping, City of Albuquerque

#### Relevance to this Contract

- Streetscape beautification
- Pedestrian improvements
- Stakeholder collaboration

Sunport Boulevard serves as the primary gateway for people travelling in and out of the Albuquerque International Sunport, providing visitors with their first impressions of the City. In the late 1990s Molzen Corbin designed a landscape for this very high-profile roadway which is attractive, easy to maintain, and water-wise.

We used a mix of native and non-native species to create this landscape. To give the landscape a layered look, we planted low, green rosemary prostrata in the foreground, red barberry in the middle, and gray chamisa, which has masses of yellow flowers in the fall, in the background. Accent, both for color and form, is provided by New Mexico olive and smoke tree. We also planted winter creeper, which cascades from unique, sectioned planters on the side walls. Russian olive was planted in a gentle S-curve to create the impression of crossing a stream bed.

We worked closely with the community, incorporating their input into our final design. The landscape was designed to meet Albuquerque's water conservation

ordinance without sacrificing beauty. The design artfully incorporated all the needs of a roadway including signage, barrier rails, and drainage.

Currently, our architecture and civil departments are overseeing construction of a complete new signing and way finding project on Sunport Blvd from I-25 to the Sunport.

**Contact:** Jim Hinde (Retired), (505) 244-7700 | **Year:** 2011 | **Cost:** Approx. \$2.5 Million | **Key Staff:** Provine, Pate, Gonzales

## Courthouse Road Improvements, Village of Los Lunas

### Relevance to this Contract

- Upgraded Streetscape
- Pedestrian Amenities
- Xeriscape
- Irrigation Design
- Transportation Coordination
- Utility Coordination

Under our on-call contract with the Village of Los Lunas, Molzen Corbin assisted the Village with improvements to one-half mile of Courthouse Road from NM 314 to Los Lentes Road. The purpose of this project was to beautify the corridor (giving it a boulevard-type atmosphere) and promote economic activity. Safety for bicyclists and pedestrians was also one of the Village's concerns, so Molzen Corbin designed enhancements of the existing sidewalks and restriped the road to accommodate these alternate modes of transportation.

Major improvements included:

- Resurfacing pavement to increase road's lifespan
- Restriping the roadway to accommodate bike access from the New Mexico Rail Runner Express area to Los Lentes Road, installing "sharrows" (share-the-road arrows) on the asphalt, and installing "Share the Road" signs to make all of Courthouse Road bicycle and pedestrian-friendly
- Widening the sidewalks to 10 feet (to accommodate pedestrian traffic and comply with the ADA) and extending them
- Removing unnecessary/unusable driveways
- Enhancing the existing drainage pond at Los Lentes Road/Courthouse Road (fencing/landscaping)
- Adding on-street parking by widening the road to discourage drivers from parking on side streets (blocking residential and business entries)
- Adding landscaping to provide shade for pedestrians and bicyclists. The palette is consistent with the accepted concepts from the Los Lunas Rail Runner Express Station Area Plan (2008)

Construction for the project began in November 2014 and was completed in February 2015. It cost \$950,000, of which \$775,000 was funded by FHWA



*Molzen Corbin provided corridor enhancements and improved bicyclist safety for the Village of Los Lunas.*

Small Urban Funds. To coordinate improvements, Molzen Corbin went door-to-door speaking with residents.

**Contact:** Village of Los Lunas, Michael Jaramillo, Public Works Director, (505) 975-9131 | **Year:** 2015 | **Cost:** \$950,000 | **Key Staff:** Eades, Ashbacher, Bailey, Pate, Gonzales

## Project Manager's Experience with the City within the Past Five Years

Molzen Corbin's proposed management team of Kevin Eades, Mike Provine, and Jay Ashbacher have more than 31 years of experience supporting the City.

- **Principal-in-Charge: Kevin Eades, PE** — Mr. Eades has a long working relationship with the City and offers strong project-management and client-relations experience. As Molzen Corbin Executive Vice President, he will ensure the necessary resources are available to provide rapid, efficient support on this contract. Mr. Eades has recently served as a project manager on the City's Unser Boulevard (NM 335) Improvements Project (2016) and West Central Avenue Improvements Project (2018).
- **QA/QC: Mike Provine, PE** — As project manager for the City's Aviation Department for over 31 years, Mr. Provine offers unparalleled knowledge and experience with City facilities, processes, and procedures. Because he is not a member of the design team, he will provide an unbiased perspective during the quality assurance and quality control processes. He has recently managed the City's ACE Infrastructure Improvements Project (2018) and the Sunport Taxiway E Reconstruction, Phase A and B, Project (2019–2020).
- **Project Manager: Jay Ashbacher, PE** — Mr. Ashbacher has six years of experience with Molzen Corbin, as well as two years with the City's Transportation Department. His recent experience with City projects includes the Sunport Traffic Sign Rehabilitation (2017), Unser Boulevard (NM 335) Improvements Project (2016), and West Central Avenue Improvements Project (2018).





## Understanding of the Project Scope

Molzen Corbin pioneered the use of on-call engineering agreements in the 1980s. Today, on-call and retainer agreements remain at the heart of our business. We are specifically organized and staffed to provide responsive on-call services to clients throughout the Southwest. Over decades of experience, we have honed a service model that focuses on continuous improvement and on delivering value with every task and conversation. We currently hold on-call contracts with 30 public entities.

We understand that the broad scope of services involved in the on-call includes providing traditional engineering services on an as-needed and/or fast-response basis. For this contract with the City of Albuquerque, such engineering and professional services projects may involve transportation, storm drainage, public outreach, street/landscape design, traffic engineering, hydrology, bicycle facility design, and construction management. Molzen Corbin has the depth of staff and expertise to provide all these services in-house. We are specifically organized and staffed to provide rapid response to the day-to-day needs of our clients.

**Molzen Corbin is not only familiar with the nature of the on-call contract and the wide variety of services that may arise from the contract, but we are also familiar with the City of Albuquerque having held an on-call contract with the City of Albuquerque Aviation Department for 31 years and recently completed several roadway projects in the community, including the West Central Avenue and Unser Boulevard Improvements.**

## Plan to Perform Services

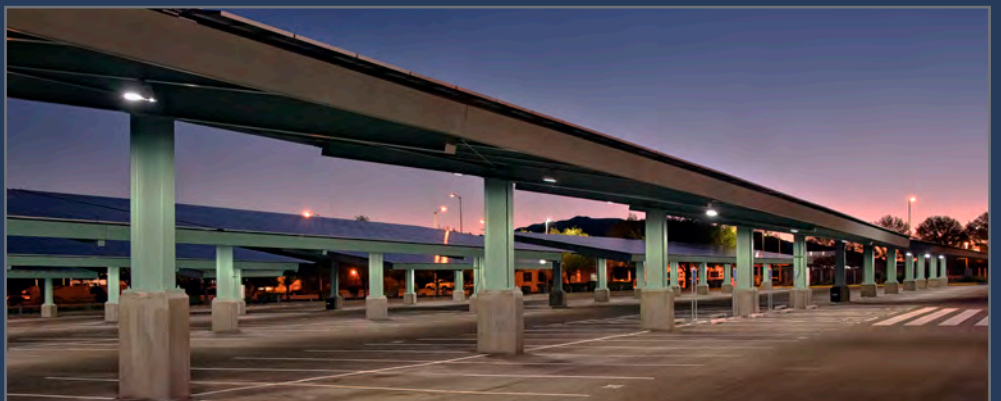
Molzen Corbin has 60 years of experience designing roadway and drainage projects in New Mexico and has worked specifically with City on roadways such as Sunport Boulevard, West Central Avenue, and Unser Boulevard. As a result, we have a thorough working knowledge of City standards, processes, and procedures. Our specific work plan for each task will vary according to the needs of the project, but the overall management of the task will contain the reliability that the City has come to expect from Molzen Corbin.

## Administrative Approach

We know that the key to any good relationship is to provide outstanding service at a reasonable cost, and we have honed our delivery model to ensure that every task, project, and conversation delivers value to our clients. We will provide on-call services to the City in the following manner.

- **We Provide a Highly Knowledgeable Management Team.** We have selected Mr. Ashbacher as our Project Manager for this contract. He has six years of experience supporting on-call municipal engineering projects with Molzen Corbin, **as well as two years with the City of Albuquerque Transportation Department.** He will serve as the primary point of contact for the City and will oversee the coordination and direction of engineering and architectural services. He will also be responsible for in-house coordination and prioritizing with Molzen Corbin's department leaders. Mr. Ashbacher has served as project manager and lead engi-

*Molzen Corbin designed and oversaw construction of the award-winning canopy-mounted, 1 Megawatt solar photovoltaic system in the long-term parking lot at the Albuquerque International Sunport.*



neer for our on-call contracts with Valencia County, City of Belen, Town of Peralta, and Villages of Los Lunas and Tijeras for the past two years.

Mr. Ashbacher will be supported in his role of Project Manager by Mr. Kevin Eades, PE, our Principal-in-Charge. Mr. Eades is a Molzen Corbin Executive Vice President, and he has extensive experience with the City of Albuquerque and with managing “on-call” contracts, including serving as the Technical Services Manager for the Village of Los Lunas, City of Belen, and Town of Bernalillo for more than 24 years.

Together, Mr. Eades and Mr. Ashbacher provide the City with efficient access to our project team, whether the request involves engineering, architecture, grants assistance, or other related matters. However, as the City has experienced in the past, they are always welcome to contact anyone on our staff directly.

- **Formalized project “Kick-Off” meetings.** These will ensure that all the critical success factors are understood and agreed upon by both our design team and City personnel.
- **Communication with Clients/User Input.** Molzen Corbin understands that the success of every project and task we perform hinges on whether it meets the needs and goals of the client. Meeting your needs is only possible with excellent communication. **On every project we consider the client and end users to be integral members of the design team, giving them multiple opportunities to provide their input.** We will also update the City staff on the progress of the project on a regular basis, as well as at project milestones.

### Design Process

At the onset of projects, Molzen Corbin will assemble a scoping team to assist the City in planning and scoping projects. Depending on the project needed, we will include specialists in the fields of roadway, drainage, roadside design, traffic, signage, pave-

ment, lighting, and surveying. Our project team will visit the site, then meet with City officials and maintenance staff to examine the conditions. Molzen Corbin typically uses the following design process:

- **Project Scoping/Programming**—Work with the City to fully define the scope for each project. This may be the most important step in any project. To fully understand your needs, we will work closely with the City in an open exchange of ideas. Using your input, we will develop a project scope that is a full and accurate reflection of your needs and goals.
- **Reports and Studies**—Gather data including on-site measurement, drainage studies, master plans, preliminary engineering reports, utility rate studies, and other pertinent information.
- **Preliminary and Final Design**—Prepare complete working drawings, technical specifications, contract documents for bidding (e.g., bonds, insurance, etc.), quantity take-offs, and cost estimates.
- **Bidding and Negotiation**—Provide assistance in advertising for bids, distributing plans and documents for bidding, receiving and tabulating bids, recommending award, checking bond and insurance forms, and issuing notice to proceed for construction.
- **Construction**—Provide project/construction administration, observers (full-time if required), and inspection services (if desired).
- **Project Closeout**—Prepare drawings for permanent records, including changes. Provide O&M manuals and operator training for treatment plants or electrical system projects.

### Quality Assurance/Quality Control

Quality control (QC) as practiced at Molzen Corbin is a prevention system, not a detection system. A prevention system allows for inspection concurrent with production. This system accomplishes the following:

- Allows for immediate adjustment to changes of design directives



*Torrential rains caused serious erosion and flooding. Runoff escaped an arroyo and flooded several businesses located off the end of the Sunport's Runway 3. Neighbors downstream claimed that the damage was caused by flows originating at the Sunport. Molzen Corbin's analysis proved that the Interstate crossing had not been maintained and was plugged, resulting in ponding storm water. Our quick analysis of the storm flows and library of historical photos, and knowledge of the Sunport's drainage enabled a concise report of the cause of the flooding and eliminated claims.*



- Minimizes errors and costly rework
- Allows for adoption of process improvements

The benefits of this system are:

- Cost savings to the City
- Improved (shortened) schedules

For design projects, Molzen Corbin will make quality expectations clear to team members at the project kickoff meeting. At preliminary and final design completion, plans will move through a three-level quality assurance program:

- **Level I:** Design team will review each plan for quality, accuracy, and adherence to design standards.
- **Level II:** Plans will be reviewed by Mr. Mike Provine, PE. Any plan not meeting quality standards will be returned to the project team for rework.
- **Level III:** Plans that pass Level I and II will undergo an internal, final, in-depth quality review for accuracy, adherence to project requirements, readability, and overall quality by our proposed project manager, Mr. Jay Ashbacher, PE. Any portion of the documents not meeting our strict quality standards will be reworked and re-reviewed.

## Specialized Problem Solving

Having completed hundreds of engineering and architecture projects, we understand that each problem requires a unique approach toward resolution. Molzen Corbin possesses a highly diversified team of skilled engineers, technicians, and construction specialists who are well-suited to tackling engineering challenges. Molzen Corbin has taken a lead in design innovation on transportation and drainage projects throughout New Mexico. Three recent examples of our “thinking outside the box” on projects include the following:

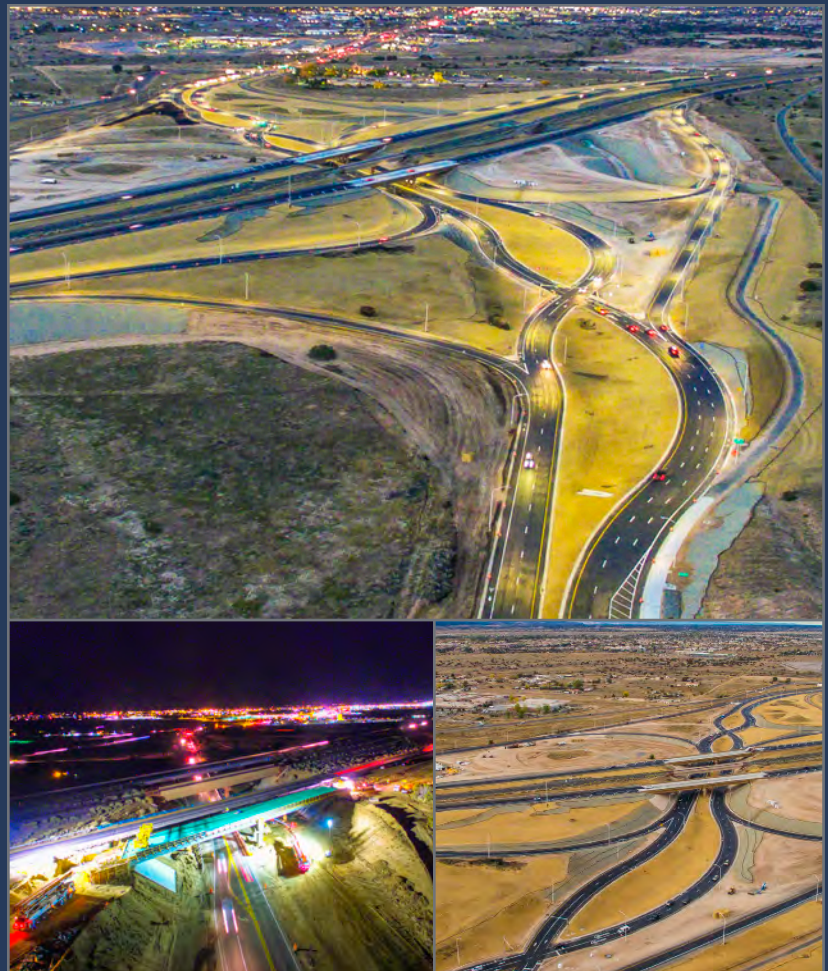
- On the NM 188 (Valley Drive) project in Las Cruces, Molzen Corbin was the first in New Mexico to conduct Virtual web-based online public meetings. We expanded our public participation fivefold and have a public involvement record that may set a new standard for the NMDOT.
- On the I-25/NM 14 (Cerrillos Road) Interchange, Molzen Corbin was the first in New Mexico to design a Diverging Diamond Interchange (DDI) configuration. Molzen Corbin facilitated a development team trip to Salt Lake City, Utah,

to view similar facilities and gain a better appreciation for the implementation of this new interchange. This trip helped to collaborate with other engineers that have accomplished this in other states and to move forward on our DDI design.

- On NM 47 in Peralta, Molzen Corbin was the fifth engineer hired by the NMDOT to help solve the drainage condition in that rural community. We implemented the sustainable pervious concrete pavement as the design solution, which is the first time on any NMDOT project this has been used.

Molzen Corbin embraces innovation and looks for opportunities on each project to integrate better methods, practices, or geometrics into our project-development process. The above “firsts,” just within the past seven years alone, represent our commitment to innovation. Each project brings its own unique challenges and opportunities to integrate innovation, and the City of Albuquerque can be sure that Molzen Corbin will push the envelope on potential innovative design concepts.

*The redesign of the I-25/NM 14 (Cerrillos Road) Diverging Diamond Interchange was an exercise in creativity, and an opportunity for the engineering team to think outside the box of typical roadway design. The finished project – an innovative and improved vehicular interchange with pedestrian/bicycling amenities and the first of its kind in New Mexico – will make traveling safer and more efficient for decades to come.*





## Cost Control and Cost-Estimating Techniques

### A. Cost Control of the Design Process

- Using a computerized project management and cost accounting system (Ajera), we will develop a design fee cost estimate (budget), for each task based on manhours and rates.
- Our cost accounting system automatically generates weekly cost reports. We compare each task's manhours used to the manhours remaining in the budget and the estimated percent complete.
- This proactive approach allows us to identify deviations from the project plan early and make appropriate adjustments to mitigate any impacts on the design costs.

### B. Cost Control of the Construction Cost

- Cost control systems will be set up early in the initial phase of work.
- At the beginning of each task, we will develop the cost estimate using the most current and accurate cost data available.
- During design we will review the cost estimate at any scope change or pricing change. The cost estimate will be reviewed at the weekly design coordination meetings.
- Once the 60% design is completed, we will update the overall project cost estimate, taking into consideration any design changes or cost shifts in the construction industry.
- Changes in the cost estimate will trigger a review in the overall project budget to assess the affect that the change may have on the overall cost.

During the project design, if the project scope will be achieved at a different cost than discussed during negotiations, we will:

- Determine the difference between the original and updated estimates and the reason for it.

- Communicate the cost differences and the probable causes of those differences to the Authority and discuss possible courses of action.
- If budget is exceeded, make recommendations to bring costs in line with the budget or make changes to the project scope or the budget itself. If the project scope can be achieved at a lower cost, we will inform the City.

### C. Cost-Estimating Techniques

The project team will use traditional construction cost estimating, lifecycle costing, value engineering, and constructability reviews to estimate and control project costs. We will use the most recent and applicable cost data available to update the construction cost estimate, such as:

- City of Albuquerque Average Unit Price Listing, NMDOT average unit price listing, Means Cost Data, and others.
- Recent bids on similar projects. Molzen Corbin has compiled construction cost data for similar projects for 60 years. Using similar, recent bids is typically the most accurate way to estimate costs.

The project team will encourage partnering with the construction contractors as a means to minimize costs to the City during construction and to review constructability issues during the design process, if appropriate. Care must be taken when doing this type of review that those contractors do not receive an advantage of prior knowledge during the bidding process.

### Comparison of Bid Award to Cost Estimate

Please see Figure 6 below.

Name of Project	Month and Year Bid	# of Bids	Final Cost Estimate	Bid Award Amount
Carlsbad Double Eagle Phase 3 Water System Improvements	January 2019	4	\$11,062,166	\$11,546,746
Las Cruces Airport Booster Station Renovation*	October 2018	4	\$605,000	\$647,485
Las Cruces Digester Renovation*	September 2018	1	\$275,000	\$295,000
DEll Airport Taxiway A1 and B1 Relocation	July 2018	3	\$1,710,165	\$1,362,020

\*Work done under on-call contract

Figure 6. Molzen Corbin is accustomed to delivering high-quality projects within strict budget constraints.



## Agreement and Insurance Certification

We have reviewed the standard agreement for Engineering or Architectural or Landscape Architectural Services that are required for the project listed below, and hereby certify that we will, if selected for the project, enter into this standard agreement for this project and meet all insurance requirements listed therein.

This Certification is intended for the use of the City of Albuquerque only, in conjunction with the award of the Engineering or Architectural or Landscape Architectural Services Agreement for Project:

Project Name City Wide On-Call Engineering Services for Transportation and Storm Drainage

Project Number 7843, 7844, & 7845

Date May 19, 2020 Firm Name MOLZEN CORBIN

Signature 

Title President and Owner

STATE OF NEW MEXICO )

) ss


COUNTY OF BERNALILLO )

The above Certification was subscribed before me, the undersigned authority, by:

Adelmo Archuleta

who swore upon oath that this Certification was signed of free act and deed, on this

19<sup>th</sup> day of May, 20 20

  
(Notary Public)

My commission expires: 7/6/2021



# Pay Equity Reporting Form PE10-249

## Company name:

Mailing address line 1:

Mailing address line 2:

City, state, zip code:

Phone:

E-mail address:

FEIN number:

EAN number:

SHARE vendor number

Reporting calendar year:

Molzen-Corbin & Associates, Inc.
2701 Miles Rd SE
0
Albuquerque, NM 87106
(505) 242-5700
rrobada@molzencorbin.com
85-0166212
03-7755-2
0
2019

Job Category	No. Females	No. Males	Gap (Absolute %)
1 - Officers and Managers	0	11	N/A
2 - Professionals	4	12	20.65%
3 - Technicians	11	27	11.85%
4 - Sales Workers	0	0	N/A
5 - Office and Admin. Support	11	4	17.04%
6 - Craft Workers (Skilled)	0	0	N/A
7 - Operatives (Semi-Skilled)	0	0	N/A
8 - Laborers (Unskilled)	0	0	N/A
9 - Service Workers	0	0	N/A

Total # Job Categories With No Employees

Total # Female Only Job Categories

Total # Male Only Job Categories

Total # Females (all categories)

Total # Full Time Females

Total # Part Time Females

Total # Males (all categories)

Total # Full Time Males

Total # Part Time Males

Total # Employees

Female % Workforce

Male % Workforce

5

0

1

26

18

8

54

42

12

80

32.50%

67.50%

Document must be signed by the principal executive of the company:

ITB #:

RFP#

PO#

ROBERT P. ROBADA, VP/Sec Robert P. Robada 5-18-20

Name and title, printed

Signature

Date





# CERTIFICATE OF LIABILITY INSURANCE

MOLZE-1

OP ID: EH

DATE (MM/DD/YYYY)

02/06/2020

THIS CERTIFICATE IS ISSUED AS A MATTER OF INFORMATION ONLY AND CONFERS NO RIGHTS UPON THE CERTIFICATE HOLDER. THIS CERTIFICATE DOES NOT AFFIRMATIVELY OR NEGATIVELY AMEND, EXTEND OR ALTER THE COVERAGE AFFORDED BY THE POLICIES BELOW. THIS CERTIFICATE OF INSURANCE DOES NOT CONSTITUTE A CONTRACT BETWEEN THE ISSUING INSURER(S), AUTHORIZED REPRESENTATIVE OR PRODUCER, AND THE CERTIFICATE HOLDER.

IMPORTANT: If the certificate holder is an ADDITIONAL INSURED, the policy(ies) must be endorsed. If SUBROGATION IS WAIVED, subject to the terms and conditions of the policy, certain policies may require an endorsement. A statement on this certificate does not confer rights to the certificate holder in lieu of such endorsement(s).

PRODUCER Professional Liability Insurers, Inc. 6101 Moon St. NE, Suite 1000 Albuquerque, NM 87111 James Lyons	CONTACT NAME: RJ Dean & Associates	
	PHONE (A/C, No, Ext): 505-822-8114 FAX (A/C, No): 505-822-0341	
	E-MAIL ADDRESS: ehughes@cressinsurance.com	
	INSURER(S) AFFORDING COVERAGE	NAIC #
	INSURER A: Donegal Insurance Company	13692
	INSURER B: New Mexico Assurance Co	
	INSURER C: XL Specialty Insurance	33022
	INSURER D:	
	INSURER E:	
	INSURER F:	

## COVERAGES

## CERTIFICATE NUMBER:

## REVISION NUMBER:

THIS IS TO CERTIFY THAT THE POLICIES OF INSURANCE LISTED BELOW HAVE BEEN ISSUED TO THE INSURED NAMED ABOVE FOR THE POLICY PERIOD INDICATED. NOTWITHSTANDING ANY REQUIREMENT, TERM OR CONDITION OF ANY CONTRACT OR OTHER DOCUMENT WITH RESPECT TO WHICH THIS CERTIFICATE MAY BE ISSUED OR MAY PERTAIN, THE INSURANCE AFFORDED BY THE POLICIES DESCRIBED HEREIN IS SUBJECT TO ALL THE TERMS, EXCLUSIONS AND CONDITIONS OF SUCH POLICIES. LIMITS SHOWN MAY HAVE BEEN REDUCED BY PAID CLAIMS.

INSR LTR	TYPE OF INSURANCE	ADDL SUBR INSD WVD	POLICY NUMBER	POLICY EFF (MM/DD/YYYY)	POLICY EXP (MM/DD/YYYY)	LIMITS
A	<input checked="" type="checkbox"/> COMMERCIAL GENERAL LIABILITY <input type="checkbox"/> CLAIMS-MADE <input checked="" type="checkbox"/> OCCUR  GEN'L AGGREGATE LIMIT APPLIES PER: <input type="checkbox"/> POLICY <input checked="" type="checkbox"/> PRO-JECT <input type="checkbox"/> LOC <input type="checkbox"/> OTHER:		BSD9257861	12/31/2019	12/31/2020	EACH OCCURRENCE \$ 1,000,000 DAMAGE TO RENTED PREMISES (Ea occurrence) \$ 500,000 MED EXP (Any one person) \$ 10,000 PERSONAL & ADV INJURY \$ 1,000,000 GENERAL AGGREGATE \$ 2,000,000 PRODUCTS - COMP/OP AGG \$ 2,000,000 \$
A	<input checked="" type="checkbox"/> AUTOMOBILE LIABILITY <input checked="" type="checkbox"/> ANY AUTO <input type="checkbox"/> ALL OWNED AUTOS <input type="checkbox"/> SCHEDULED AUTOS <input type="checkbox"/> HIRED AUTOS <input type="checkbox"/> NON-OWNED AUTOS		CA9257861	12/31/2019	12/31/2020	COMBINED SINGLE LIMIT (Ea accident) \$ 1,000,000 BODILY INJURY (Per person) \$ BODILY INJURY (Per accident) \$ PROPERTY DAMAGE (Per accident) \$ \$
A	<input checked="" type="checkbox"/> UMBRELLA LIAB <input checked="" type="checkbox"/> OCCUR <input type="checkbox"/> EXCESS LIAB <input type="checkbox"/> CLAIMS-MADE <input type="checkbox"/> DED <input checked="" type="checkbox"/> RETENTION \$ 10000		CXL9257861	12/31/2019	12/31/2020	EACH OCCURRENCE \$ 4,000,000 AGGREGATE \$ 4,000,000 \$
B	WORKERS COMPENSATION AND EMPLOYERS' LIABILITY ANY PROPRIETOR/PARTNER/EXECUTIVE OFFICER/MEMBER EXCLUDED? (Mandatory in NH) If yes, describe under DESCRIPTION OF OPERATIONS below	Y/N <input type="checkbox"/> N/A	64411.112	01/01/2020	01/01/2021	<input checked="" type="checkbox"/> PER STATUTE <input type="checkbox"/> OTH-ER E.I. EACH ACCIDENT \$ 1,000,000 E.I. DISEASE - EA EMPLOYEE \$ 1,000,000 E.I. DISEASE - POLICY LIMIT \$ 1,000,000
B	Professional Liab		DPR9953150	12/31/2019	12/31/2020	Ea Claim 2,000,000 Aggregate 6,000,000

DESCRIPTION OF OPERATIONS / LOCATIONS / VEHICLES (ACORD 101, Additional Remarks Schedule, may be attached if more space is required)

## CERTIFICATE HOLDER

## CANCELLATION

FOR PROPOSAL ONLY

SHOULD ANY OF THE ABOVE DESCRIBED POLICIES BE CANCELLED BEFORE THE EXPIRATION DATE THEREOF, NOTICE WILL BE DELIVERED IN ACCORDANCE WITH THE POLICY PROVISIONS.

AUTHORIZED REPRESENTATIVE

© 1988-2014 ACORD CORPORATION. All rights reserved.