



EC-20-141
CITY OF ALBUQUERQUE

Albuquerque, New Mexico
Office of the Mayor

Timothy M. Keller, Mayor

INTER-OFFICE MEMORANDUM

DATE: August 20, 2020

TO: Patrick Davis, President, City Council
FROM: Timothy M. Keller, Mayor *TK*
SUBJECT: Mayor's Recommendation of Wood for Engineering Consultants for City Wide On-Call Geotechnical Services

The Selection Advisory Committee (SAC) originally had its meeting scheduled for August 18,, 2020 to consider the following project, but due to VPN access issues, the results of the meeting were not broadcast until August 20, 2020.

Project: Project No: 5637.00; Engineering Consultants for City Wide On-Call Geotechnical Services

Agency: Department of Municipal Development

Six proposals were received in response to the Request for Proposals but only four were considered because two of the firms did not include all of the required paperwork in their proposals as required per the legal ad.

Project Description: Environmental assessments related to geo-technical site assessments; pre-design geo-technical testing; soil, aggregate, concrete, cement and asphalt sampling and testing; soil boring and analysis; concrete coring and cylinder testing; special inspections during construction as required; and soils construction testing (density, moisture, etc.).

The Committee made the following recommendation of the three highest ranked respondents:

Terracon Consultants, Inc.

Wood

YeDoma Consultants, LLC

The Cover Analysis, Score-Sheet Compilation and Minutes of the SAC Meeting are attached.

Therefore, in accordance with Section 14-7-2-1 et seq, ROA 1994, the following is my consultant selection recommendation concerning the procurement of professional services for the above listed project:

Wood

W0003
Mayor's Recommendation of Wood for Project No: 5637.00; Engineering Consultants for City
Wide On-Call Geotechnical Services

This recommendation is being forwarded for Council consideration and action.

DS
Ed

Approved:

SML 8/31/20
Saritá Nair, JD, MCRP Date
Chief Administrative Officer

Approved as to Legal Form:

DocuSigned by:

Esteban Aguilar
7961D99D046F4DB...

8/21/2020 | 11:50 AM MT

Esteban A. Aguilar, Jr. Date
City Attorney

Recommended:

DocuSigned by:

Patrick Montoya AV
1ED93102F75A41F...

Patrick Montoya, Director Date
Department of Municipal Development

8/21/2020 | 8:52 AM PDT

MIM

Attachments:

Cover Analysis
Composite SAC Evaluation Form
Minutes of the SAC Meeting

Cover Analysis

1. What is it?

This is an engineering agreement with a professional engineering firm for City-wide geotechnical analysis and testing services, and soils reports services.

2. What will this piece of legislation do?

This piece of legislation will provide a professional agreement for all City Departments to use.

3. Why is this project needed?

This project is needed so that a contract will be in place for acquisition analysis, design development and construction work.

4. How much will it cost and what is the funding source?

The cost of this agreement is \$500,000.00 plus NMGR, and the funding source will be per project as this is City-wide.

5. Is there a revenue source associated with this contract? If so, what level of income is projected?

Potentially there is a revenue source associated with this contract if it is used to assist with ROW acquisition or real property acquisition.

6. What will happen if the project is not approved?

If this project is not all approved, all City Departments will have to find an existing engineering contract, direct that firm to obtain a proposal from a qualified geo technical engineering firm, mark up that proposal and then obtain an NTP.

7. Is this service already provided by another entity?

No

Composite Selection Advisory Committee Evaluation Form

Project No: 5637.00; Engineering Consultants for City Wide On-Call Geotechnical Services

DATE: 8/18/2020

| Evaluation Criteria | Maximum Points | Firm Name | Firm Name | Firm Name |
|----------------------------------------------------------------------------------------------------------------------------------------------------------------------------------------------------------------------------------------------------------------------------------------------------------------------------------------------------------------------------------------------------------------------------------------------------|----------------|------------|----------------------------|-------------------------|
| | | Wood | Terracon Consultants, Inc. | YeDoma Consultants, LLC |
| I. General Information 1. Provide Name and Address of Respondent and, if firm, when firm was established. 2. Provide number of employees, technical discipline and registration. 3. Indicate where the services are to be performed. | 25 | 24 | 23 | 23 |
| II. Project Team Members 1. Provide organization plan for management of the project. 2. Identify all consultants to be used on the project. 3. Provide qualifications of project team members shown in organization plan, including registration and membership in professional organizations. 4. Provide any unique knowledge of key team members relevant to the project. | 75 | 73 | 65 | 67 |
| III. Respondent Experience 1. Describe previous projects of a similar nature, including client contact (with phone numbers), year services provided, construction cost (if applicable), and a narrative description of how they relate to this project. 2. Provide examples of the Project Manager's City experience within the past five (5) years that serve to demonstrate the the Project Manager's knowledge of City procedures. | 125 | 111 | 110 | 110 |
| IV. Technical Approach 1. Describe respondent's understanding of the project scope. 2. Describe how respondent plans to perform the services required by the project scope. 3. Describe specialized problem solving required in any phase of the project. | 150 | 133 | 133 | 128 |
| V. Cost Control 1. Describe cost control and cost estimating techniques to be used for this project. 2. Provide comparisons of bid award amount to final cost estimate for projects designed by the respondent during the past two (2) years. The consultant may provide justification for any discrepancies that may exist with this information. | 75 | 61 | 58 | 59 |
| VI. Quality and Content of Proposal 1. Evaluator's rating of overall quality of proposal. | 50 | 43 | 46 | 43 |
| Total Possible Points | 500 | 500 | 500 | 500 |
| Total Points (Before Point Deductions) | | 445 | 435 | 430 |
| Minus High and Low Scores Total | | 178 | 174 | 171 |
| Total Points (Minus High and Low Scores) | | 267 | 261 | 259 |
| Minus Point Deductions (If Applicable) | | 0 | 0 | 0 |
| Sub-Total (All Applicable Deductions Applied) | | 267 | 261 | 259 |
| Plus Tie Breaker Points (If Applicable) | | 0 | 0 | 0 |
| SAC TOTAL SCORES | | 267 | 261 | 259 |
| Plus Interview Scores | | 0 | 0 | 0 |
| FINAL SCORES | | 267 | 261 | 259 |

Minutes of the Meeting
of the
Selection Advisory Committee
August 20, 2020

via Email

Engineering Consultants for City Wide On-Call Geotechnical Services

Project No: 5637.00

Present:

Marisa Ortiz, Project Manager, Aviation Department
Tim Brown, PE, Department of Municipal Development
Savannah Torres, PE, Department of Municipal Development
Bryan Wolfe, PE, Department of Municipal Development
Ray Johnson, Cultural Services

Staff:

Myrna Marquez, Administrator, Selection Advisory Committee

Six proposals were received in response to the Request for Proposals but only four were considered because two of the proposal were missing documents as required per the legal ad.

Project Description:

Environmental assessments related to geo-technical site assessments; pre-design geo-technical testing; soil, aggregate, concrete, cement and asphalt sampling and testing; soil boring and analysis; concrete coring and cylinder testing; special inspections during construction as required; and soils construction testing (density, moisture, etc.).

Estimated Compensation \$ 500,000.00

The Administrator contacted the SAC Committee and RFP respondents on August 13, 2020 and advised them that this meeting would take place via email. She reminded the SAC Committee to have their scores and comments emailed to her by 11:00am on August 18, 2020.

The SAC Committee was appreciative of all the submission for this project and the Administrator collected the Committee members' scores. Upon receipt of all the score sheets, the Administrator deleted the high scores and low scores and then totaled the proposal scores. Ties did not result but because the two top scores were within 5% (15 points) of each other, point deductions were applied. The Committee and respondents were advised of the final scores and the Administrator asked the Committee if there was a motion for interviews; no motion was made. The Administrator verified the scores prior to submitting the Committee's recommendation to the Mayor.

Final scores reported via the email meeting were as follows:

| | |
|----------------------------|-----|
| Bohannon Huston Inc. | 246 |
| Terracon Consultants, Inc. | 261 |
| Wood | 267 |
| YeDoma Consultants LLC. | 259 |

The Administrator informed the Committee of the following ranking of the top three firms based on their scores and subject to verification of Total Final Points:

| | |
|----------------------------|-----|
| Terracon Consultants, Inc. | 261 |
| Wood | 267 |
| YeDoma Consultants LLC. | 259 |

There being no further business before the Committee, the Administrator adjourned the email meeting by emailing everyone the final scores on August 20, 2020 at 1:48p.m.

Myrna Márquez

Myrna Marquez, Administrator
Selection Advisory Committee

cc: City Clerk



wood.

City Wide On-Call Geotechnical Services Project No: 5637.00

Prepared for:
City of Albuquerque
600 2nd Street NW
Albuquerque, NM 87102

August 5, 2020



PROPOSAL



Letter of Interest

August 5, 2020

Marisa Ortiz, City Project Manager
City of Albuquerque
600 2nd Street NW
Albuquerque, NM 87102

Wood Environment & Infrastructure Solutions, Inc.
8519 Jefferson Street NE
Albuquerque, New Mexico 87113
T: (505) 821-1801
F: (505) 821-7371
www.woodplc.com

RE: Citywide On-Call Geotechnical Services, Project No: 5637.00

Dear Ms. Ortiz:

The City of Albuquerque (City) has been utilizing material and geotechnical testing services on an as-needed basis for a variety of projects including new construction, renovations, and deficiency corrections. Wood Environment & Infrastructure Solutions, Inc. (Wood) has a team of experts ready and immediately available to assist the City in delivery of any assigned project under this important on-call contract.

Wood's Albuquerque office has been providing these same material and geotechnical testing services to City directly for and as a subconsultant to various architects and contractors for over 45 years with a long, history of delivering successful projects on-time and within budget. Our designated team not only has the necessary experience to provide high-quality material and geotechnical testing solutions but also has a thorough understanding of specific City requirements, protocols, and expectations. From planning to completion, we will tailor our solutions to meet your expectations and project goals.

In addition, Wood is the largest material and geotechnical engineering testing and inspection firm in New Mexico in addition to having approximately 70 professional, technical, and field personnel including special inspectors. We are capable of providing a full suite of tests in compliance with American Association of State Highway and Transportation Officials (AASHTO), American Society for Testing Materials (ASTM), and/or New Mexico Department of Transportation (NMDOT) standards with all testing performed by certified technicians.

Wood is committed to providing the senior and supporting staff necessary to perform the services requested under this contract. We look forward to the opportunity of continuing our long-term relationship with the City.

Respectfully Submitted,

Wood Environment & Infrastructure Solutions, Inc.

A handwritten signature in blue ink, reading "Daniel A. Kwiecinski".

Daniel A. Kwiecinski, PE
Principal Engineer/NM Operations Manager
dan.kwiecinski@woodplc.com

A handwritten signature in blue ink, reading "Carlo Evangelisti".

Carlo Evangelisti, PE
Geotechnical Services Project Manager
carlo.evangelisti@woodplc.com





Table of Contents

| | |
|----------------------------------------------------------------------------------------------------------------------------------------------|-----------|
| Table of Contents | i |
| I. General Information | 1 |
| Certified Professionals..... | 3 |
| Specific Technical Experience..... | 3 |
| Geotechnical Engineering Services | 4 |
| Material Testing Services..... | 5 |
| Environmental Site Assessments..... | 5 |
| II. Project Team Members | 6 |
| Carlo Evangelisti, PE – Geotechnical Services Project Manager | 6 |
| Dan Kwiecinski, PE – Project Principal..... | 7 |
| John Lommler, PhD, PE, DGE – Geotechnical Engineering Quality Assurance Manager | 7 |
| Ken Wylie, PE – Materials Engineering Quality Assurance Manager | 7 |
| Hugo Carreon, SET – Materials Testing Project Manager | 7 |
| Brandi Butts, PE – Geotechnical Engineer | 8 |
| Joe Cordova, NICET – Field Supervisor..... | 8 |
| Jesse Boam, PE – Laboratory Supervisor | 8 |
| Lucas Giron, PE – Materials Engineer | 8 |
| Jamir Tarin, ICC – Lead Special Inspector | 9 |
| Jesus Caro, CWI – Certified Welding Inspector..... | 9 |
| III. Respondent Experience..... | 9 |
| Albuquerque Public Schools On-Call Material, Geotechnical Testing, and Special Inspection Services, Albuquerque, NM..... | 9 |
| Albuquerque Metropolitan Arroyo Flood Control Authority On-Call Material, Geotechnical, and Material Testing Services, Albuquerque, NM | 10 |
| Sandia National Laboratories Geotechnical, Construction Materials Testing, and Special Inspection Services, Albuquerque, NM..... | 10 |
| Ability to Perform Geotechnical, Soil, and Construction Material Services | 10 |
| Ability to Meet Geotechnical and Quality Control Testing Service Expectations..... | 10 |
| Examples and Approach to Satisfying Requirements..... | 11 |
| Testing Experience and Competence..... | 12 |
| Past Performance/Project History | 12 |
| Related Experience/References | 12 |
| IV. Technical Approach..... | 13 |
| Approach to Geotechnical, Soil, and Construction Material Services | 13 |
| Methodologies..... | 13 |
| Quality Assurance..... | 14 |
| Strategies | 14 |
| Quality Management..... | 15 |
| V. Cost Control..... | 15 |



I. General Information

Geotechnical and Quality Control Testing are a core market sector for Wood Environment & Infrastructure Solutions, Inc. (Wood), as demonstrated by the nationally recognized prominence of many of Wood's professionals. Our highest priority is to provide our clients with cost-effective solutions for designing engineered structures in varied geologic settings. Across the region, we have conducted thousands of geotechnical engineering, materials testing, and special inspections for federal, state, and county governments, irrigation and power authorities, tribal nations, large corporations, and small businesses. Wood has been providing these services for over 45 years in the state of New Mexico (NM), and we employ many respected and highly experienced professionals with the capabilities to successfully perform the required tasks under this contract.



We are able to draw on an experienced local footprint with a wide geographical reach to support our client's needs. We are committed to providing solutions to improve our client's operations, reduce environmental liability, and increase efficiencies. From planning and design to construction, operations and restoration, we deliver solutions that reflect an understanding of your bigger picture. We are dedicated to consistently delivering technical excellence, innovative problem-solving, and smart application of technology.

| Geotechnical Services Personnel | Registration Number | Years of Experience | Project Management | Geotechnical Investigation & Assessment | Soils Testing & Analysis | Geophysical Investigation & Characterization | Dams, Levees & Hydrogeological Modeling | Geological Engineering | Rock Slope Characterization | Rockfall Hazard Assessment | Geotechnical Engineering Analyses & Reporting | Plans, Specifications & Engineering Estimates | Construction Site Inspections & Geotechnical Oversight | Materials Engineering, QA/QC Testing & Analysis |
|---------------------------------|---------------------|---------------------|--------------------|-----------------------------------------|--------------------------|----------------------------------------------|-----------------------------------------|------------------------|-----------------------------|----------------------------|-----------------------------------------------|-----------------------------------------------|--------------------------------------------------------|-------------------------------------------------|
| Dan Kwiecinski, PE | 13496 | 35 | ✓ | | | ✓ | | ✓ | | | | ✓ | | |
| John Lommler, PhD, PE, DGE | 11549 | 50+ | ✓ | ✓ | ✓ | ✓ | ✓ | ✓ | ✓ | ✓ | ✓ | ✓ | ✓ | ✓ |
| Ken Wylie, PE | 7733 | 44 | ✓ | | ✓ | | ✓ | | | | | ✓ | ✓ | ✓ |
| Carlo Evangelisti, PE | 17392 | 19 | ✓ | ✓ | ✓ | ✓ | ✓ | ✓ | ✓ | ✓ | ✓ | ✓ | ✓ | ✓ |
| Brandi Butts, PE | 23284 | 8 | ✓ | ✓ | ✓ | ✓ | ✓ | ✓ | ✓ | ✓ | ✓ | ✓ | ✓ | ✓ |
| Lucas Giron, PE | 22757 | 10 | ✓ | | ✓ | ✓ | | | | | ✓ | ✓ | ✓ | ✓ |
| Azupuri Kaba, EIT | | 6 | | ✓ | ✓ | ✓ | | ✓ | ✓ | ✓ | ✓ | | | |
| Eric Koenig, PG | | 34 | ✓ | ✓ | ✓ | | | ✓ | | | ✓ | ✓ | ✓ | ✓ |
| Carlton Pine | | 19 | | ✓ | ✓ | | | ✓ | | | ✓ | ✓ | ✓ | ✓ |
| David Varela, PE | | 20 | ✓ | ✓ | ✓ | ✓ | ✓ | ✓ | | | ✓ | ✓ | ✓ | ✓ |
| Mark Breitnauer, PE | | 25 | ✓ | ✓ | ✓ | ✓ | ✓ | ✓ | ✓ | ✓ | ✓ | ✓ | ✓ | ✓ |



| Material Services Personnel | Years of Experience | NICET | | | | ACI | | | | NMDOT | | | | ICC | | Nuclear Density Gauge | USACE QCM | AWS/CWI Welding Inspector |
|-----------------------------|---------------------|-------------|---------------|----------------|-------------------------|---------------|-------------|-------------|---------------------------|---------------------|-----------|----------|-------------------|-------|---------|-----------------------|-----------|---------------------------|
| | | Soils Level | Asphalt Level | Concrete Level | Highway or Construction | Level 1 Field | Level 1 Lab | Level 2 Lab | Concrete Strength Testing | Concrete Inspection | Aggregate | Concrete | Asphalt/Superpave | Soils | Masonry | Post Tensioning | | |
| Hugo Carreon, SET | 21 | | | | | ✓ | ✓ | ✓ | ✓ | | | | ✓ | ✓ | | | ✓ | |
| Joe Cordova, NICET | 23 | 3 | 3 | 3 | C | ✓ | | | | ✓ | ✓ | | ✓ | | | | ✓ | |
| Jesse Boam, PE | 15 | | | | | ✓ | ✓ | | ✓ | ✓ | | | | | | | ✓ | |
| Lucas Giron, PE | 10 | | | | | | | | | | | | | | | | ✓ | |
| Jamir Tarin | 18 | | | | | | | | | | ✓ | | ✓ | ✓ | | ✓ | ✓ | |
| Jesus Caro (CWI) | 28 | | | | | | | | | | | | | | | ✓ | | ✓ |
| Arthur Miller | 34 | | | | | ✓ | | | | | | | | | | | ✓ | |
| Carlos Vela | 10 | | | | | ✓ | | | | | | | | | | | ✓ | |
| Carlton Pine | 19 | | | | | ✓ | | | | | | | | | | | ✓ | |
| Chris Wawrin | 23 | | | | | ✓ | ✓ | | | | ✓ | | | | ✓ | ✓ | ✓ | |
| David Padilla | 20 | | | | | ✓ | | | | | ✓ | | ✓ | ✓ | | | ✓ | |
| David Valles | 15 | | | | | ✓ | | | | | | | | | | | ✓ | |
| David Wilson, PE | 35 | | | | | | | | | | | | | | ✓ | ✓ | | |
| Ed Lewis | 35 | | | | | | | | | | | | | | | | ✓ | |
| Edward Gessner | 13 | | | | | ✓ | | | | | | | ✓ | | | | ✓ | |
| Enrico Serrano | 36 | 2 | 2 | 2 | C | ✓ | | | ✓ | | ✓ | | ✓ | ✓ | | | ✓ | ✓ |
| Eric Koenig, PG | 34 | | | | | | | | | | | | | | | | ✓ | |
| Fernando Paredes | 22 | 1 | 1 | 1 | C | ✓ | ✓ | | ✓ | ✓ | ✓ | ✓ | ✓ | ✓ | | ✓ | ✓ | |
| Fred Simpson | 21 | 2 | 2 | 2 | C | | | | | ✓ | | | ✓ | | | | ✓ | |
| Hiram Loya | 10 | | | | | ✓ | | | | | | | | | | | ✓ | |
| Jacob Meyers | 15 | | | | | | ✓ | | ✓ | | ✓ | | | | | | | |
| Janet Greene | 15 | | | | | ✓ | ✓ | | ✓ | | ✓ | | ✓ | ✓ | | | | |
| John Lovato | 1 | | | | | | | | | | | | | | | | ✓ | |
| Jose Garcia | 2 | | | | | | | | | | | | | | | | ✓ | |
| Kenneth Anderson | 15 | | | | | ✓ | | | | | | | | | | | ✓ | |
| Kenneth Hale | 36 | | | | | | | | | | | | | | | | | ✓ |
| Luis Marquez | 8 | | | | | ✓ | | | ✓ | | ✓ | | ✓ | ✓ | | | ✓ | |
| Mark Gallegos | 30 | | | | | ✓ | | | | | ✓ | ✓ | ✓ | ✓ | | | ✓ | |
| Mike Farr, PG | 30 | | | | | | | | | | | | | | ✓ | ✓ | | ✓ |
| Oscar Romero | 14 | | | | | ✓ | ✓ | | ✓ | | ✓ | | ✓ | ✓ | | | ✓ | |



| | | | | | | | | | | | | | | | | | | | |
|------------------|----|--|--|--|--|---|---|--|---|--|---|---|---|---|--|--|---|---|--|
| Pedro Marquez | 15 | | | | | ✓ | | | | | | | | | | | ✓ | | |
| Ronnie Rodriguez | 14 | | | | | ✓ | ✓ | | | | ✓ | | ✓ | ✓ | | | | ✓ | |
| Scott Gandee | 25 | | | | | ✓ | | | ✓ | | ✓ | ✓ | ✓ | ✓ | | | ✓ | | |
| Sergio Marquez | 15 | | | | | ✓ | | | ✓ | | ✓ | ✓ | ✓ | ✓ | | | ✓ | | |
| Steven Dadd | 1 | | | | | | | | | | | | | | | | ✓ | | |
| Tim Burkhard | 40 | | | | | | | | | | | | | | | | ✓ | ✓ | |
| Victor Lara | 10 | | | | | ✓ | | | | | | | | | | | ✓ | | |
| Victor Levario | 10 | | | | | ✓ | | | | | | | | | | | ✓ | | |
| Victor Yanez | 2 | | | | | | | | | | | | | | | | ✓ | | |

Certified Professionals

Wood has approximately 70 local personnel on staff in NM that can fulfill all positions required by the City. We have the largest staff of International Code Council (ICC), American Concrete Institute (ACI), American Welding Society (AWS), and Associated Contractors of New Mexico (ACNM)/New Mexico Department of Transportation (NMDOT) certified technicians in NM along with 13 NM Professional Engineers (PEs). Wood has over 50 Leadership in Energy and Environmental Design (LEED) accredited professionals who have worked on many major LEED projects for private and public-sector clients across the world.

Specific Technical Experience

Wood has extensive experience providing geotechnical, soil, and construction material services to various NM agencies. Our NM operations employs over 70 personnel operating from six permanent offices located in **Albuquerque, Carlsbad, Eunice, Gallup, Las Cruces, and Socorro. This means that 100% of the geotechnical and quality control testing services will be executed by NM offices with the majority of work performed in Albuquerque.** This local full-service expertise brings a streamlined approach to quality assurance in geotechnical, soil, and construction material services. Our proposed local team is built on this foundation and will deliver these same values under the City's contract.

The following key points summarize Wood's technical experience and qualifications for this contract:

- **Familiarity with Similar Projects** – Wood has provided these same services to numerous local, county, and state agencies throughout NM under similar size and scope contracts.
- **Available Resources** – Wood's resources are available and willing to begin work immediately. We possess the personnel, financial capabilities, and equipment necessary to undertake this work and complete it accurately and efficiently. Our diverse skills will also allow the City to supplement their staff as required to meet project objectives.
- **Qualified Staff** – Wood has approximately 70 local personnel on staff in NM that can fulfill all positions required by the City. We have the largest staff of ICC, ACI, AWS, and ACNM/NMDOT certified technicians in NM along with 13 NM PEs.
- **LEED Design** – Wood understands the importance of the City's interest of increasing the energy efficiency and decreasing the negative environmental impact of new and renovated buildings. We have LEED certified professionals and can provide Energy Star Certification. Sustainability must be integral in everything we do as a business in order to be successful and our people are at the heart of what we do. We want Wood to be recognized as a leader in responsible business practices, one that takes its environmental responsibilities seriously by supporting our clients and suppliers in this area. Wood has over 50 LEED accredited professionals who have worked on many major LEED projects for private and public-sector clients across the world.



- **Local Support** – With six offices located in NM, we can draw upon resources from offices within a short commute to provide support for this contract. All services performed under this contract will utilize NM staff.
- **Laboratory Certifications** – Wood’s laboratory maintains certifications from American Association of State Highway and Transportation Officials (AASHTO) re:source and the US Army Corps of Engineers (USACE), the most stringent in the industry. As part of holding these certifications, our laboratory, equipment, quality manual, and procedures are periodically audited and evaluated by AASHTO re:source, Cement and Concrete Reference Laboratory (CCRL), and USACE. Additionally, Wood participates in the AASHTO re:source, CCRL, and NMDOT round robin testing programs, where our test results are compared to the results of other laboratories. Wood also owns and maintains all the necessary equipment to perform our job accurately and efficiently with over \$1M of testing equipment in NM.
- **In-Depth Geotechnical and Construction Quality Expertise** – Wood’s geotechnical and materials engineering groups are among the most respected in NM and provide the in-depth working experience to meet the needs of clients throughout the State. In addition, we have specific equipment and computer modeling capabilities for field investigations, laboratory testing, and analysis that contribute to comprehensive evaluations of subsurface conditions.

Geotechnical Engineering Services

Geotechnical engineering is a core market sector for Wood. Our team of professionals are knowledgeable specialists familiar with complex ground conditions to implement robust testing procedures. Our highest priority is to provide the City with cost-effective solutions regarding geotechnical investigations.

Wood’s geotechnical investigations identify the presence of both horizontally and vertically significant soil, rocks, and groundwater conditions, as well as establish the characteristics of the subsurface materials by sampling and laboratory or in-situ testing. This geotechnical profile and geologic setting characterization of project sites will provide the City with the sufficient detail needed for design and construction projects.

The geologic setting in Albuquerque, from the fluvial deposits in the valley to the volcanic deposits on the west mesa, results in variable soil and rock profiles. Since Wood employs a balanced and knowledgeable geologic and engineering staff, we possess the skills to provide a good understanding of the geotechnical profile in these terrains.

Characterization services may include drilling and sampling in a variety of soil and rock terrains, and both laboratory and field testing. Wood’s NM geotechnical group has the knowledgeable professionals necessary to perform these project tasks in an efficient, professional manner. These services may include auger drilling in soil and core drilling in rock; installation of slope instrumentation, such as inclinometers and piezometers; in unconsolidated material, including rock-fill; and may also be required where potentially unstable ground or shallow groundwater conditions are anticipated.





Material Testing Services

As the largest materials engineering and testing firm in NM, Wood is able to provide on-call and full-time testing and inspection services quickly, with the option of standard and non-standard testing hours. We rigorously train and certify our employees in technical subjects, including ICC Special Inspections, Technical Training and Certification Program (TTCP) sponsored by the New Mexico Highway Department, National Institute for Certification in Engineering Technologies (NICET), and ACI. Our employees are also OSHA 10-hour and 40-hour trained, in order to ensure high quality, safe services. Wood is a proud supporter and leader in the use of new technology, providing state of the art equipment, and highly trained professionals.

Wood has been involved in special inspections and materials testing on projects since its inception over 45 years ago. More recently, we have participated extensively in Contractor Quality Control (CQC) projects and in the development of their testing programs. Our senior materials consultants have been on the NMDOT Quality Assurance/Quality Control (QA/QC) and Technical Advisory Board committees for several years. These committees assist NMDOT with development and refinement of contractor quality control specifications.

Our experienced professionals and inspectors are fully trained, qualified and have certifications to accomplish all levels of special inspection and testing. This includes, but is not limited to, the following areas: fabrication and erection of metal structures and buildings, pressure equipment and piping, above ground storage tanks, electrical power generation facilities, and sign structures, reinforced concrete structures, post-tensioned concrete structures, ground movement control systems, special seismic inspection, location of buried or embedded structures, Skidmore-Wilhelm bolt testing, dynamic load testing, welder testing and certifications.

Our personnel can perform inspection and testing as per the following industry standards and specifications: ACI, AWS, American Society of Mechanical Engineers (ASME), American Petroleum Institute (API), American Society for Nondestructive Testing (ASNT), American Water Works Association (AWWA), ICC, Post Tensioning Institute (PTI) and other applicable codes and standards.

Laboratory testing requirements for a project may be specified by authorized City staff. To characterize the materials encountered at a particular project site, Wood is capable of providing a full suite of tests with all lab testing completed in accordance with AASHTO re:source, ASTM and/or NMDOT standards in order. Specialized testing also can be completed to support special materials engineering characterization as necessary. All testing will be performed by certified technicians in our accredited laboratories.

Wood's material services team possesses the necessary experience and knowledge gained from working on similar size and scope projects to address the City's Geotechnical and Quality Control Testing service objectives and expectations as demonstrated in the tables above.

Environmental Site Assessments

Our teams of scientists, engineers, and regulatory specialists maximize your operational flexibility throughout the permitting process and maximize performance improvements while helping to assure your asset complies with applicable standards and regulations. Phase I Environmental Site Assessments will be performed in accordance with the ASTM E1527-13 standard. Wood will perform a pedestrian survey of the site, a check of environmental regulatory databases, completion of the user questionnaire (All Appropriate Inquiry), an assessment of adjoining parcels, and a review of historical sources (verbal history from the owner or an individual familiar with the site history, city street directories, historical aerial photographs, and historical topographic maps). In addition, we will obtain flood plain information, verify transformer PCB status, contact the city or county zoning officials, contact the local Fire Department, obtain soil survey information, and obtain depth to groundwater information from the Office of the State Engineer's website. Our team can start on these services within 3-5 days of receiving the Notice to Proceed and can complete in approximately 3-5 weeks depending on the necessity of a Phase II Assessment.



II. Project Team Members

Wood has designated a team of specialists who are extensively qualified to deliver the wide spectrum of engineering services required for the projects under the City's Citywide On-Call Geotechnical Services contract. Our history and working relationships with the staff at the City will be a benefit to these projects as our team will quickly integrate and effectively become a seamless extension of City's staff. Our key personnel are in the organizational chart provided below and on the following pages. (Materials, Jacob Hays no longer works for the firm, please remove), Org. chart overlaps footer.

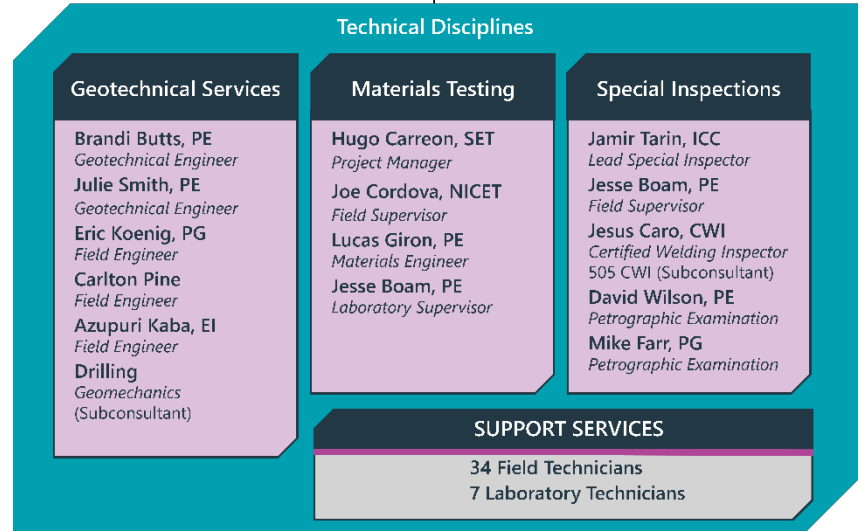
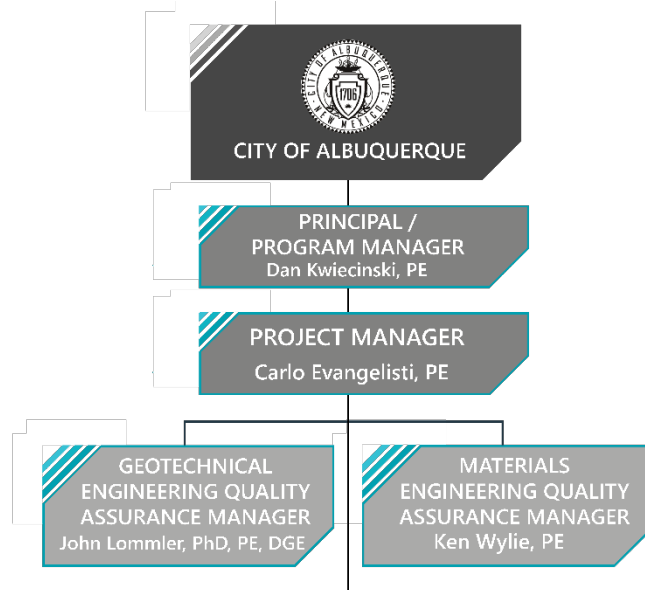
Carlo Evangelisti, PE – Geotechnical Services Project Manager

Education: MS, Civil Engineering, New Mexico State University; BS, Geology, Northern Arizona University | **Credentials:** PE in NM (#17392) and WA (#43063)

Carlo has over 19 years of experience in geotechnical engineering. His project experience includes field investigation, site characterization, analysis, design, geologic investigation and mapping, geologic hazard assessment, and geophysical surveys. His experience includes coordinating and performing exploratory field investigations; developing laboratory testing programs for evaluating physical properties of soils and rock for engineering design and analysis; evaluating results of site characterization programs and laboratory testing results; computer modeling of slope stability; shallow and deep foundation design; retaining wall design; rock slope stability analyses; asphalt and concrete paving design; writing reports and proposals; and soil and rock mechanics lab testing. Carlo is experienced in assessing geologic hazards such as landslides and faults and has performed geologic mapping on both large- and small-scale projects, using both aerial photography and field mapping techniques.

Relevant Experience:

- SE Area Command Center, Albuquerque, NM – Geotechnical Project Manager
- Tijeras Arroyo Project, Albuquerque, NM– Project Manager
- Woodward Road improvements, Albuquerque, NM – Project Manager
- City of Albuquerque, Wash Bays, Albuquerque, NM - Project Manager





Dan Kwiecinski, PE – Project Principal

Education: BS, Petroleum Engineering, University of Texas at Austin | **Credentials:** PE in NM (#13496); CA (#79375); KS (#19194); and TX (#71043)

Dan is currently the Office Manager for the NM Operations and is responsible for over \$14 million in services employing over 70 engineers, technicians and support staff and will act as the Principal Program Manager for projects under this contract. He is a civil engineer with over 35 years of experience. Dan has a wide range of experience in environmental, geotechnical, and materials engineering and has been involved with the management of these services. He also performs as a Principal Engineer with technical capabilities covering a wide range of processes for civil, geotechnical, environmental engineering, and materials testing. Dan approaches contract and project management with sound engineering, QA/QC, and strict adherence to safety and contract terms and conditions, budget and schedule.

John Lommler, PhD, PE, DGE – Geotechnical Engineering Quality Assurance Manager

Education: PhD, Civil Geotechnical Engineering, University of Akron; MS, Civil Structural/Geotechnical Engineering; BS, Civil Structural Engineering, University of Akron | **Credentials:** PE in NM (#11549) and OH (#37419)

John has over 50 years of experience in geotechnical, structural, and civil engineering. His experience includes serving as the Geotechnical Project Manager for major building structures, radioactive landfills (DOE) and municipal sanitary landfills, earthen, RCC and concrete dams and levees, wastewater and water treatment plants, pipelines, towers, tunnels, airports and highway projects including paving, slope stability, bridges, embankments, and retaining walls. His technical experience includes slope stability analyses, pile/drilled shaft vertical and lateral load analyses, pile group analyses, soil deformation stress/strain analyses, analysis and design of soil nail and MSE walls, foundation and embankment settlement analyses, and saturated and unsaturated flow analyses. John is a Board-Certified Geotechnical Engineer in the ASCE Geo-Institute.

Ken Wylie, PE – Materials Engineering Quality Assurance Manager

Education: BS, Civil Engineering, University of New Mexico | **Credentials:** PE in NM (#7733)

Ken has a wide range of experience in the realms of materials engineering, pavements, and quality control/quality assurance. His 44 years of experience includes consultation and engineering services on all aspects of soils, aggregates, cement, concrete and asphalt from research and development to design and specification development to construction to post-construction investigations. Ken has been involved with numerous design analyses, condition evaluations, and rehabilitation designs for both asphaltic concrete and portland cement concrete pavements. He has served on various industry committees charged with the review of agency specifications including NMDOT. Ken has become well versed on the topic of ASR in concrete and has served as an industry member on the AASHTO Lead State Team for ASR assisting in the development of the AASHTO ASR Guide Specification.

Hugo Carreon, SET – Materials Testing Project Manager

Technical Training: : ICC Soils Certification; ACI Concrete Testing Certifications (Field/Lab) AASHTO (TTCP); Materials (Lab/ Field) Certifications: Soils, Asphalt, Aggregate, Nuclear Densometer; AS, Environmental Technology

Hugo supervises all field technicians in NM and is Project Manager for various projects. He has 21 years of experience in materials testing with a wide range of experience dealing with numerous clients on hundreds of projects including buildings, municipal streets, commercial shopping centers, airports, tribal projects and state highway work. Hugo has extensive experience in quality control testing and construction materials testing, which includes standard construction testing in the fields of soils, asphalt and concrete and specialized testing on wood, concrete, and metals. He is a certified TTCP technician in soils, concrete, aggregate, and asphalt construction materials testing.



Brandi Butts, PE – Geotechnical Engineer

Education: BS, Civil Engineering, New Mexico State University; Supplementary Major in Applied Mathematics, New Mexico State University | **Credentials:** PE in NM (#23284)

Brandi has over nine years of geotechnical engineering experience. Her technical experience includes design of slope embankments using limit equilibrium methods, slope stability analyses, driven pile and drilled shaft analyses, micropile design, foundation and embankment settlement analyses, site characterization, design and construction inspection.

Joe Cordova, NICET – Field Supervisor

Technical Training: NICET Soils, Concrete, Level III; NICET Asphalt, Level II; TTCP Aggregates; TTCP Drilled Shaft Inspection; Asphalt/Superpave Laboratory Technician; Asphalt Institute Principles of Quality Hot Mix Asphalt; Nuclear Gauge Operator; ACI Concrete Field-Testing Level 1; OSHA 40-Hour HAZWOPER; MSHA Certified

Joe has a wide range of experience in construction management, inspection, and construction material quality control and materials production spanning 23 years. He has experience in both on-site field construction materials testing and quality control, and laboratory materials testing standards and procedures. Joe has performed numerous tests on soils, aggregates, asphalt concrete pavement, portland cement concrete pavement, and embankment sampling and testing on various transportation and building projects in and around NM. In addition to materials sampling and testing, he has experience in various forms of non-destructive concrete testing, as well as site investigations. Joe is very knowledgeable in the proper procedures set forth by governing agencies for materials sampling and testing in administering contracts, specifications, and plan interpretation. In addition to the above duties, Joe has been involved in all aspects of construction management including specification and plan review, as-built drawings, cost estimating, subcontract management, safety program oversight, and site inspection.

Jesse Boam, PE – Laboratory Supervisor

Education: MBA, Business Management, University of Phoenix; BS, Civil Engineering, Utah State University | **Credentials:** PE in NM (#24419); NV (#22699); and UT (#8299299-2202)

Jesse has over 15 years of experience in materials, design, and construction on civil engineering projects. Much of his work over the last 15 years has been focused on materials and design for major highway and rail projects. During the previous 3 years, Jesse focused on hundreds of projects involving geotechnical investigations, forensic investigations, design and environmental site assessments. He has completed several concrete and asphalt mix designs on federal, state and local government projects, as well as private and commercial projects.

Lucas Giron, PE – Materials Engineer

Education: BS, Engineering & Civil Engineering, Princeton University | **Credentials:** PE in NM (#22757)

Lucas is a materials specialist with 10 years of experience. He has managed and participated in a variety of projects requiring detailed evaluations and forensic investigations of construction materials. These projects have included the application of engineering judgement and opinions relative to portland cement concrete, aggregates and soils. Lucas has been involved with multiple material mix designs for a variety of applications and agencies including commercial agencies, municipalities, and state transportation departments. The mix compositions include portland cement concrete, roller compacted concrete, soil cement, and asphalt. Lucas is a certified National Ready-Mix Concrete Association inspecting assistant qualified to inspect both concrete batch plants and concrete mixing trucks. He provides structural forensic expertise in the form of non-destructive testing. Some of the test methods that Lucas is proficient in include pulse/impact echo, pulse velocity, low-strain pile integrity testing, and construction vibration monitoring. He has developed a strong expertise in the use of Ground Penetrating radar for locating, sizing, and identifying reinforcement, voids, and embedded elements in concrete structures.



Jamir Tarin, ICC – Lead Special Inspector

Technical Training: ICC Post Tensioning Inspector Certification; USACE Construction Quality Management Certificate; ACI Concrete Testing Certifications (Field/Lab) AASHTO (TTCP); Materials (Lab/ Field) Certifications: Soils, Asphalt, Concrete, Nuclear Densometer; Fire Proofing Inspector Certification; Reinforced Concrete Inspector Training; Structural Masonry Inspector Certification; Stormwater Pollution Prevention Plan (SWPPP) Inspector Certification.

Jamir has over 18 years of experience in construction materials sampling and testing. He has performed soils, concrete, and asphalt sampling and testing on numerous projects around NM. In addition to materials sampling and testing, Jamir has experience in various forms of non-destructive concrete testing, as well as site investigations. He is very knowledgeable in the proper procedures set forth by governing agencies for materials sampling and testing. Jamir is also an ICC Certified Special Inspector for both masonry and concrete and is Nuclear Densometer Operator certified.

Jesus Caro, CWI – Certified Welding Inspector

Technical Training: CWI, American Welding Society #06090081; AWS Workshop for Visual Testing/Inspections (VT); Level II on UT, MT and PT Classroom Hours

Jesus is a highly accomplished multi-tasking disciplined QA/QC Inspector with a record of developing and supporting successful projects and solutions within different Industries (Structural Constructional, Refinery, Power Plant, Wind, Nuclear and Bridge) for 28 years. Consistently recognized as an excellent resource to improve organizational effectiveness and efficiency through personal contribution. A professional who enjoys the synergies of idea exchange, collaboration and shared learning. Jesus is known for strong client relationships, high level of enthusiasm for business success, consistently demonstrating integrity while simultaneously projecting a positive personal and professional image. His experience includes Structural (D1.1), Bridge (D1.5), API1104, B31.1 (Nuclear), ISO 5817, D1.4, D1.6, ASME (Section 9), PT Level II, MT Level II, UT Level II, Mechanical Level II.

III. Respondent Experience

The projects on the following pages were awarded to Wood and exemplify our experience in providing similar services on a variety of projects similar in scope to that expected under this on-call contract.

Albuquerque Public Schools On-Call Material, Geotechnical Testing, and Special Inspection Services, Albuquerque, NM



Owner: Albuquerque Public Schools | **Role of Firm:** Prime | **Contract Dates:** 2000 – Ongoing (Task Orders delivered on-time) | **Contract Value:** \$2.7M (on budget)

Since 2000, Wood has been providing geotechnical, construction materials testing and special inspections for Albuquerque Public Schools (APS) on an on-call basis. Our team has built a relationship with APS based on quality, quick-response, and transparent business practices. Services have included: call-out, quick response, and full-time testing and inspection; short notice and non-standard work hours (including middle of the night concrete placements); materials engineering; soils and base course field and laboratory testing and inspection; concrete field and laboratory testing; asphalt field and laboratory testing; grout, mortar, and concrete masonry unit (CMU) field and laboratory testing and inspection; special structural inspection; specialized concrete mix designs; geotechnical site investigation and foundation design; attendance and involvement at meetings; and coordination and involvement with general contractors.



Albuquerque Metropolitan Arroyo Flood Control Authority On-Call Material, Geotechnical, and Material Testing Services, Albuquerque, NM



Owner: Albuquerque Metropolitan Arroyo Flood Control Authority | **Role of Firm:** Prime | **Contract Dates:** 2003 – Ongoing (Task Orders delivered on-time) | **Contract Value:** \$750,000 to date (on budget)

Since 2012, Wood has been providing geotechnical, construction materials testing, and special inspections for the Albuquerque Metropolitan Arroyo Flood Control Authority (AMAFCA) on an on-call basis. Our team has built a relationship with

AMAFCA based on quality, quick-response, and transparent business practices. Scope of work services include: call-out, quick response and full-time testing and inspection; short notice and non-standard work hours (including middle of the night concrete placements); materials engineering; soils and base course field and laboratory testing and inspection; concrete field and laboratory testing; asphalt field and laboratory testing; grout, mortar, and CMU field and laboratory testing and inspection; special structural inspection; specialized concrete mix designs; geotechnical site investigation and foundation design; attendance and involvement at meetings; and coordination and involvement with general contractors.

Representative projects provided under this on-call contract include Louisiana Gibson Regional Drainage; Ladera Dam #15; Isleta Storm Drain; Calabacillas Arroyo Bank Stabilization; Piedras Marcadas Water Quality; Valle de Oro 2nd Street Flood Control; and West I-40 Channel Improvements.

Sandia National Laboratories Geotechnical, Construction Materials Testing, and Special Inspection Services, Albuquerque, NM



Owner: Sandia National Laboratories | **Role of Firm:** Prime | **Contract Dates:** 1984 – Ongoing (Task Orders delivered on-time) | **Contract Value:** \$3.5 million (on budget)

Since 1984, Wood has been providing geotechnical, construction materials testing, and special inspections at various secured government sites requiring specialized nuclear gauge permitting, OSHA training, vehicle permitting, and

badging. Services have included call-out; quick response and full-time testing and inspections; short notice and non-standard work hours; materials engineering; soils and base course field and laboratory testing and inspections; concrete and asphalt field and laboratory testing; grout, mortar, and CMU field and laboratory testing and inspections; structural steel inspections; specialized concrete mix designs; and foundation design. Several of the buildings that Wood has provided both geotechnical and materials testing services have been LEED Certified buildings.

Ability to Perform Geotechnical, Soil, and Construction Material Services

Ability to Meet Geotechnical and Quality Control Testing Service Expectations

Our mission is to provide quality service, on schedule and within budget. This philosophy has provided our clients with services that meet schedule and budget requirements, as well as satisfy the project's purpose.

Wood's quality management objectives have reduced costly change orders through the development of accurate and concise documents, a constant focus on project goals and objectives, and taking immediate action to correct any part of the work that is not proceeding according to the predefined work plan.

The following key points summarize Wood's qualifications for this contract:



- Wood has previously provided the same services to other government agencies throughout the years under several on-call contracts, and as a subcontractor to several prime designers under numerous UNMH contracts.
- The Albuquerque area employs over 40 full-time technicians and inspectors. The Albuquerque laboratory is fully equipped to perform standard testing for soils, concrete, asphalt, and all special inspection testing.
- Wood maintains project management and accounting systems that enhance our performance and ensure efficient completion of projects within established budgets.
- Our Team has specific experience, equipment, and computer modeling capabilities for field investigation, laboratory testing and analysis that contribute to comprehensive evaluations of subsurface conditions.
- We routinely make extensive and creative use of high-quality graphical presentations of subsurface and surficial geological and geotechnical data in our reports to enhance understanding of project conditions.
- Our diverse skills will allow the City to supplement their staff as required to meet project objectives and could include general geotechnical and materials testing support, peer review with senior staff, or a variety of the more specialized services unique to Wood staff.

It is our understanding that the City work will include performing material and geotechnical services for the City of Albuquerque on a variety of project types. Project tasks may include the following:

1. Assisting City staff with peer review to provide added value to the execution of projects
2. Providing complete geotechnical engineering or design services for existing facilities, various remodel, retrofit, and new construction projects on an as-needed basis
3. Providing qualified personnel to support engineering analysis and reporting of field and laboratory samples and data
4. Performing investigations as required for specific projects including sampling, sample handling, and documentation of the work on field logs and forms
5. Performing laboratory testing as appropriate
6. Preparing final reports, when requested, to present site conditions and recommendations for design
7. Performing inspection of work as requested
8. Preparing final reports on a timely basis and electronic distribution to appropriate parties to present site findings and recommendations
9. Performing independent embankment and slope stability failure analysis
10. Performing engineering inspections for foundations and structural backfills
11. Providing special structural inspection and testing services for structural fill and backfill, structural steel and fireproofing, bituminous asphalt, and masonry inspection services (RFP indicates electrical and mechanical work, but there is zero mentioning of these services. Who will be performing?)
13. Appearing in court, as necessary, for litigation issues
15. Preparing invoices documenting all pay items agreed to upon initiation of the task assignment in accordance with City standards

Examples and Approach to Satisfying Requirements

Per the RFP, Wood has included sample materials testing/special inspection reports and excerpts from a sample geotechnical report (will these sample reports be included in the proposal but not part of this review?) representing our understanding of the scope of work to be included under this important on-call contract, which are included in the end of this section.

Wood is a results-oriented firm and partnering gets results. These developed partnering skills provide our clients with the ability to have a seamless partnered job. An effective partnering approach will improve the team environment,



schedule compliance, cost effectiveness, minimize impacts; reduce claims and build relationships with the affected stakeholders, thereby leading to a successfully completed project. Wood's partnering approach is based upon mutual respect, trust, open communications and integrity.

By working together with the City, the design team, architect, and the contractor, we will be able to resolve most issues at the field/lab or project levels of our organizations. Our open communications will help the project team identify potential problems early on, so they can immediately begin to seek appropriate solutions. If a dispute is not resolved at these lower levels, then the dispute will be escalated to the next level. Our goal will be to settle disputes at the lowest level possible using early identification, honest communication, and a focus on resolution while keeping the City, the design team, and the contractor appropriately informed about any significant concerns. In the event of a dispute arising between the contractor's QC and Wood's sampling and testing process or testing results; a dispute resolution laboratory that is an accredited AASHTO re:source Materials Reference Laboratory Accreditation (AMRL) will be employed to resolve these differences. Wood's team will make cooperative efforts to identify the cause of discrepancies in test results with thorough reviews of the technical procedures; test methods, test data, calculations and results; sampling procedures; test equipment and certifications; and lab procedures to look for procedural or technical causes for test discrepancies. Corrective actions will be taken immediately if the cause of the discrepancy is located during this review. Wood will generate a report identifying and defining the problem and its cause and the solution to prevent the problem from happening again. This report will be distributed and discussed between the client, the design team, the contractor and Wood staff. Wood will keep open and honest communications between all parties and all discussion will be open and honest.

Testing Experience and Competence

- Achieved highest level of technical expertise and accreditation available in the US for testing excellence and technical competence
- Proven ability for unbiased, technically accurate field and laboratory analysis in accordance with procedures established by ASTM, AASHTO re:source, ACI, ATI, International Conference of Building Officials (ICBO), AWS, Uniform Building Code (UBC), and other national or local agencies to meet project-specific requirements
- Exemplary internal quality control, in conjunction with inspections by unbiased external agencies, providing a record for the substantiation of test results for quality assurance or in the event of dispute.

Past Performance/Project History

Related Experience/References

Wood is currently providing geotechnical, construction testing, and special inspection services through "on-call contracts" for various government agencies. These contracts, provided in the table below, require services similar to those that will be required by the City under this contract. References are also included and we encourage the City to contact them regarding our past performances.

| Client | Type of Work | Dates | Responsible Party | Est. Contract Amount to Date |
|--------------------------------------------------|--------------------------------------------------------------------------------|--------------|-----------------------------------|------------------------------|
| City of Albuquerque | Materials Testing | 2005-Present | Stephen Woodall (505) 857-8021 | \$1.5M |
| Albuquerque Metropolitan Flood Control Authority | Geotechnical, Materials Testing, and Environmental Engineering | 2013-Current | Jerry Lavato (505) 884-2215 | \$600K |
| Albuquerque Public Schools | Geotechnical Engineering, Materials Testing and Special Structural Inspections | 2010-Present | Karen Alarid (505) 881-8415 | \$2.5M |
| Bernalillo County | Materials Testing and Special Structural Inspections | 2009-Present | Corrine Baca (505) 848-1555 | \$20K |



| | | | | |
|--------------------------------------|--------------------------------------------------------------------------------|--------------|------------------------------------|--------|
| Bernalillo Public Schools | Materials Testing and Special Structural Inspections | 2014-Present | Martin Montañño (505) 404-5742 | \$450K |
| City of Carlsbad | Materials Testing and Special Structural Inspections | 2014-Present | John Lowe (575) 885-6262 | \$450K |
| City of Rio Rancho | Materials Testing and Special Structural Inspections | 2009-Present | Joseph Baca (505) 891-5010 | \$25K |
| Los Alamos County | Geotechnical Engineering, Materials Testing and Special Inspections | 2008-Present | Ernesto Gallegos (505) 662-8119 | \$650K |
| Los Alamos National Laboratory | MTAO Geotechnical, Materials Testing, and NQA-1 Concrete Mix Designs | 2014-Present | Julie Maez (505) 667-4880 | \$597K |
| NMDOT | Geotechnical Engineering, Materials Testing and Special Structural Inspections | 1996-Present | Michelle Mann (505) 476-3788 | \$3.5M |
| NM Public School Facility Authority | Geotechnical Engineering and Materials Testing Services | 2014-Present | Shatona Martin (505) 468-0286 | \$600K |
| Sandoval County | Materials Testing and Special Structural Inspections | 2008-Present | Fred Marquez (505) 404-5827 | \$120K |
| Sandia National Laboratory | Geotechnical Engineering, Materials Testing, and Special Inspections | 1990-Present | Krista Smith (505) 284-9840 | \$15M |
| Santa Fe Public Schools | Geotechnical Engineering, Materials Testing and Special Structural Inspections | 2009-Present | Leo Prenevost (505) 467-3406 | \$838K |
| Seminole Independent School District | Materials Testing and Special Structural Inspections | 2011-Present | Jesse Greenfield (432) 758-3662 | \$30K |
| State of NM GSD PCD | Special Inspections | 2010-Present | Peter Allen (505) 827-2140 | \$750K |
| Taos School District | Materials Testing and Special Structural Inspections | 2010-Present | Quinton Wood (575) 758-5200 | \$60K |
| USACE -CAFB | Materials Testing and Special Structural Inspections | 2010-Present | Fabian Lopez (575) 784-7218 | \$1.5M |
| Zuni Public School District | Materials Testing and Special Structural Inspections | 2015-Present | Martin Romine (505) 782-5511 | \$25K |

IV. Technical Approach

Approach to Geotechnical, Soil, and Construction Material Services

Methodologies

Wood is a results-oriented firm and know that partnering gets results. These developed partnering skills will provide the City with the ability to have a seamless team effort for projects. This effective partnering approach will improve the team environment, schedule compliance, cost effectiveness, minimize impacts; reduce claims and build relationships with the affected stakeholders, thereby leading to a successfully completed project. Wood's partnering approach is based upon mutual respect, trust, open communications, and integrity.

By working together with the City, the design team, architect, and the contractor, we will be able to resolve most issues at the field/lab or project levels of our organizations. Our open communications will help the project team identify potential problems early on, so they can immediately begin to seek appropriate solutions. If a dispute is not



resolved at these lower levels, then the dispute will be escalated to the next level. Our goal will be to settle disputes at the lowest level possible using early identification, honest communication and a focus on resolution while keeping the City, the design team, and the contractor appropriately informed about any significant concerns. In the event of a dispute arising between the contractor's QC and Wood's sampling and testing process or testing results; a dispute resolution laboratory that is an accredited AMRL will be employed to resolve these differences. Wood's team will make cooperative efforts to identify the cause of discrepancies in test results with thorough reviews of the technical procedures; test methods, test data, calculations and results; sampling procedures; test equipment and certifications; and lab procedures to look for procedural or technical causes for test discrepancies. Corrective actions will be taken immediately if the cause of the discrepancy is located during this review. Wood will generate a report identifying and defining the problem and its cause and the solution to prevent the problem from happening again. This report will be distributed and discussed between the client, the design team, the contractor and Wood staff. Wood will keep open and honest communications between all parties and all discussions.

Quality Assurance

Wood has established an ongoing quality control program that is an integral part of our project management commitment. The program, which is identified in Wood's Project Review Policy, sets forth the direct, definable responsibilities of each member of the project team in producing a quality product for our client. Key elements of our quality control process emphasize management controls, periodic reviews and documentation of the reviews. Depending on the complexity of the project and the City's needs, weekly to monthly reviews may be conducted as part of project meetings that address task schedules, the overall project schedule, and the results and quality of the work completed to date. Wood's internal review system provides an orderly and scheduled approach to checking document preparation at specific intervals.

Wood's quality management objectives are to reduce costly change orders through the development of accurate and concise documents, to focus on project goals and objectives, and to take immediate action to correct any part of the work that is not proceeding according to the predefined work plan. Within this framework, Wood is continually seeking to improve the presentation of reports, including graphics, to better communicate the test results of the project.

Strategies

Wood's goal is to meet and exceed the needs of the City at every level. Over the years, we have established a trustworthy and sound working relationship with the City. Our team believes that project success is dependent on a sound strategy and plan.

The backbone of our approach will be our materials and geotechnical professionals/technicians led by Wood's proposed Project Manager, Carlo Evangelisti, PE. He will assist the City in the successful completion of each services task order assigned to Wood through a systematic four-step approach. This four-step process is illustrated on the right (was there supposed to be an illustration?). Our basic approach addresses all key elements for providing as-need staff augmentation services to the City.

Based on our experience working with the City, we will require actions to address technical disputes with test results. Technical disputes/complaints trigger an internal review process of a particular test or test sample. Our practice is to question and complete a thorough review of our internal practices first. If the review identifies an internal problem, it is re-tested or otherwise resolved and corrected documents will be prepared in accordance with ASTM standards. If no internal problem is identified, we will engage the City and the party bringing forth the complaint to work together to resolve the dispute. The philosophy of flexibility to facilitate resolution of the City's needs and issues will be a fundamental part of our overall goals.

Effective communication will be key to maintaining successful project results. Wood's project management staff will make regular contact with City personnel, even when things are running smoothly, to maintain open communication,



and to address minor issues before they become major issues. Additionally, Wood's technicians will establish a line of communications with City staff and other stakeholders involved with the projects. By identifying and discussing technical project issues early on, costly interruption in the work can be avoided. All field staff will be equipped with cell phones, Wi-Fi capability and laptop computers.

Quality Management

Wood has an established quality management program (QMP) that is designed to provide reliable, high-quality deliverables and exemplary service to our clients.

Technical review is a critical, mandatory procedure in Wood's QMP that ensures our clients receive the consistently high-quality project deliverables they expect. We will conduct technical review of all City material and geotechnical services wherein we will verify results and calculations, independently confirm conclusions, and compare them to the project scope and in-house compliance procedures. We will also ensure technical reviewers are independent from the development of the work product and are qualified in their appropriate subject areas.

- Wood's assigned Project Managers will have the primary responsibility of successfully delivering high-quality scope of work deliverables and fulfilling the City's objectives on-time and within budget. Working within our QMP guidelines, our assigned Project Managers will plan for critical procedures to ensure the City has accurate and complete work is delivered against schedule commitments.

V. Cost Control

Wood realizes the importance of cost considerations to the City. As such, our team has strict cost control procedures in place to prevent extraneous charges to any of our clients. Wood uses BST accounting software. Wood routinely performs work for federal, state, and local government agencies. Our team has procedures to handle all forms of contracts and task orders. Wood is routinely checked by federal auditors for compliance with time keeping processes and corporate accounting practices. Wood has established procedures for the following cost control activities:

- Maintaining budgetary cost controls during project set-up and work. This includes weekly budget pre-bills to the project manager(s) to maintain current cost control.
- Written agreement of scope, man-hours, and costs for a task order with City personnel prior to the commencement of work.
- Maintaining government regulations regarding charges for outside services and applicable mark-ups on those services.
- Providing documented accounts for all charges for a given project.
- Proposed Project Manager Carlo Evangelisti, PE will have "around the clock" access to project budget and financial information through Wood's web-based Project Management Portal. He will generate earned value analysis reports on a regular basis to provide a view of project budget expended versus time and effort expended to assess if the overall project is on budget or if corrective action is needed to align the budget with the schedule. Carlo will engage in regular internal reviews to assess project status, budgets, and quality control with the Senior Leads.

APPENDIX



Agreement and Insurance Certification

We have reviewed the standard agreement for Engineering or Architectural or Landscape Architectural Services that are required for the project listed below, and hereby certify that we will, if selected for the project, enter into this standard agreement for this project and meet all insurance requirements listed therein.

This Certification is intended for the use of the City of Albuquerque only, in conjunction with the award of the Engineering or Architectural or Landscape Architectural Services Agreement for Project:

Project Name City Wide Geotechnical On-Call Services

Project Number 5637.00

Date August 5, 2020 Firm Name Wood Environment & Infrastructure Solutions, Inc.

Signature 

Title Principal/NM Operations Manager

STATE OF NEW MEXICO)

) ss

COUNTY OF BERNALILLO)

The above Certification was subscribed before me, the undersigned authority, by:

who swore upon oath that this Certification was signed of free act and deed, on this

_____ day of _____, 20____

(Notary Public)

My commision expires: _____



CERTIFICATE OF LIABILITY INSURANCE

DATE(MM/DD/YYYY)
06/29/2020

THIS CERTIFICATE IS ISSUED AS A MATTER OF INFORMATION ONLY AND CONFERS NO RIGHTS UPON THE CERTIFICATE HOLDER. THIS CERTIFICATE DOES NOT AFFIRMATIVELY OR NEGATIVELY AMEND, EXTEND OR ALTER THE COVERAGE AFFORDED BY THE POLICIES BELOW. THIS CERTIFICATE OF INSURANCE DOES NOT CONSTITUTE A CONTRACT BETWEEN THE ISSUING INSURER(S), AUTHORIZED REPRESENTATIVE OR PRODUCER, AND THE CERTIFICATE HOLDER.

IMPORTANT: If the certificate holder is an ADDITIONAL INSURED, the policy(ies) must have ADDITIONAL INSURED provisions or be endorsed. If SUBROGATION IS WAIVED, subject to the terms and conditions of the policy, certain policies may require an endorsement. A statement on this certificate does not confer rights to the certificate holder in lieu of such endorsement(s).

| | | |
|------------------------------------------------------------------------------------------------------------------------------------|--------------------------------------------------|---------------------------------------|
| PRODUCER Aon Risk Services Southwest, Inc. Houston TX Office 5555 San Felipe Suite 1500 Houston TX 77056 USA | CONTACT NAME: | |
| | PHONE (A/C. No. Ext): (866) 283-7122 | FAX (A/C. No.): (800) 363-0105 |
| INSURED JWGUSA Holdings, Inc. and its Subsidiaries and Affiliates 17325 Katy Freeway Houston TX 77084 USA | E-MAIL ADDRESS: | |
| | INSURER(S) AFFORDING COVERAGE | |
| | NAIC # | |
| | INSURER A: Zurich American Ins Co | |
| | INSURER B: ACE American Insurance Company | |
| | INSURER C: | |
| | INSURER D: | |
| INSURER E: | | |
| INSURER F: | | |

Holder Identifier :

COVERAGES **CERTIFICATE NUMBER:** 570082643624 **REVISION NUMBER:**

THIS IS TO CERTIFY THAT THE POLICIES OF INSURANCE LISTED BELOW HAVE BEEN ISSUED TO THE INSURED NAMED ABOVE FOR THE POLICY PERIOD INDICATED. NOTWITHSTANDING ANY REQUIREMENT, TERM OR CONDITION OF ANY CONTRACT OR OTHER DOCUMENT WITH RESPECT TO WHICH THIS CERTIFICATE MAY BE ISSUED OR MAY PERTAIN, THE INSURANCE AFFORDED BY THE POLICIES DESCRIBED HEREIN IS SUBJECT TO ALL THE TERMS, EXCLUSIONS AND CONDITIONS OF SUCH POLICIES. LIMITS SHOWN MAY HAVE BEEN REDUCED BY PAID CLAIMS. **Limits shown are as requested**

| INSR LTR | TYPE OF INSURANCE | ADDL INSD | SUBR WVD | POLICY NUMBER | POLICY EFF (MM/DD/YYYY) | POLICY EXP (MM/DD/YYYY) | LIMITS |
|----------|---------------------------------------------------------------------------------------------------------------------------------------------------------------------------------------------------------------------------------------------------------------------------------------------------------------------------|---------------------------------------|----------|-----------------------------------------------------------------|--------------------------|--------------------------|------------------------------------------------------------------------------------------------------------------------------------------------------------------------------------------------------------------------------------|
| A | <input checked="" type="checkbox"/> COMMERCIAL GENERAL LIABILITY <input type="checkbox"/> CLAIMS-MADE <input checked="" type="checkbox"/> OCCUR GEN'L AGGREGATE LIMIT APPLIES PER: <input type="checkbox"/> POLICY <input checked="" type="checkbox"/> PROJECT <input type="checkbox"/> LOC OTHER: | | | GLO484608500 | 07/01/2020 | 07/01/2021 | EACH OCCURRENCE \$5,000,000 DAMAGE TO RENTED PREMISES (Ea occurrence) \$100,000 MED EXP (Any one person) \$5,000 PERSONAL & ADV INJURY \$5,000,000 GENERAL AGGREGATE \$5,000,000 PRODUCTS - COMP/OP AGG \$5,000,000 |
| B | AUTOMOBILE LIABILITY <input checked="" type="checkbox"/> ANY AUTO <input type="checkbox"/> OWNED AUTOS ONLY <input type="checkbox"/> HIRED AUTOS ONLY <input type="checkbox"/> SCHEDULED AUTOS <input type="checkbox"/> NON-OWNED AUTOS ONLY | | | ISA H25301900 | 07/01/2020 | 07/01/2021 | COMBINED SINGLE LIMIT (Ea accident) \$2,000,000 BODILY INJURY (Per person) BODILY INJURY (Per accident) PROPERTY DAMAGE (Per accident) |
| | UMBRELLA LIAB <input type="checkbox"/> OCCUR EXCESS LIAB <input type="checkbox"/> CLAIMS-MADE DED <input type="checkbox"/> RETENTION | | | | | | EACH OCCURRENCE AGGREGATE |
| B | WORKERS COMPENSATION AND EMPLOYERS' LIABILITY ANY PROPRIETOR / PARTNER / EXECUTIVE OFFICER/MEMBER EXCLUDED? (Mandatory in NH) If yes, describe under DESCRIPTION OF OPERATIONS below | <input checked="" type="checkbox"/> N | N/A | WLRC67455708 Work Comp- AOS SCFC67455745 Work Comp- WI | 07/01/2020 07/01/2020 | 07/01/2021 07/01/2021 | <input checked="" type="checkbox"/> PER STATUTE <input type="checkbox"/> OTHER E.L. EACH ACCIDENT \$1,000,000 E.L. DISEASE-EA EMPLOYEE \$1,000,000 E.L. DISEASE-POLICY LIMIT \$1,000,000 |

Certificate No : 570082643624

DESCRIPTION OF OPERATIONS / LOCATIONS / VEHICLES (ACORD 101, Additional Remarks Schedule, may be attached if more space is required)
Evidence of Insurance for wood in the USA. See attached addendum for Additional Named Insured wood companies.

CERTIFICATE HOLDER**CANCELLATION**

| | |
|--------------------------------------------------------------------------------------------------------|----------------------------------------------------------------------------------------------------------------------------------------------------------------|
| JWGUSA Holdings, Inc. and its Subsidiaries and Affiliates 17325 Park Row Houston TX 77084 USA | SHOULD ANY OF THE ABOVE DESCRIBED POLICIES BE CANCELLED BEFORE THE EXPIRATION DATE THEREOF, NOTICE WILL BE DELIVERED IN ACCORDANCE WITH THE POLICY PROVISIONS. |
| | AUTHORIZED REPRESENTATIVE <i>Aon Risk Services Southwest, Inc.</i> |



ADDITIONAL REMARKS SCHEDULE

Page _ of _

| | | |
|-------------------------------------------------------|-----------|----------------------------------------|
| AGENCY Aon Risk Services Southwest, Inc. | | NAMED INSURED JWGUSA Holdings, Inc. |
| POLICY NUMBER See Certificate Number: 570082643624 | | |
| CARRIER See Certificate Number: 570082643624 | NAIC CODE | EFFECTIVE DATE: |

ADDITIONAL REMARKS

THIS ADDITIONAL REMARKS FORM IS A SCHEDULE TO ACORD FORM,

FORM NUMBER: ACORD 25 **FORM TITLE:** Certificate of Liability Insurance

Additional Named Insured

JWGUSA Holdings, Inc.
 Wood Group USA, Inc.
 Wood Environment & Infrastructure Solutions, Inc.
 AMEC Construction Management, Inc.
 AMEC E&E, P.C.
 AMEC Engineering and Consulting of Michigan, Inc.
 Amec Foster Wheeler Energia, S.L.U.
 Amec Foster Wheeler Industrial Power Company, Inc.
 Amec Foster Wheeler Kamtech, Inc.
 Amec Foster Wheeler Martinez, Inc.
 Amec Foster Wheeler North America Corp
 Amec Foster Wheeler Power Systems, Inc.
 Amec Foster Wheeler USA Corporation
 Amec Foster Wheeler Ventures, Inc.
 BMA Solutions, Inc.
 C E C Controls Company, Inc.
 Cape Software, Inc.
 Foster Wheeler Intercontinental Corporation
 Ingenious, Inc.
 Kelchner, Inc.
 MACTEC Engineering and Consulting, P.C.
 MASA Ventures, Inc.
 Mustang International, Inc.
 Rider Hunt International USA, Inc.
 RWG (Repair & Overhauls) USA, Inc.
 Swaggart Brothers, Inc.
 Wood Design, LLC
 Wood Group Alaska, LLC
 Wood Group PSN, Inc.
 Wood Group UK, Ltd
 Wood Massachusetts, Inc.
 Wood Programs, Inc.

Pay Equity Reporting Form PE10-249

| | |
|---------------------------------|---------------------------------------------------|
| Company name: | Wood Environment & Infrastructure Solutions, Inc. |
| Mailing address line 1: | 8519 Jefferson Street NE |
| Mailing address line 2: | 0 |
| City, state, zip code: | Albuquerque, NM 87113 |
| Phone: | 505-821-1801 |
| E-mail address: | dan.kwiecinski@woodplc.com |
| FEIN number: | 91-1641772 |
| EAN number: | 0 |
| SHARE vendor number | 0 |
| Reporting calendar year: | 2020 |

| Job Category | No. Females | No. Males | Gap (Absolute %) |
|-------------------------------|-------------|-----------|------------------|
| 1 - Officers and Managers | 3 | 12 | 12.33% |
| 2 - Professionals | 11 | 17 | 6.36% |
| 3 - Technicians | 2 | 16 | 0.47% |
| 4 - Sales Workers | 0 | 0 | N/A |
| 5 - Office and Admin. Support | 6 | 0 | N/A |
| 6 - Craft Workers (Skilled) | 0 | 1 | N/A |
| 7 - Operatives (Semi-Skilled) | 0 | 0 | N/A |
| 8 - Laborers (Unskilled) | 0 | 0 | N/A |
| 9 - Service Workers | 0 | 0 | N/A |

| | |
|------------------------------------------|--------|
| Total # Job Categories With No Employees | 4 |
| Total # Female Only Job Categories | 1 |
| Total # Male Only Job Categories | 1 |
| Total # Females (all categories) | 22 |
| Total # Full Time Females | 14 |
| Total # Part Time Females | 8 |
| Total # Males (all categories) | 46 |
| Total # Full Time Males | 38 |
| Total # Part Time Males | 8 |
| Total # Employees | 68 |
| Female % Workforce | 32.35% |
| Male % Workforce | 67.65% |

Document must be signed by the principal executive of the company:

ITB #: _____ RFP# Project 5637.00 PO# _____

Daniel A. Kwiecinski, Principal/NM Operations Manager

Name and title, printed



Signature

August 5, 2020

Date

wood.

Wood Environment & Infrastructure Solutions, Inc.
8519 Jefferson Street NE
Albuquerque, NM 87113
Phone: (505) 821-1801

www.woodplc.com

