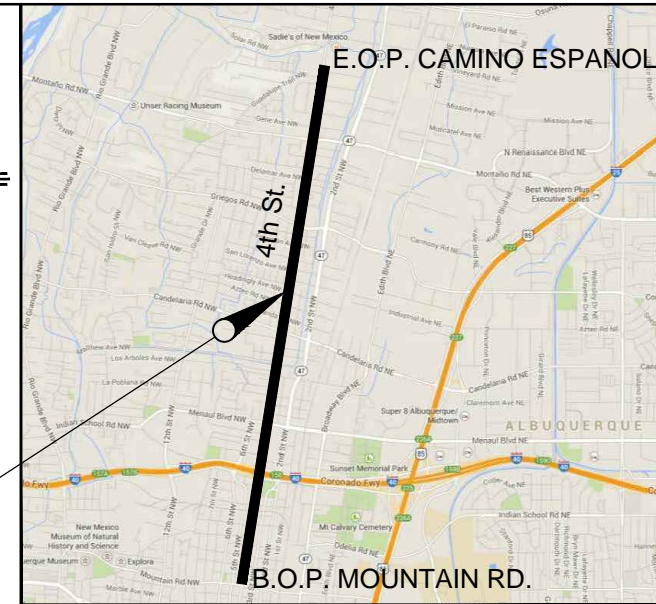


CITY OF ALBUQUERQUE 15% CONSTRUCTION PLANS

NORTH FOURTH STREET REDEVELOPMENT STUDY

MOUNTAIN RD. TO CAMINO ESPANOL
COA Project 5878.91



VICINITY MAP
Zone Atlas Maps E thru J -14-Z

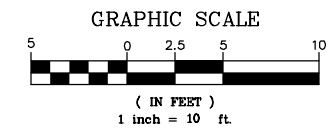
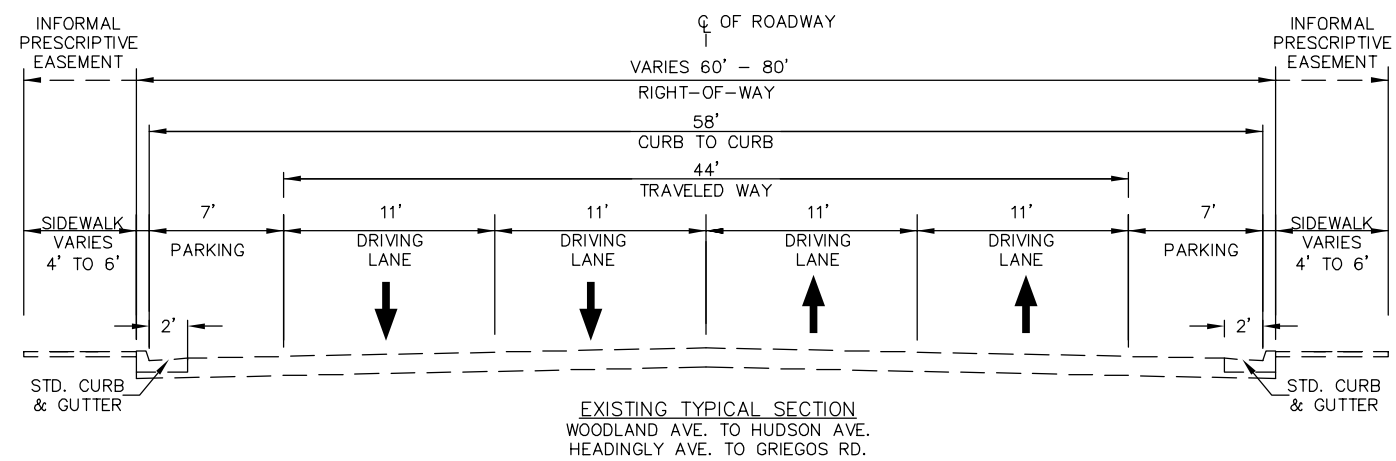
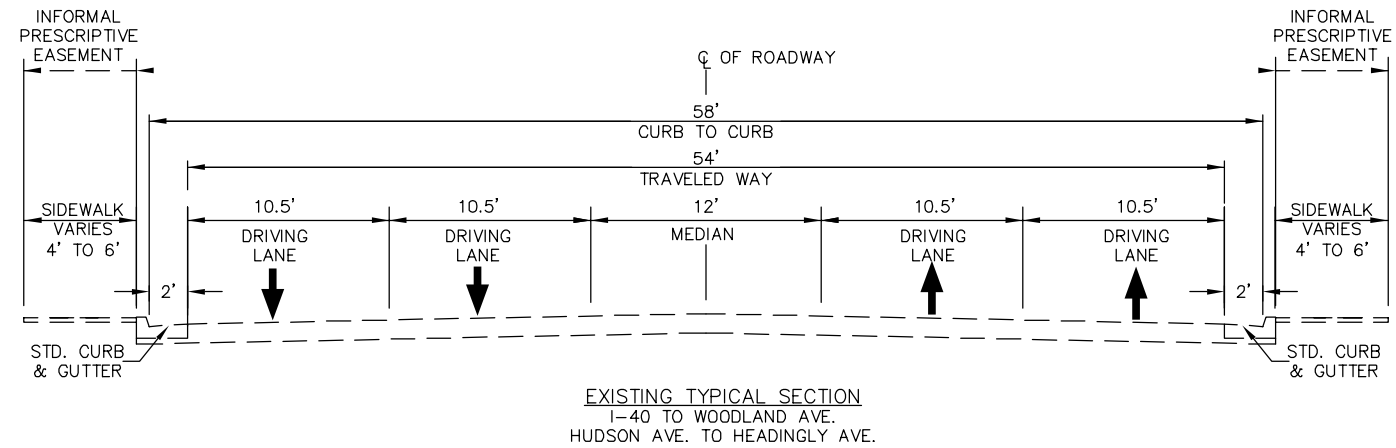
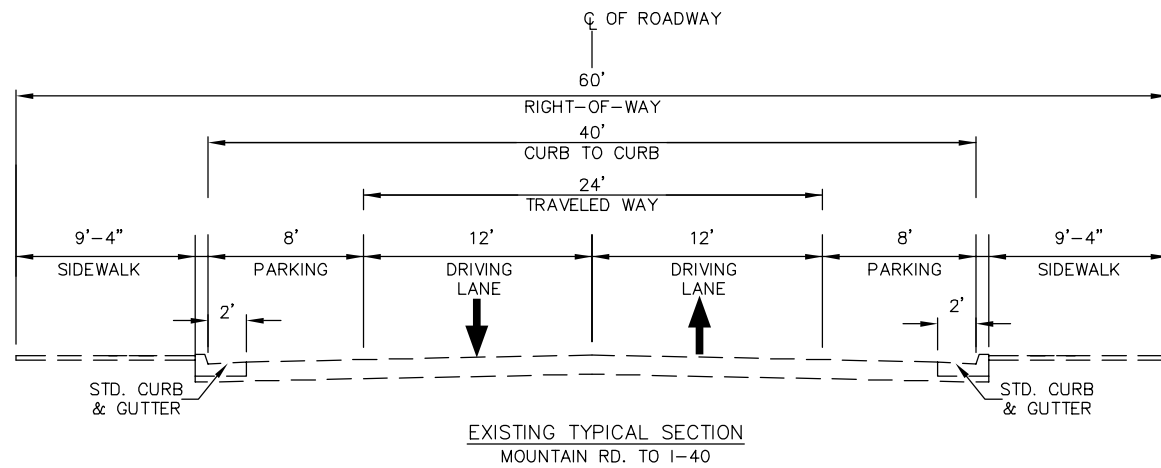
SHEET NO.	DESCRIPTION	GROUP
1	TITLE SHEET	GENERAL INFORMATION
2 TO 3	EXISTING TYPICAL SECTIONS	TYPICAL SECTIONS
4 TO 7	PROPOSED TYPICAL SECTIONS	
8	PLAN SHEET - B.O.P. TO STA. 7+00.00	ROADWAY PLANS
9	PLAN SHEET - STA. 7+00.00 TO STA. 17+00.00	
10	PLAN SHEET - STA. 17+00.00 TO STA. 27+00.00	
11	PLAN SHEET - STA. 27+00.00 TO STA. 37+00.00	
12	PLAN SHEET - STA. 37+00.00 TO STA. 47+00.00	
13	PLAN SHEET - STA. 47+00.00 TO STA. 57+00.00	
14	PLAN SHEET - STA. 57+00.00 TO STA. 67+00.00	
15	PLAN SHEET - STA. 67+00.00 TO STA. 77+00.00	
16	PLAN SHEET - STA. 77+00.00 TO STA. 87+00.00	
17	PLAN SHEET - STA. 87+00.00 TO STA. 97+00.00	
18	PLAN SHEET - STA. 97+00.00 TO STA. 107+00.00	
19	PLAN SHEET - STA. 107+00.00 TO STA. 117+00.00	
20	PLAN SHEET - STA. 117+00.00 TO STA. 127+00.00	
21	PLAN SHEET - STA. 127+00.00 TO STA. 137+00.00	
22	PLAN SHEET - STA. 137+00.00 TO STA. 147+00.00	
23	PLAN SHEET - STA. 147+00.00 TO STA. 157+00.00	
24	PLAN SHEET - STA. 157+00.00 TO STA. 167+00.00	
25	PLAN SHEET - STA. 167+00.00 TO STA. 177+00.00	
26	PLAN SHEET - STA. 177+00.00 TO STA. 187+00.00	
27	PLAN SHEET - STA. 187+00.00 TO STA. 197+00.00	
28	PLAN SHEET - STA. 197+00.00 TO E.O.P.	
TOTAL = 28		

**PRELIMINARY
NOT FOR CONSTRUCTION
SUBMITTED NOVEMBER 26, 2014**



**PARSONS
BRINCKERHOFF**

REV.	SHEETS	CITY ENGINEER	DATE	USER DEPARTMENT	DATE	USER DEPARTMENT	DATE
ENGINEERS STAMP & SIGNATURE		APPROVALS		ENGINEER		DATE	
		DRC Chairman				APPROVED FOR CONSTRUCTION	
		Transportation					
		ABCWJA					
		Hydrology					
		Parks					
		Constr. Coord.				City Engineer _____ Date _____	
		Traffic Eng.					
		Transit					
		AMAFCA				SHEET 1 of 28	
		PROJECT NO.		5878.91			



PARSONS BRINCKERHOFF

CITY OF ALBUQUERQUE
DEPARTMENT OF MUNICIPAL DEVELOPMENT
TRANSPORTATION DIVISION

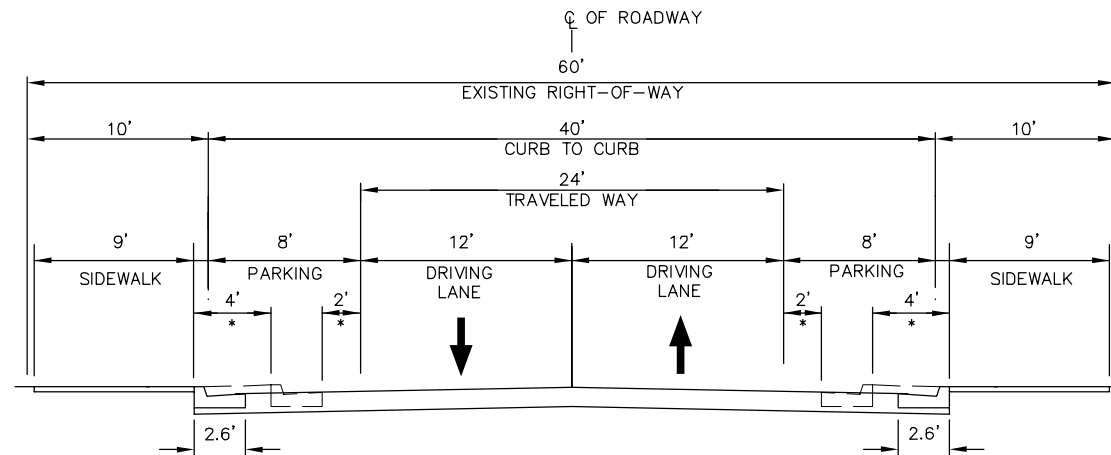
NORTH FOURTH STREET REDEVELOPMENT STUDY
MOUNTAIN RD. TO CAMINO ESPANOL
EXISTING TYPICAL SECTIONS

DESIGN REVIEW COMMITTEE	CITY ENGINEER APPROVAL	MO./DAY/YR.	MO./DAY/YR.

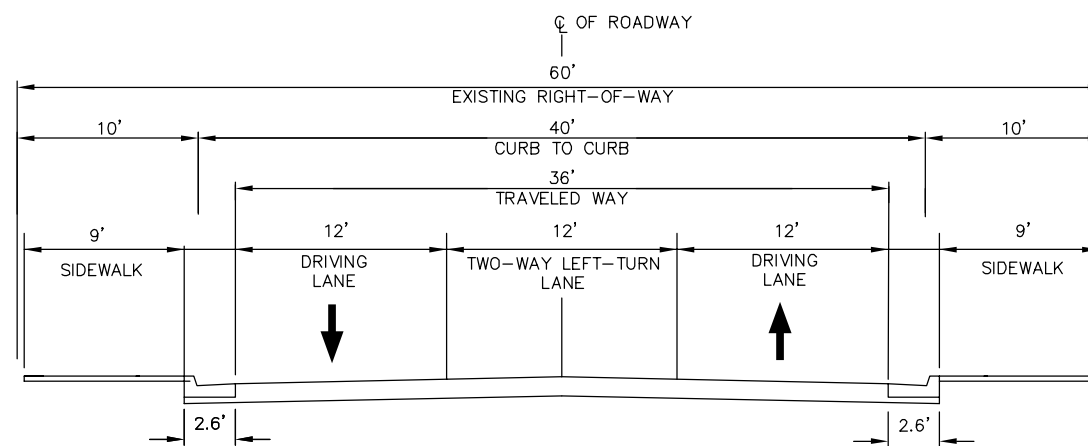
City Project No. COA 5878.91 Zone Map No. Sheet 2 of 28

AS BUILT INFORMATION		BENCH MARKS		SURVEY INFORMATION		ENGINEER'S SEAL	
CONTRACTOR	DATE			FIELD NOTES	DATE	PRELIMINARY NOT FOR CONSTRUCTION	NO. DATE
WORKED BY	DATE			BY			
INSPECTOR'S ACCEPTANCE BY	DATE						
VERIFICATION BY	DATE						
DRAWINGS CORRECTED BY	DATE						
MICRO-FILM INFORMATION	DATE						
RECORDED BY	DATE						
	NO.						

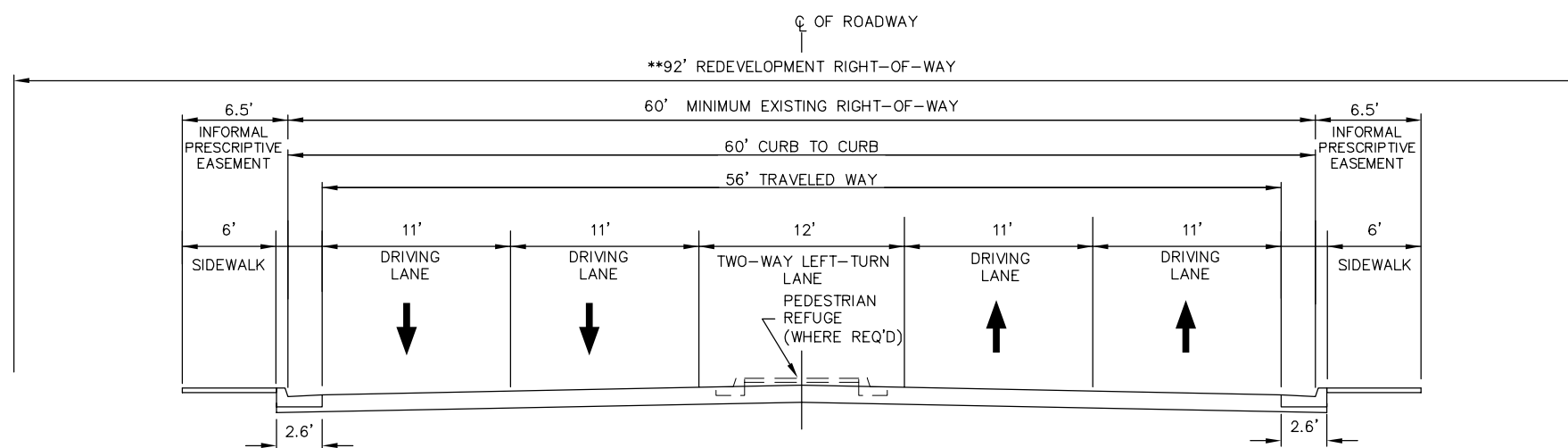
PRELIMINARY
NOT FOR CONSTRUCTION



PROPOSED TYPICAL SECTION 1
MOUNTAIN RD. TO RAILROAD TRACKS



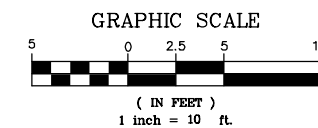
PROPOSED TYPICAL SECTION 2
RAILROAD TRACKS TO I-40



INTERIM TYPICAL SECTION 3
I-40 TO MENAUL BLVD.
CLAREMONT RD. TO MILDRED AVE.
CANDELARIA BLVD. TO MESCALERO RD.
SAN CLEMENTE RD. TO FREEMAN AVE.
BELLROSE AVE. TO GRIEGOS RD.

NOTE: TYPICAL SECTIONS 3 THRU 5 ARE FOR INTERIM CONSTRUCTION UNTIL REDEVELOPMENT ALONG THE CORRIDOR OCCURS, AND THE PROPOSED ULTIMATE TYPICAL SECTION CAN BE IMPLEMENTED.

**REDEVELOPMENT RIGHT-OF-WAY INDICATES THE FULL WIDTH OF RIGHT-OF-WAY REQUIRED TO CONSTRUCT THE RECOMMENDED TYPICAL SECTION. SEE SHEET 6 FOR PROPOSED ULTIMATE TYPICAL SECTION.



PARSONS BRINCKERHOFF



CITY OF ALBUQUERQUE
DEPARTMENT OF MUNICIPAL DEVELOPMENT
TRANSPORTATION DIVISION

NORTH FOURTH STREET REDEVELOPMENT STUDY
MOUNTAIN RD. TO CAMINO ESPANOL
PROPOSED TYPICAL SECTIONS

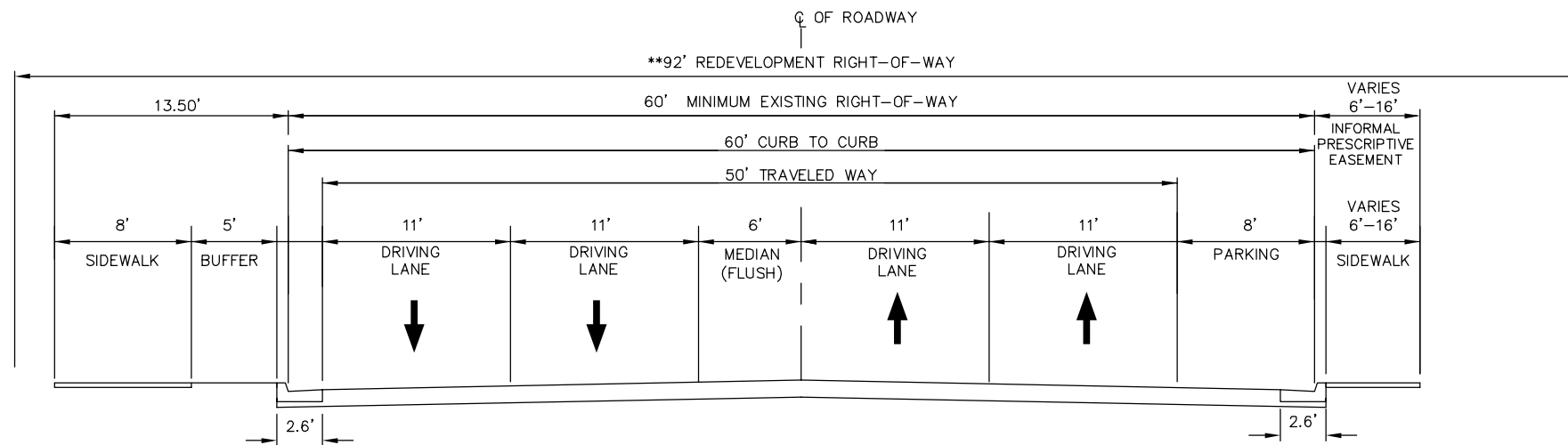
DESIGN REVIEW COMMITTEE	CITY ENGINEER APPROVAL	MO./DAY/YR.	MO./DAY/YR.

AS BUILT INFORMATION		BENCH MARKS		SURVEY INFORMATION		ENGINEER'S SEAL	
CONTRACTOR	DATE			FIELD NOTES	DATE		
WORKED BY	DATE			BY			
INSPECTOR'S ACCEPTANCE BY	DATE			NO.			
VERIFICATION BY	DATE						
DRAWINGS CORRECTED BY	DATE						
MICRO-FILM INFORMATION	DATE						
RECORDED BY	NO.						

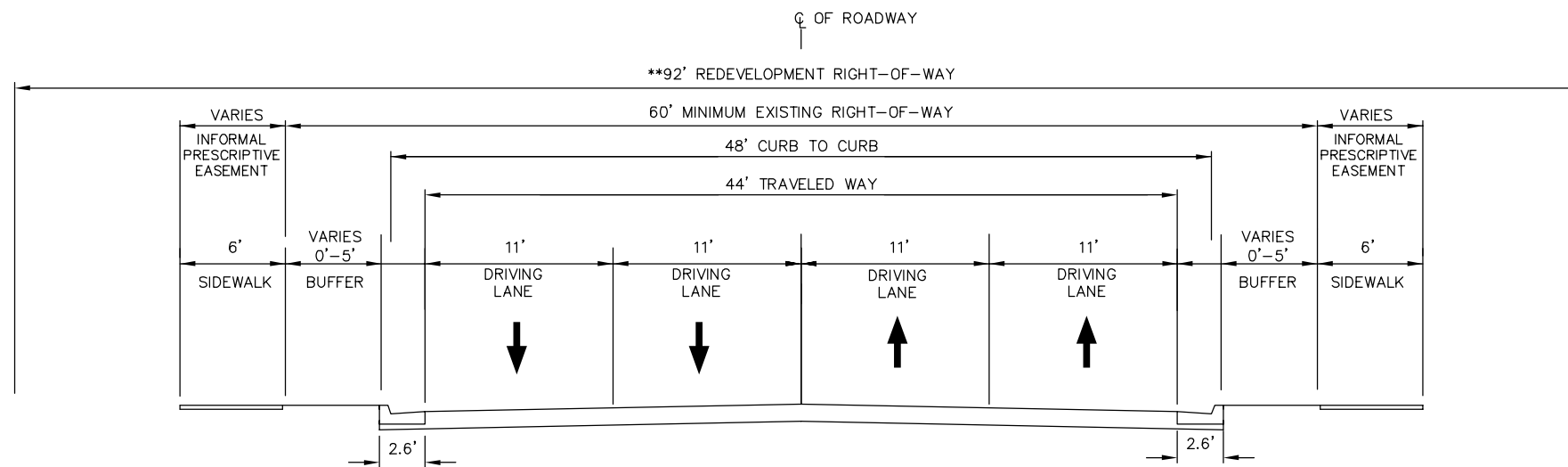
**PRELIMINARY
NOT FOR CONSTRUCTION**

NO.	DATE	REMARKS	BY

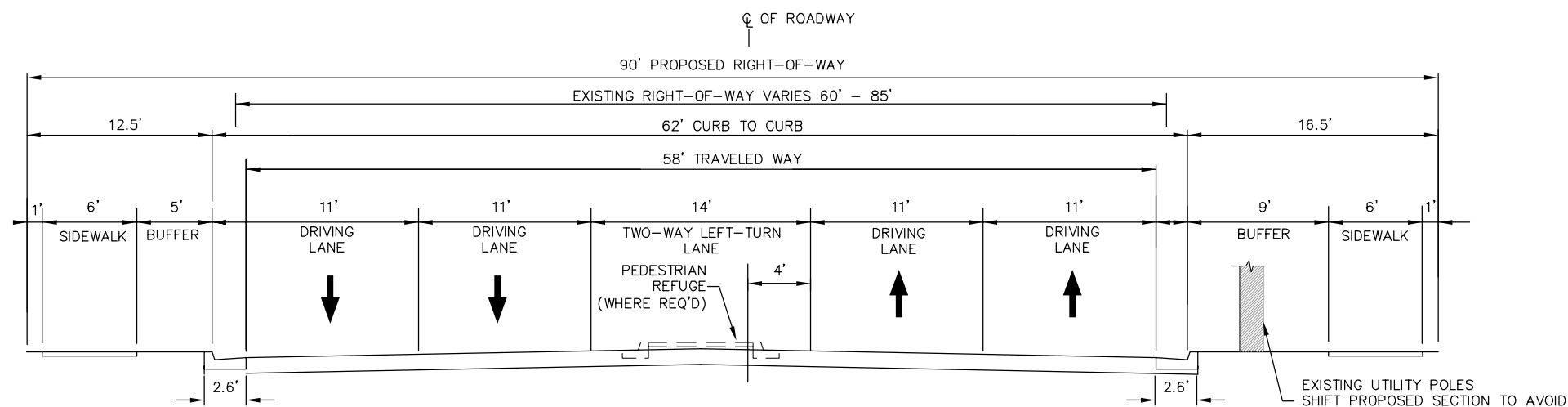
DESIGNED BY	DATE	DESIGN
DGS	11/24/14	
DRAWN BY	DATE	
DGS	11/24/14	
CHECKED BY	DATE	
JEH	11/24/14	



INTERIM TYPICAL SECTION 4
FREEMAN AVE. TO BELLROSE AVE.



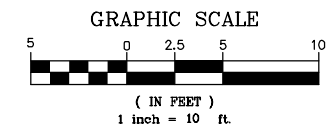
INTERIM TYPICAL SECTION 5
MENAUL BLVD. TO CLAREMONT RD.
MILDRED AVE. TO CANDELARIA BLVD.
MESCALERO RD. TO SAN CLEMENTE RD.



PROPOSED TYPICAL SECTION 6
GRIEGOS RD. TO MONTANO RD.

NOTE: TYPICAL SECTIONS 3 THRU 5 ARE FOR INTERIM CONSTRUCTION UNTIL REDEVELOPMENT ALONG THE CORRIDOR OCCURS, AND THE PROPOSED ULTIMATE TYPICAL SECTION CAN BE IMPLEMENTED.

** REDEVELOPMENT RIGHT-OF-WAY INDICATES THE FULL WIDTH OF RIGHT-OF-WAY REQUIRED TO CONSTRUCT THE RECOMMENDED TYPICAL SECTION. SEE SHEET 6 FOR PROPOSED ULTIMATE TYPICAL SECTION.



PARSONS BRINCKERHOFF

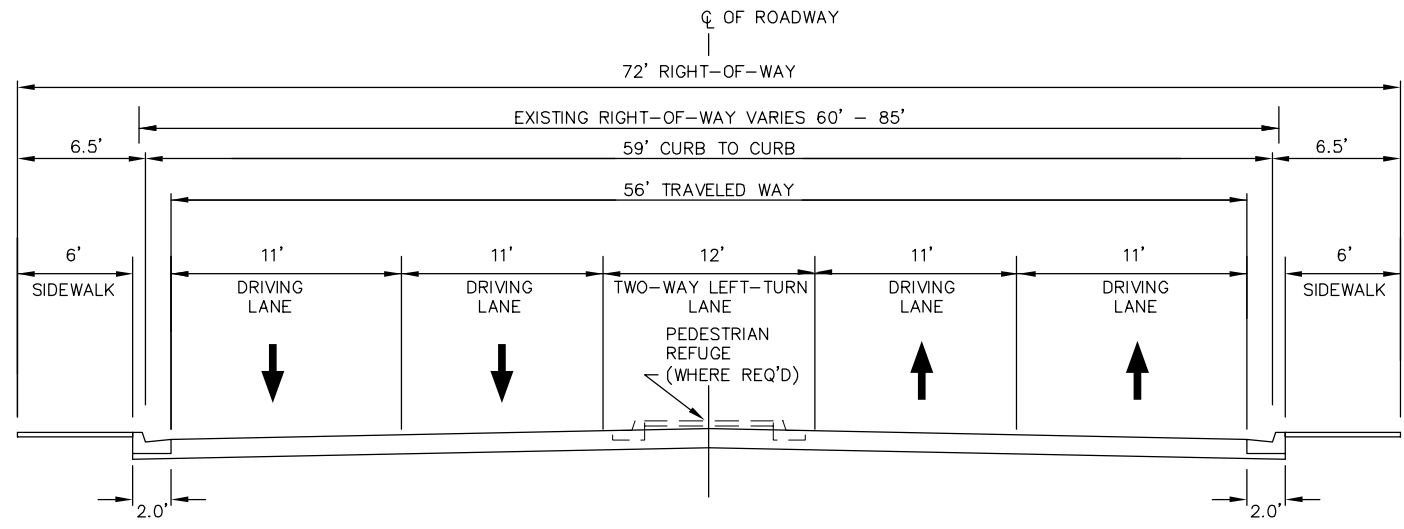
CITY OF ALBUQUERQUE
DEPARTMENT OF MUNICIPAL DEVELOPMENT
TRANSPORTATION DIVISION
NORTH FOURTH STREET REDEVELOPMENT STUDY
MOUNTAIN RD. TO CAMINO ESPANOL
PROPOSED TYPICAL SECTIONS

DESIGN REVIEW COMMITTEE	CITY ENGINEER APPROVAL	MO./DAY/YR.	MO./DAY/YR.

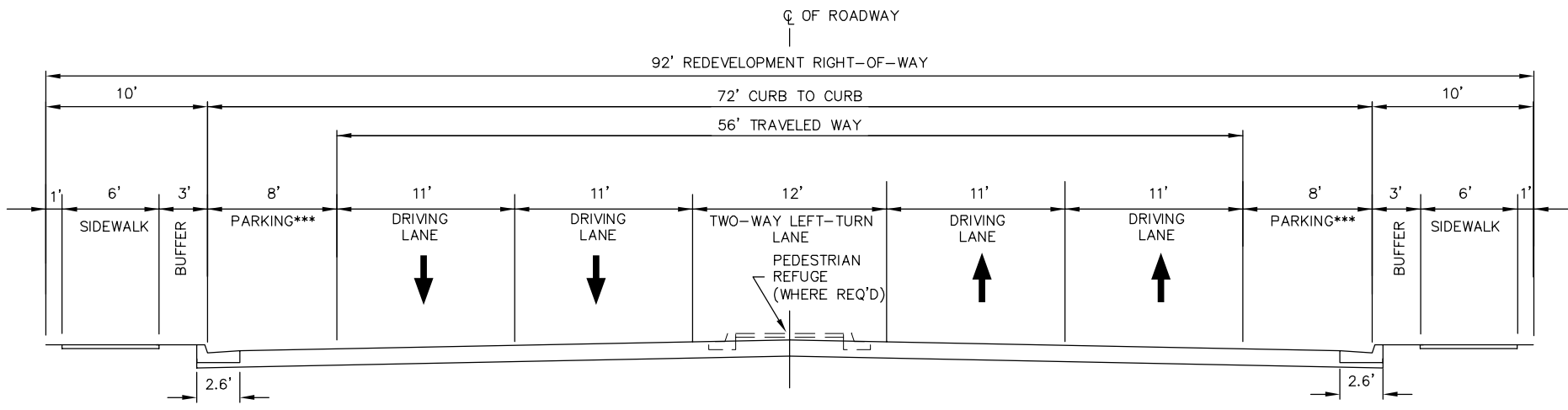
City Project No. COA 5878.91 Zone Map No. Sheet 5 of 28

AS BUILT INFORMATION		BENCH MARKS		SURVEY INFORMATION		ENGINEER'S SEAL	
CONTRACTOR	DATE			FIELD NOTES	NO.	BY	REMARKS
WORKED BY	DATE						
INSPECTOR'S ACCEPTANCE BY	DATE						
VERIFICATION BY	DATE						
DRAWINGS CORRECTED BY	DATE						
MICRO-FILM INFORMATION	DATE						
RECORDED BY	NO.						

**PRELIMINARY
NOT FOR CONSTRUCTION**

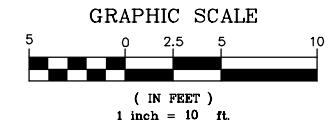


PROPOSED TYPICAL SECTION 7
MONTANO RD. TO CAMINO ESPANOL



PROPOSED ULTIMATE TYPICAL SECTION
I-40 TO GRIEGOS RD.

*** PARKING AISLE AT DISCRETION OF PROPERTY OWNER. MAY BE ELIMINATED OR CONVERTED TO BUFFER/LANDSCAPING.



PARSONS BRINCKERHOFF

CITY OF ALBUQUERQUE
DEPARTMENT OF MUNICIPAL DEVELOPMENT
TRANSPORTATION DIVISION

NORTH FOURTH STREET REDEVELOPMENT STUDY
MOUNTAIN RD. TO CAMINO ESPANOL
PROPOSED TYPICAL SECTIONS

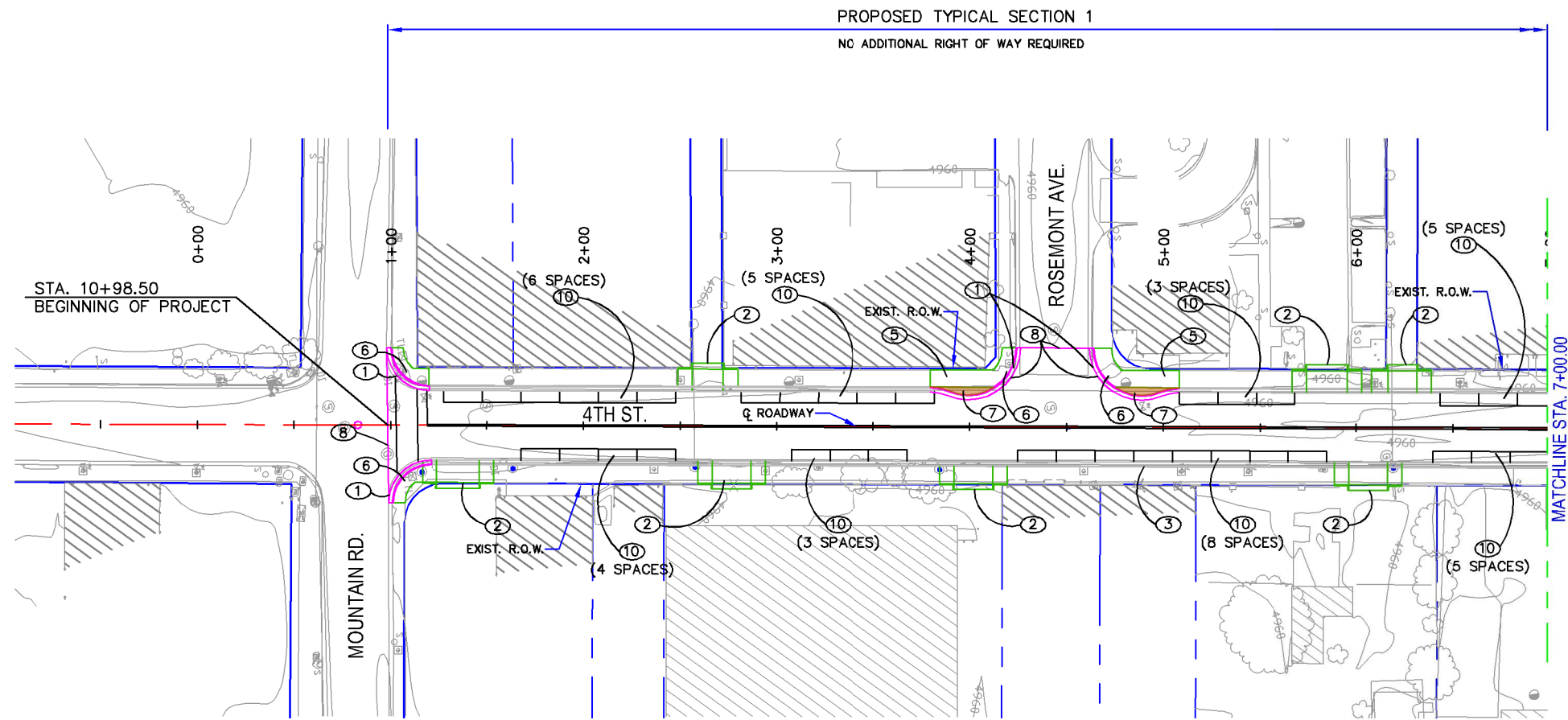
DESIGN REVIEW COMMITTEE	CITY ENGINEER APPROVAL	MO./DAY/YR.	MO./DAY/YR.

City Project No. COA 5878.91 Zone Map No. Sheet 6 of 28

ENGINEER'S SEAL		SURVEY INFORMATION		BENCH MARKS		AS BUILT INFORMATION	
NO.	DATE	NO.	DATE	CONTRACTOR	CONTRACTOR	WORKED BY	DATE
						INSPECTOR'S ACCEPTANCE BY	DATE
						VERIFICATION BY	DATE
						DRAWINGS CORRECTED BY	DATE
						MICRO-FILM INFORMATION	DATE
						RECORDED BY	DATE
							NO.

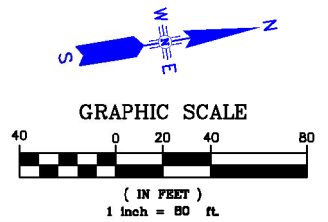
**PRELIMINARY
NOT FOR CONSTRUCTION**

NO.	DATE	REMARKS	BY
	11/24/14	DESIGN	DGS
	11/24/14		DGS
	11/24/14		JEH



- KEYED NOTES:**
- ① NEW STANDARD CURB & GUTTER, SEE COA STD. DWG. 2415A.
 - ② NEW ADA COMPLIANT DRIVEPAD, SEE DETAIL SHT. 7
 - ③ REMOVE EXISTING DRIVEPAD
 - ④ NEW 6" WIDE CONCRETE SIDEWALK SEE COA STD. DWG. 2430
 - ⑤ NEW 9" WIDE CONCRETE SIDEWALK SEE COA STD. DWG. 2430
 - ⑥ NEW ADA COMPLIANT CURB RAMP SEE COA STD. DWG. 2441
 - ⑦ NEW LANDSCAPE AREA
 - ⑧ SAWCUT EXISTING ASPHALT
 - ⑨ NEW FULL DEPTH ASPHALT SEE COA STD. DWG. 2407
 - ⑩ PARALLEL PARKING SPACE 8' WIDE X 20' LONG
 - ⑪ RELOCATE EXISTING PNM POLE

- LEGEND:**
- PROPOSED CURB & GUTTER
 - PROPOSED SIDEWALK/DRIVEPAD
 - / / PROPOSED ASPHALT
 - PROPOSED BUFFER



PARSONS BRINCKERHOFF

CITY OF ALBUQUERQUE
 DEPARTMENT OF MUNICIPAL DEVELOPMENT
 TRANSPORTATION DIVISION
 NORTH FOURTH STREET
 MOUNTAIN ROAD TO CAMINO ESPANOL
 15% ROADWAY PLANS

DESIGN REVIEW COMMITTEE	CITY ENGINEER APPROVAL	MO./DAY/YR.	MO./DAY/YR.

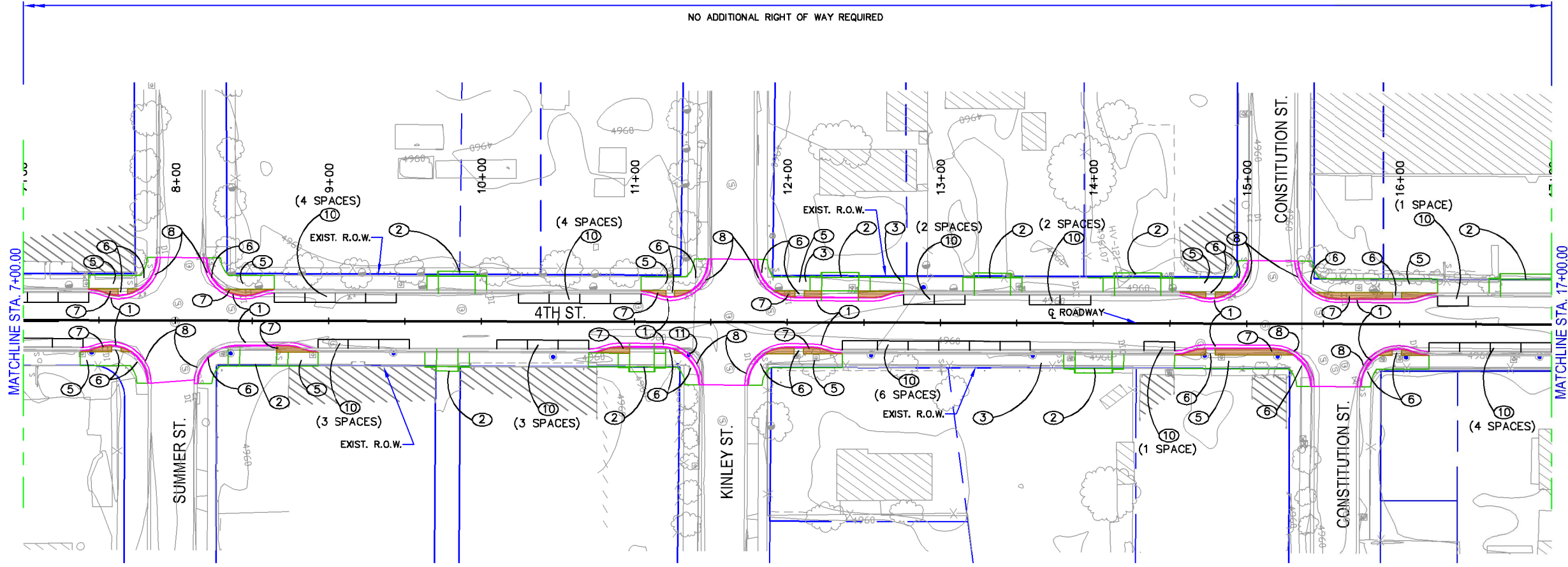
City Project No. COA 5878.91 Zone Map No. Sheet 8 of 28

AS BUILT INFORMATION		BENCH MARKS		SURVEY INFORMATION		ENGINEER'S SEAL	
CONTRACTOR	DATE	NO.	DATE	NO.	DATE	NO.	DATE

**PRELIMINARY
NOT FOR CONSTRUCTION**

DESIGNED BY	DGS	DATE	11/24/14
DRAWN BY	DGS	DATE	11/24/14
CHECKED BY	JEH	DATE	11/24/14

PROPOSED TYPICAL SECTION 1
NO ADDITIONAL RIGHT OF WAY REQUIRED

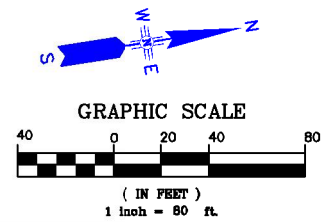


KEYED NOTES:

- ① NEW STANDARD CURB & GUTTER, SEE COA STD. DWG. 2415A.
- ② NEW ADA COMPLIANT DRIVEPAD, SEE DETAIL SHT. 7
- ③ REMOVE EXISTING DRIVEPAD
- ④ NEW 6' WIDE CONCRETE SIDEWALK SEE COA STD. DWG. 2430
- ⑤ NEW 9' WIDE CONCRETE SIDEWALK SEE COA STD. DWG. 2430
- ⑥ NEW ADA COMPLIANT CURB RAMP SEE COA STD. DWG. 2441
- ⑦ NEW LANDSCAPE AREA
- ⑧ SAWCUT EXISTING ASPHALT
- ⑨ NEW FULL DEPTH ASPHALT SEE COA STD. DWG. 2407
- ⑩ PARALLEL PARKING SPACE 8' WIDE X 20' LONG
- ⑪ RELOCATE EXISTING PNM POLE

LEGEND:

- PROPOSED CURB & GUTTER
- PROPOSED SIDEWALK/DRIVEPAD
- PROPOSED ASPHALT
- PROPOSED BUFFER



PARSONS BRINCKERHOFF

CITY OF ALBUQUERQUE
DEPARTMENT OF MUNICIPAL DEVELOPMENT
TRANSPORTATION DIVISION
NORTH FOURTH STREET
MOUNTAIN ROAD TO CAMINO ESPANOL
15% ROADWAY PLANS

DESIGN REVIEW COMMITTEE	CITY ENGINEER APPROVAL	MO./DAY/YR.	MO./DAY/YR.

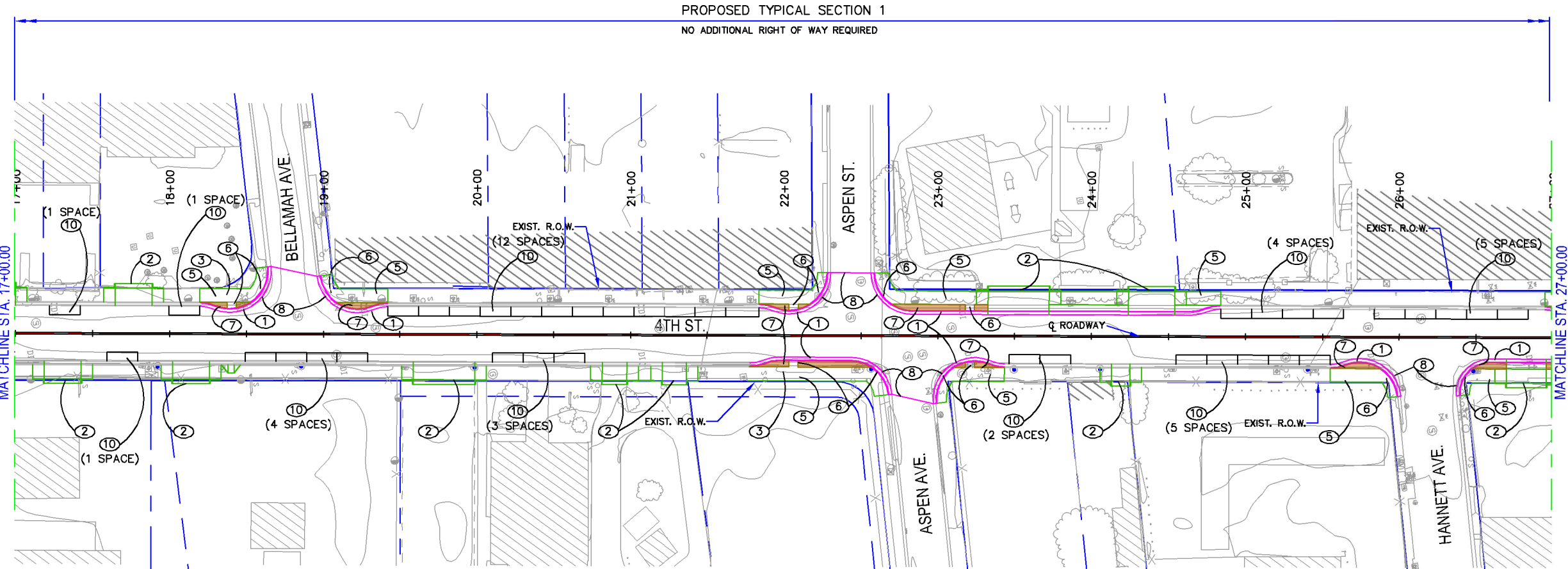
City Project No. COA 5878.91 Zone Map No. Sheet 9 of 28

AS BUILT INFORMATION		BENCH MARKS		SURVEY INFORMATION		ENGINEER'S SEAL	
CONTRACTOR	DATE	NO.	DATE	NO.	DATE	NO.	DATE

**PRELIMINARY
NOT FOR CONSTRUCTION**

NO.	DATE	REMARKS	BY

DESIGNED BY	DATE	CHECKED BY	DATE
DGS	11/24/14	JEH	11/24/14
DGS	11/24/14		



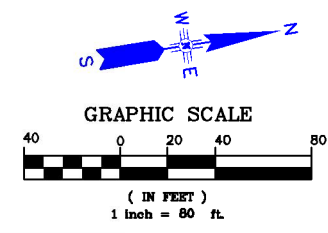
MATCHLINE STA. 17+00.00

MATCHLINE STA. 27+00.00

PROPOSED TYPICAL SECTION 1
NO ADDITIONAL RIGHT OF WAY REQUIRED

- KEYED NOTES:**
- ① NEW STANDARD CURB & GUTTER, SEE COA STD. DWG. 2415A.
 - ② NEW ADA COMPLIANT DRIVEPAD, SEE DETAIL SHT. 7
 - ③ REMOVE EXISTING DRIVEPAD
 - ④ NEW 6" WIDE CONCRETE SIDEWALK SEE COA STD. DWG. 2430
 - ⑤ NEW 9" WIDE CONCRETE SIDEWALK SEE COA STD. DWG. 2430
 - ⑥ NEW ADA COMPLIANT CURB RAMP SEE COA STD. DWG. 2441
 - ⑦ NEW LANDSCAPE AREA
 - ⑧ SAWCUT EXISTING ASPHALT
 - ⑨ NEW FULL DEPTH ASPHALT SEE COA STD. DWG. 2407
 - ⑩ PARALLEL PARKING SPACE 8' WIDE X 20' LONG
 - ⑪ RELOCATE EXISTING PNM POLE

- LEGEND:**
- PROPOSED CURB & GUTTER
 - PROPOSED SIDEWALK/DRIVEPAD
 - PROPOSED ASPHALT
 - PROPOSED BUFFER



PARSONS BRINCKERHOFF

CITY OF ALBUQUERQUE
DEPARTMENT OF MUNICIPAL DEVELOPMENT
TRANSPORTATION DIVISION
NORTH FOURTH STREET
MOUNTAIN ROAD TO CAMINO ESPANOL
15% ROADWAY PLANS

DESIGNED BY	DGS	DATE	11/24/14
DRAWN BY	DGS	DATE	11/24/14
CHECKED BY	JEH	DATE	11/24/14

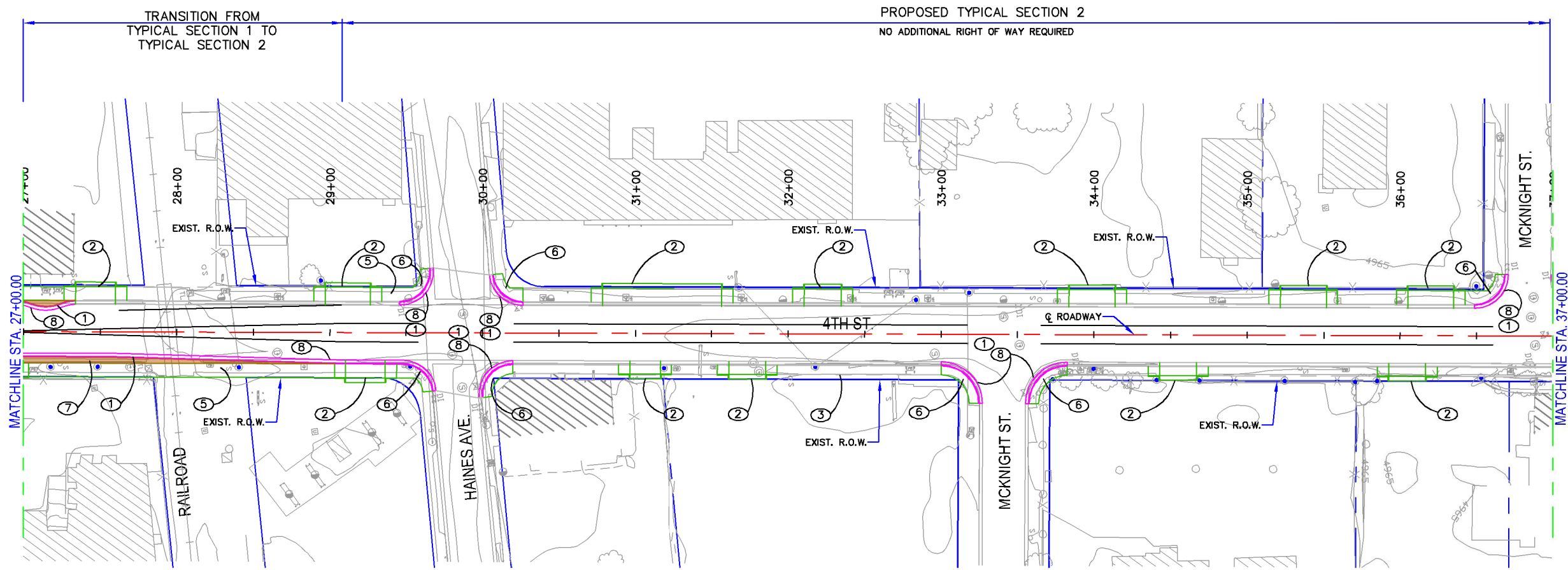
DESIGN REVIEW COMMITTEE CITY ENGINEER APPROVAL

NO.	DATE	REMARKS	BY

City Project No. COA 5878.91 Zone Map No. Sheet 10 of 28

AS BUILT INFORMATION		BENCH MARKS		SURVEY INFORMATION		ENGINEER'S SEAL	
CONTRACTOR	DATE			NO.	BY		

**PRELIMINARY
NOT FOR CONSTRUCTION**

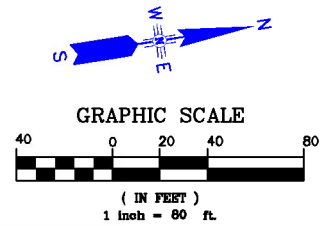


KEYED NOTES:

- ① NEW STANDARD CURB & GUTTER, SEE COA STD. DWG. 2415A.
- ② NEW ADA COMPLIANT DRIVEPAD, SEE DETAIL SHT. 7
- ③ REMOVE EXISTING DRIVEPAD
- ④ NEW 6" WIDE CONCRETE SIDEWALK SEE COA STD. DWG. 2430
- ⑤ NEW 9" WIDE CONCRETE SIDEWALK SEE COA STD. DWG. 2430
- ⑥ NEW ADA COMPLIANT CURB RAMP SEE COA STD. DWG. 2441
- ⑦ NEW LANDSCAPE AREA
- ⑧ SAWCUT EXISTING ASPHALT
- ⑨ NEW FULL DEPTH ASPHALT SEE COA STD. DWG. 2407
- ⑩ PARALLEL PARKING SPACE 8' WIDE X 20' LONG
- ⑪ RELOCATE EXISTING PNM POLE

LEGEND:

- PROPOSED CURB & GUTTER
- PROPOSED SIDEWALK/DRIVEPAD
- PROPOSED ASPHALT
- PROPOSED BUFFER



PARSONS BRINCKERHOFF

CITY OF ALBUQUERQUE
 DEPARTMENT OF MUNICIPAL DEVELOPMENT
 TRANSPORTATION DIVISION
 NORTH FOURTH STREET
 MOUNTAIN ROAD TO CAMINO ESPANOL
 15% ROADWAY PLANS

DESIGN REVIEW COMMITTEE	CITY ENGINEER APPROVAL	MO./DAY/YR.	MO./DAY/YR.

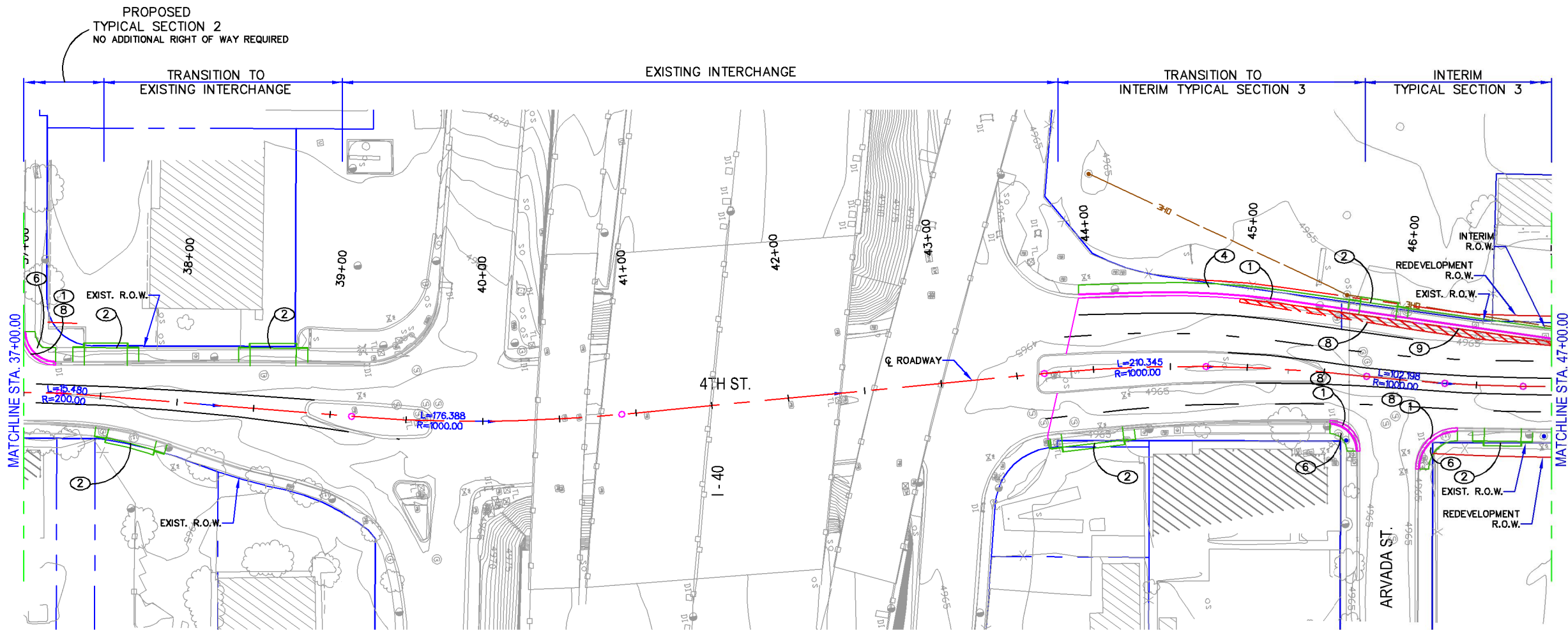
City Project No. COA 5878.91 Zone Map No. Sheet 11 of 28

AS BUILT INFORMATION		BENCH MARKS		SURVEY INFORMATION		ENGINEER'S SEAL	
CONTRACTOR	DATE	NO.	DATE	NO.	DATE	NO.	DATE

**PRELIMINARY
NOT FOR CONSTRUCTION**

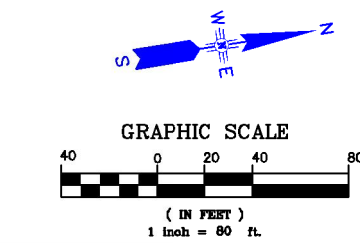
NO.	DATE	REMARKS	BY

DESIGNED BY	DATE	DESIGN
DGS	11/24/14	
DRAWN BY	DATE	
DGS	11/24/14	
CHECKED BY	DATE	
JEH	11/24/14	



- KEYED NOTES:**
- ① NEW STANDARD CURB & GUTTER, SEE COA STD. DWG. 2415A.
 - ② NEW ADA COMPLIANT DRIVEPAD, SEE DETAIL SHT. 7
 - ③ REMOVE EXISTING DRIVEPAD
 - ④ NEW 6" WIDE CONCRETE SIDEWALK SEE COA STD. DWG. 2430
 - ⑤ NEW 9" WIDE CONCRETE SIDEWALK SEE COA STD. DWG. 2430
 - ⑥ NEW ADA COMPLIANT CURB RAMP SEE COA STD. DWG. 2441
 - ⑦ NEW LANDSCAPE AREA
 - ⑧ SAWCUT EXISTING ASPHALT
 - ⑨ NEW FULL DEPTH ASPHALT SEE COA STD. DWG. 2407
 - ⑩ PARALLEL PARKING SPACE 8' WIDE X 20' LONG
 - ⑪ RELOCATE EXISTING PNM POLE

- LEGEND:**
- PROPOSED CURB & GUTTER
 - PROPOSED SIDEWALK/DRIVEPAD
 - PROPOSED ASPHALT
 - PROPOSED BUFFER



PARSONS BRINCKERHOFF

CITY OF ALBUQUERQUE
 DEPARTMENT OF MUNICIPAL DEVELOPMENT
 TRANSPORTATION DIVISION
 NORTH FOURTH STREET
 MOUNTAIN ROAD TO CAMINO ESPANOL
 15% ROADWAY PLANS

DESIGN REVIEW COMMITTEE	CITY ENGINEER APPROVAL	MO./DAY/YR.	MO./DAY/YR.

City Project No. COA 5878.91 Zone Map No. Sheet 12 of 28

AS BUILT INFORMATION	
CONTRACTOR	DATE
WORK PERFORMED BY	DATE
INSPECTOR'S ACCEPTANCE BY	DATE
FIELD VERIFICATION BY	DATE
DRAWINGS CORRECTED BY	DATE
MICRO-FILM INFORMATION	DATE
RECORDED BY	NO.

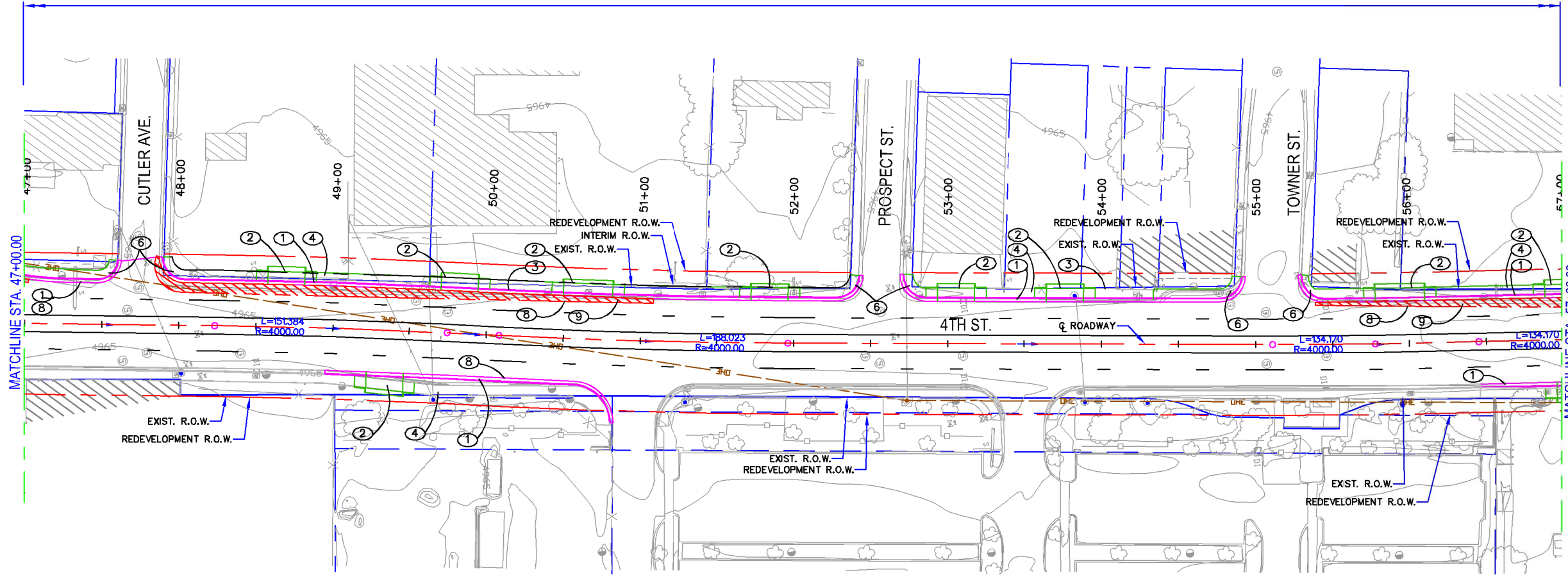
SURVEY INFORMATION	
FIELD NOTES	DATE
NO.	
BY	

ENGINEER'S SEAL	
NO.	DATE

**PRELIMINARY
NOT FOR CONSTRUCTION**

REMARKS	BY	DATE
DESIGN		11/24/14
DGS		11/24/14
JEH		11/24/14

INTERIM TYPICAL SECTION 3

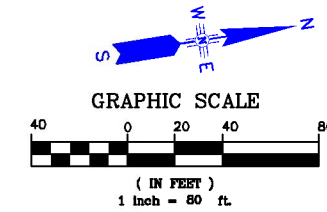


KEYED NOTES:

- ① NEW STANDARD CURB & GUTTER, SEE COA STD. DWG. 2415A.
- ② NEW ADA COMPLIANT DRIVEPAD, SEE DETAIL SHT. 7
- ③ REMOVE EXISTING DRIVEPAD
- ④ NEW 6" WIDE CONCRETE SIDEWALK SEE COA STD. DWG. 2430
- ⑤ NEW 9" WIDE CONCRETE SIDEWALK SEE COA STD. DWG. 2430
- ⑥ NEW ADA COMPLIANT CURB RAMP SEE COA STD. DWG. 2441
- ⑦ NEW LANDSCAPE AREA
- ⑧ SAWCUT EXISTING ASPHALT
- ⑨ NEW FULL DEPTH ASPHALT SEE COA STD. DWG. 2407
- ⑩ PARALLEL PARKING SPACE 8' WIDE X 20' LONG
- ⑪ RELOCATE EXISTING PNM POLE

LEGEND:

- PROPOSED CURB & GUTTER
- PROPOSED SIDEWALK/DRIVEPAD
- PROPOSED ASPHALT
- PROPOSED BUFFER



PARSONS BRINCKERHOFF

CITY OF ALBUQUERQUE
 DEPARTMENT OF MUNICIPAL DEVELOPMENT
 TRANSPORTATION DIVISION
 NORTH FOURTH STREET
 MOUNTAIN ROAD TO CAMINO ESPANOL
 15% ROADWAY PLANS

DESIGN REVIEW COMMITTEE	CITY ENGINEER APPROVAL	MO./DAY/YR.	MO./DAY/YR.

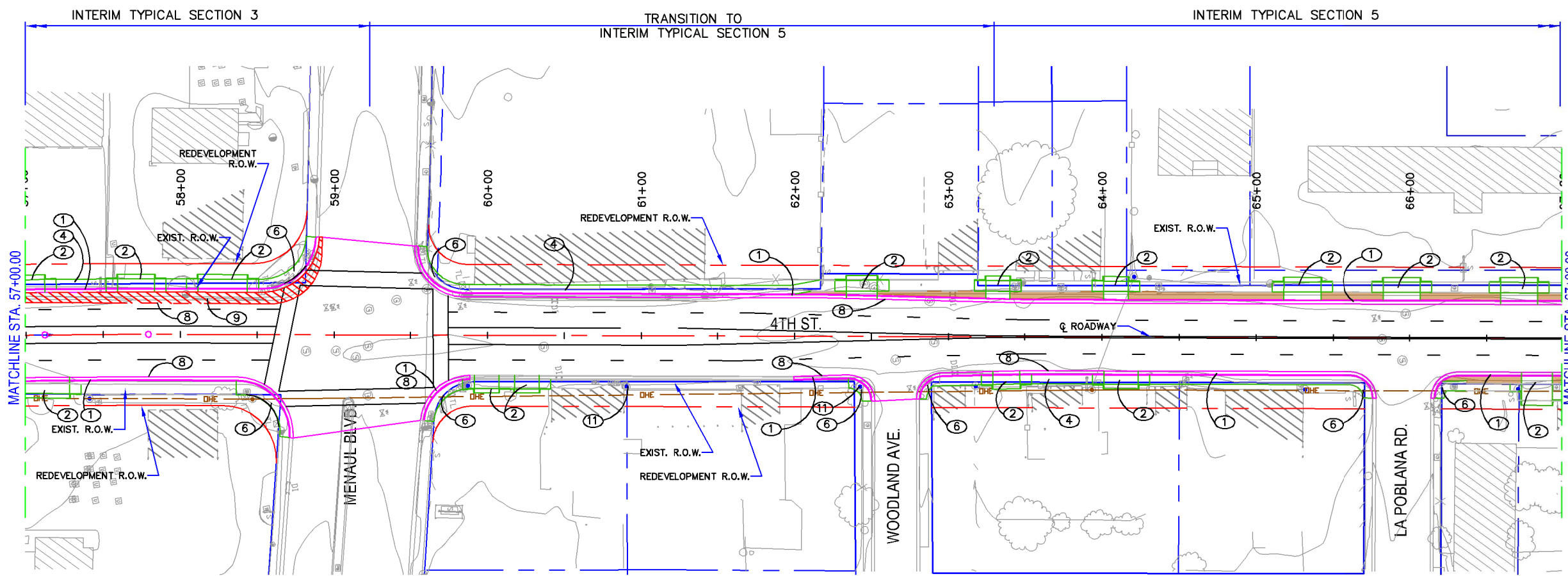
City Project No. COA 5878.91 Zone Map No. Sheet 13 of 28

AS BUILT INFORMATION		BENCH MARKS		SURVEY INFORMATION		ENGINEER'S SEAL	
CONTRACTOR	DATE	NO.	DATE	NO.	DATE	NO.	DATE

**PRELIMINARY
NOT FOR CONSTRUCTION**

NO.	DATE	REMARKS	BY

DESIGNED BY	DATE	DESIGN
DGS	11/24/14	
DRAWN BY	DATE	
DGS	11/24/14	
CHECKED BY	DATE	
JEH	11/24/14	

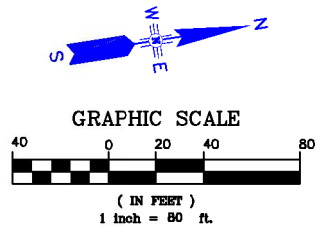


KEYED NOTES:

- ① NEW STANDARD CURB & GUTTER, SEE COA STD. DWG. 2415A.
- ② NEW ADA COMPLIANT DRIVEPAD, SEE DETAIL SHT. 7
- ③ REMOVE EXISTING DRIVEPAD
- ④ NEW 6' WIDE CONCRETE SIDEWALK SEE COA STD. DWG. 2430
- ⑤ NEW 9' WIDE CONCRETE SIDEWALK SEE COA STD. DWG. 2430
- ⑥ NEW ADA COMPLIANT CURB RAMP SEE COA STD. DWG. 2441
- ⑦ NEW LANDSCAPE AREA
- ⑧ SAWCUT EXISTING ASPHALT
- ⑨ NEW FULL DEPTH ASPHALT SEE COA STD. DWG. 2407
- ⑩ PARALLEL PARKING SPACE 8' WIDE X 20' LONG
- ⑪ RELOCATE EXISTING PNM POLE

LEGEND:

- PROPOSED CURB & GUTTER
- PROPOSED SIDEWALK/DRIVEPAD
- ▨ PROPOSED ASPHALT
- ▨ PROPOSED BUFFER



**PARSONS
BRINCKERHOFF**

CITY OF ALBUQUERQUE
DEPARTMENT OF MUNICIPAL DEVELOPMENT
TRANSPORTATION DIVISION
NORTH FOURTH STREET
MOUNTAIN ROAD TO CAMINO ESPANOL
15% ROADWAY PLANS

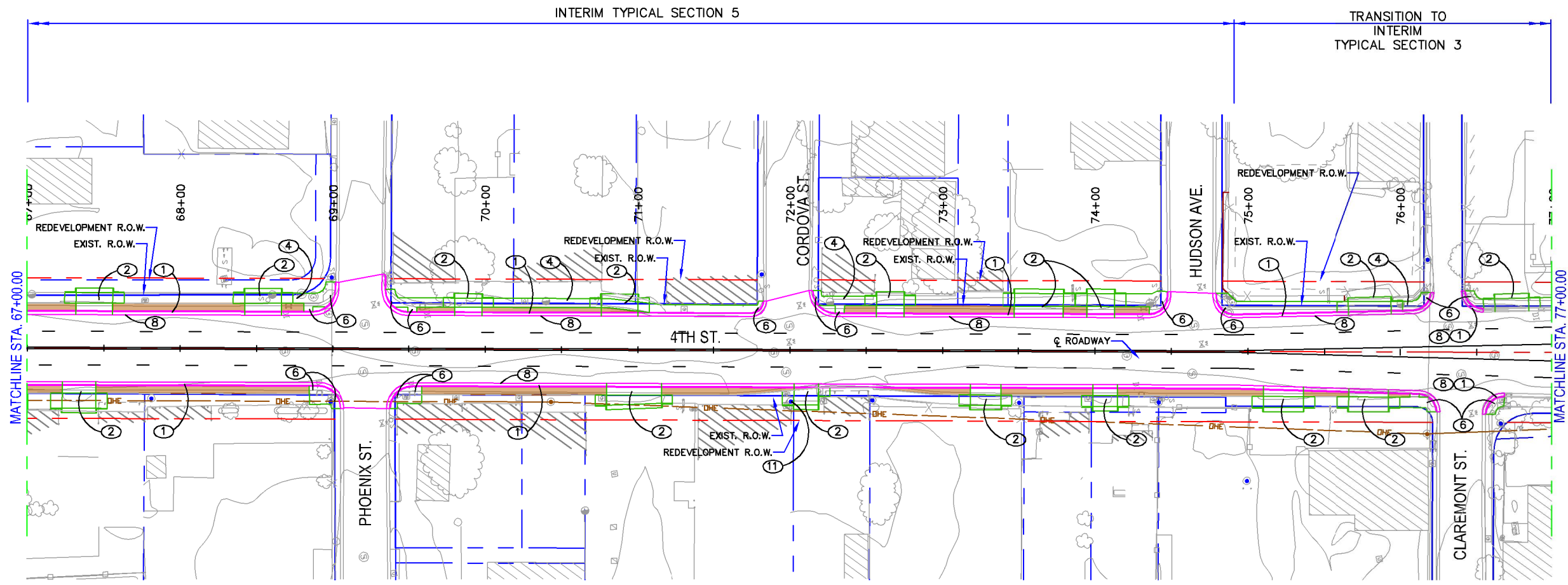
DESIGN REVIEW COMMITTEE	CITY ENGINEER APPROVAL	MO./DAY/YR.	MO./DAY/YR.

City Project No. COA 5878.91 Zone Map No. Sheet 14 of 28

AS BUILT INFORMATION		BENCH MARKS		SURVEY INFORMATION		ENGINEER'S SEAL	
CONTRACTOR	DATE	NO.	DATE	NO.	DATE	NO.	DATE

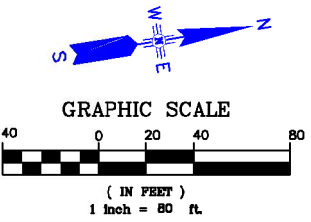
PRELIMINARY
NOT FOR CONSTRUCTION

DESIGNED BY	DATE	CHECKED BY	DATE
DGS	11/24/14	JEH	11/24/14
DGS	11/24/14	JEH	11/24/14



- KEYED NOTES:**
- ① NEW STANDARD CURB & GUTTER, SEE COA STD. DWG. 2415A.
 - ② NEW ADA COMPLIANT DRIVEPAD, SEE DETAIL SHT. 7
 - ③ REMOVE EXISTING DRIVEPAD
 - ④ NEW 6" WIDE CONCRETE SIDEWALK SEE COA STD. DWG. 2430
 - ⑤ NEW 9" WIDE CONCRETE SIDEWALK SEE COA STD. DWG. 2430
 - ⑥ NEW ADA COMPLIANT CURB RAMP SEE COA STD. DWG. 2441
 - ⑦ NEW LANDSCAPE AREA
 - ⑧ SAWCUT EXISTING ASPHALT
 - ⑨ NEW FULL DEPTH ASPHALT SEE COA STD. DWG. 2407
 - ⑩ PARALLEL PARKING SPACE 8' WIDE X 20' LONG
 - ⑪ RELOCATE EXISTING PNM POLE

- LEGEND:**
- PROPOSED CURB & GUTTER
 - PROPOSED SIDEWALK/DRIVEPAD
 - PROPOSED ASPHALT
 - PROPOSED BUFFER



PARSONS BRINCKERHOFF

CITY OF ALBUQUERQUE
 DEPARTMENT OF MUNICIPAL DEVELOPMENT
 TRANSPORTATION DIVISION
 NORTH FOURTH STREET
 MOUNTAIN ROAD TO CAMINO ESPANOL
 15% ROADWAY PLANS

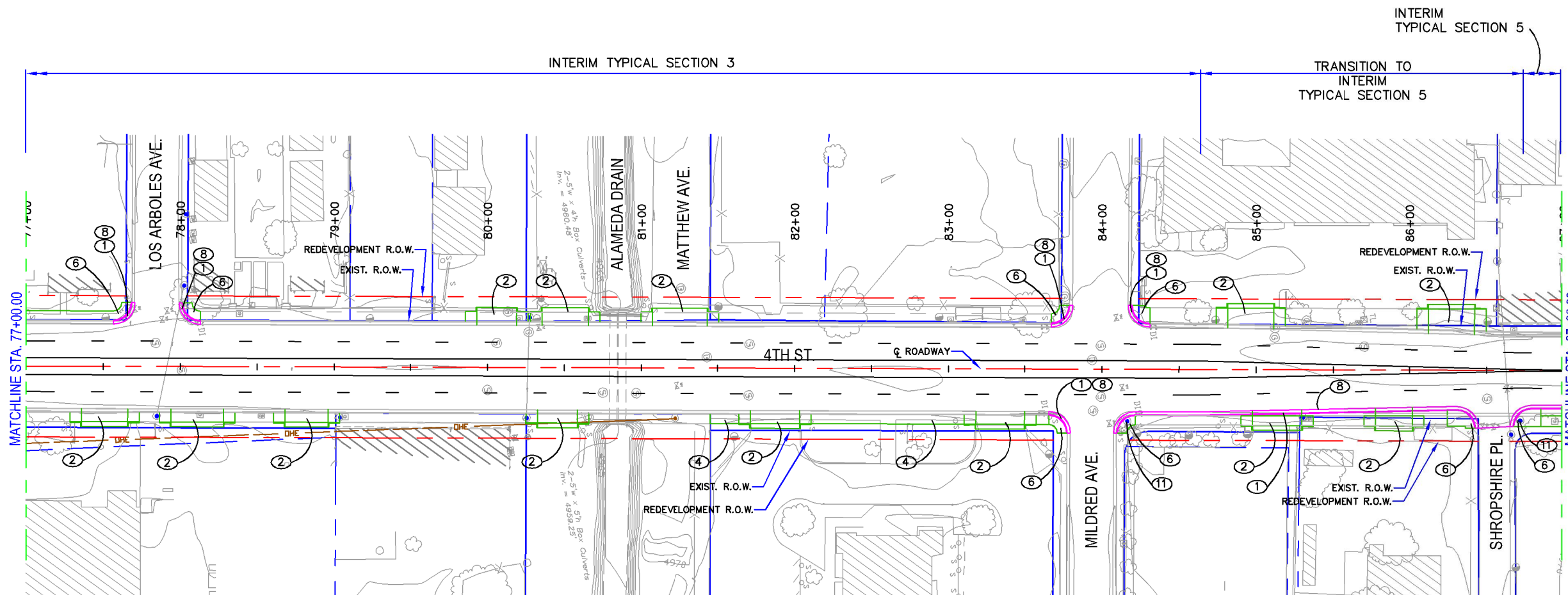
DESIGN REVIEW COMMITTEE	CITY ENGINEER APPROVAL	MO./DAY/YR.	MO./DAY/YR.

City Project No. COA 5878.91 Zone Map No. Sheet 15 of 28

AS BUILT INFORMATION		BENCH MARKS		SURVEY INFORMATION		ENGINEER'S SEAL	
CONTRACTOR	DATE			NO.	BY	NO.	DATE

**PRELIMINARY
NOT FOR CONSTRUCTION**

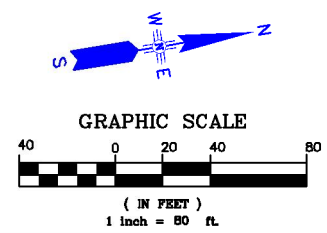
DESIGNED BY	DGS	DATE	11/24/14
DRAWN BY	DGS	DATE	11/24/14
CHECKED BY	JEH	DATE	11/24/14



NOTE: ALAMEDA DRAIN CULVERT NOT EXTENDED FOR INTERIM PROJECT. WIDENING WOULD BE REQUIRED TO IMPROVE SIDEWALKS. (EXISTING SIDEWALKS ARE 4' WIDE)

- KEYED NOTES:**
- ① NEW STANDARD CURB & GUTTER, SEE COA STD. DWG. 2415A.
 - ② NEW ADA COMPLIANT DRIVEPAD, SEE DETAIL SHT. 7
 - ③ REMOVE EXISTING DRIVEPAD
 - ④ NEW 6" WIDE CONCRETE SIDEWALK SEE COA STD. DWG. 2430
 - ⑤ NEW 9" WIDE CONCRETE SIDEWALK SEE COA STD. DWG. 2430
 - ⑥ NEW ADA COMPLIANT CURB RAMP SEE COA STD. DWG. 2441
 - ⑦ NEW LANDSCAPE AREA
 - ⑧ SAWCUT EXISTING ASPHALT
 - ⑨ NEW FULL DEPTH ASPHALT SEE COA STD. DWG. 2407
 - ⑩ PARALLEL PARKING SPACE 8' WIDE X 20' LONG
 - ⑪ RELOCATE EXISTING PNM POLE

- LEGEND:**
- PROPOSED CURB & GUTTER
 - PROPOSED SIDEWALK/DRIVEPAD
 - PROPOSED ASPHALT
 - PROPOSED BUFFER



PARSONS BRINCKERHOFF

CITY OF ALBUQUERQUE
DEPARTMENT OF MUNICIPAL DEVELOPMENT
TRANSPORTATION DIVISION
NORTH FOURTH STREET
MOUNTAIN ROAD TO CAMINO ESPANOL
15% ROADWAY PLANS

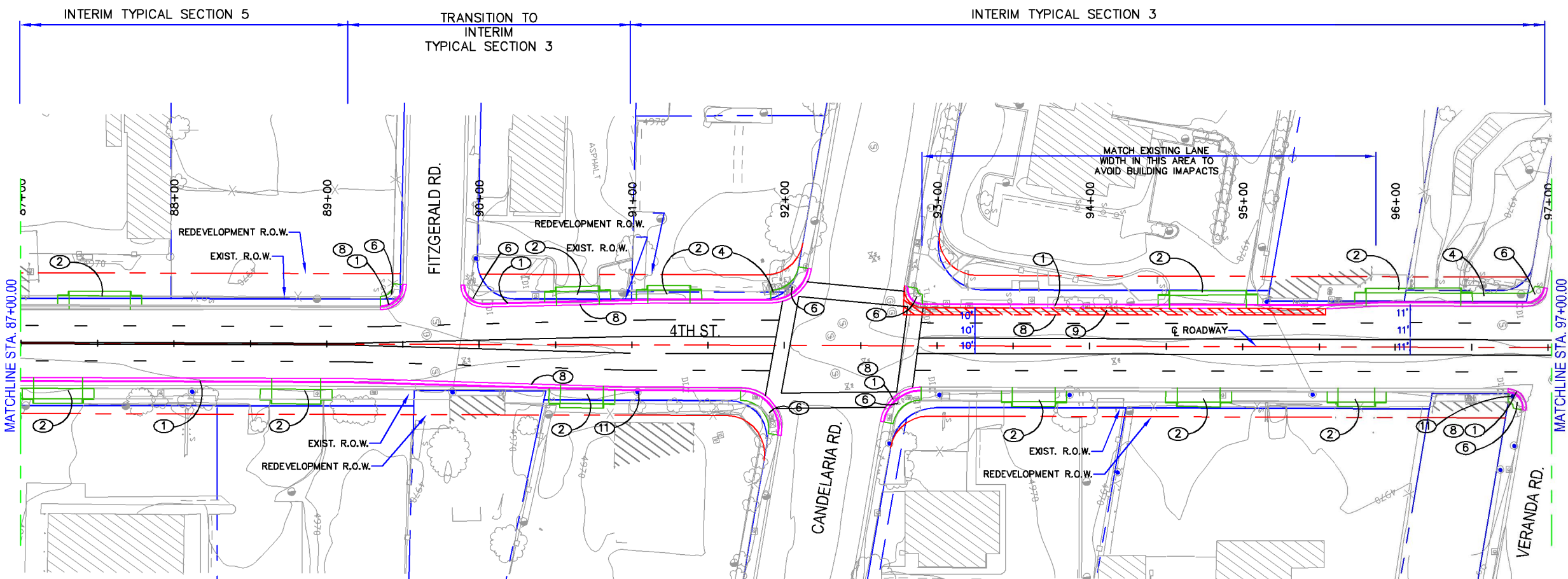
DESIGN REVIEW COMMITTEE	CITY ENGINEER APPROVAL	MO./DAY/YR.	MO./DAY/YR.

City Project No. COA 5878.91 Zone Map No. Sheet 16 of 28

ENGINEER'S SEAL		SURVEY INFORMATION		BENCH MARKS		AS BUILT INFORMATION	
NO.	BY	NO.	DATE	NO.	DATE	NO.	DATE

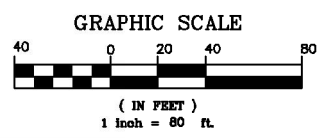
PRELIMINARY
NOT FOR CONSTRUCTION

DESIGNED BY	DATE	CHECKED BY	DATE
DGS	11/24/14	JEH	11/24/14
DGS	11/24/14	JEH	11/24/14



- KEYED NOTES:**
- ① NEW STANDARD CURB & GUTTER, SEE COA STD. DWG. 2415A.
 - ② NEW ADA COMPLIANT DRIVEPAD, SEE DETAIL SHT. 7
 - ③ REMOVE EXISTING DRIVEPAD
 - ④ NEW 6" WIDE CONCRETE SIDEWALK SEE COA STD. DWG. 2430
 - ⑤ NEW 9" WIDE CONCRETE SIDEWALK SEE COA STD. DWG. 2430
 - ⑥ NEW ADA COMPLIANT CURB RAMP SEE COA STD. DWG. 2441
 - ⑦ NEW LANDSCAPE AREA
 - ⑧ SAWCUT EXISTING ASPHALT
 - ⑨ NEW FULL DEPTH ASPHALT SEE COA STD. DWG. 2407
 - ⑩ PARALLEL PARKING SPACE 8' WIDE X 20' LONG
 - ⑪ RELOCATE EXISTING PNM POLE

- LEGEND:**
- PROPOSED CURB & GUTTER
 - PROPOSED SIDEWALK/DRIVEPAD
 - PROPOSED ASPHALT
 - PROPOSED BUFFER



PARSONS BRINCKERHOFF

CITY OF ALBUQUERQUE
 DEPARTMENT OF MUNICIPAL DEVELOPMENT
 TRANSPORTATION DIVISION
 NORTH FOURTH STREET
 MOUNTAIN ROAD TO CAMINO ESPANOL
 15% ROADWAY PLANS

DESIGN REVIEW COMMITTEE	CITY ENGINEER APPROVAL	MO./DAY/YR.	MO./DAY/YR.

City Project No. COA 5878.91 Zone Map No. Sheet 17 of 28

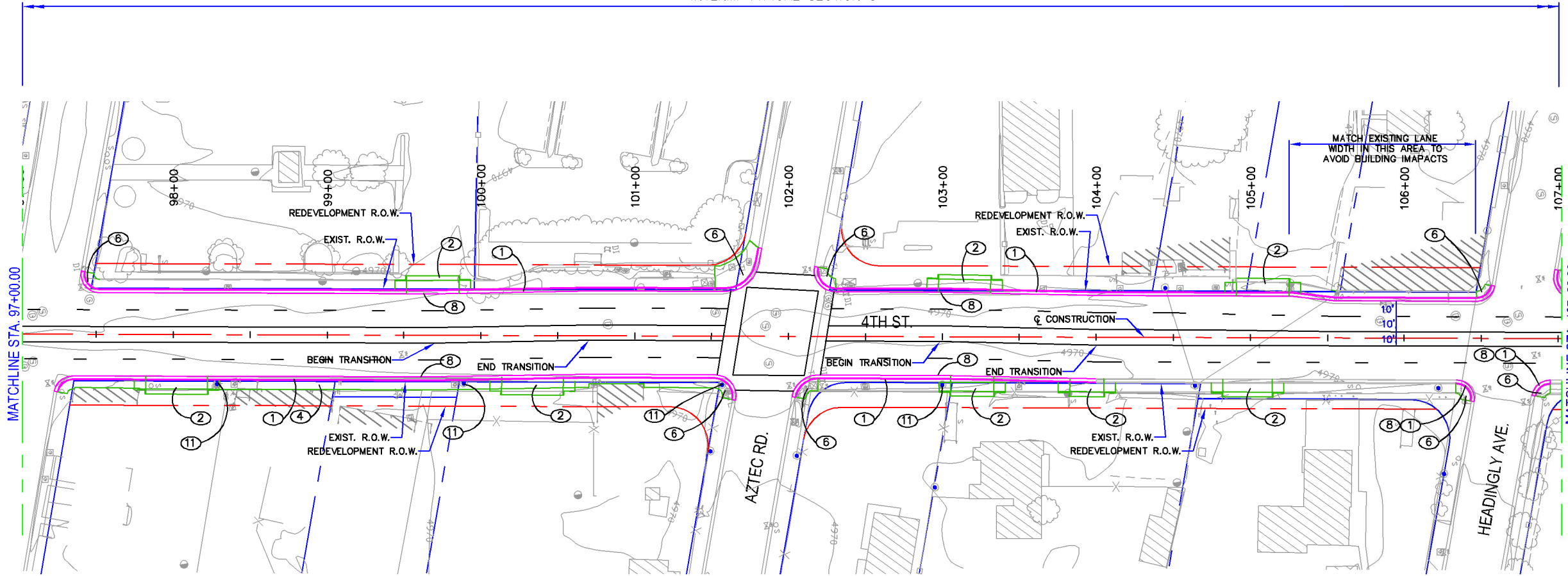
AS BUILT INFORMATION		BENCH MARKS		SURVEY INFORMATION		ENGINEER'S SEAL	
CONTRACTOR	DATE	NO.	DATE	NO.	DATE	NO.	DATE

**PRELIMINARY
NOT FOR CONSTRUCTION**

NO.	DATE	REMARKS	BY

DESIGNED BY	DATE	CHECKED BY	DATE
DGS	11/24/14	JEH	11/24/14
DGS	11/24/14		

INTERIM TYPICAL SECTION 3

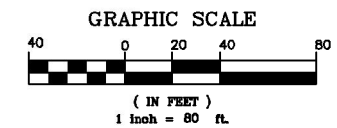


KEYED NOTES:

- ① NEW STANDARD CURB & GUTTER, SEE COA STD. DWG. 2415A.
- ② NEW ADA COMPLIANT DRIVEPAD, SEE DETAIL SH. 7
- ③ REMOVE EXISTING DRIVEPAD
- ④ NEW 6' WIDE CONCRETE SIDEWALK SEE COA STD. DWG. 2430
- ⑤ NEW 9' WIDE CONCRETE SIDEWALK SEE COA STD. DWG. 2430
- ⑥ NEW ADA COMPLIANT CURB RAMP SEE COA STD. DWG. 2441
- ⑦ NEW LANDSCAPE AREA
- ⑧ SAWCUT EXISTING ASPHALT
- ⑨ NEW FULL DEPTH ASPHALT SEE COA STD. DWG. 2407
- ⑩ PARALLEL PARKING SPACE 8' WIDE X 20' LONG
- ⑪ RELOCATE EXISTING PNM POLE

LEGEND:

- PROPOSED CURB & GUTTER
- PROPOSED SIDEWALK/DRIVEPAD
- PROPOSED ASPHALT
- PROPOSED BUFFER



PARSONS BRINCKERHOFF

CITY OF ALBUQUERQUE
 DEPARTMENT OF MUNICIPAL DEVELOPMENT
 TRANSPORTATION DIVISION
 NORTH FOURTH STREET
 MOUNTAIN ROAD TO CAMINO ESPANOL
 15% ROADWAY PLANS

DESIGN REVIEW COMMITTEE	CITY ENGINEER APPROVAL	MO./DAY/YR.	MO./DAY/YR.

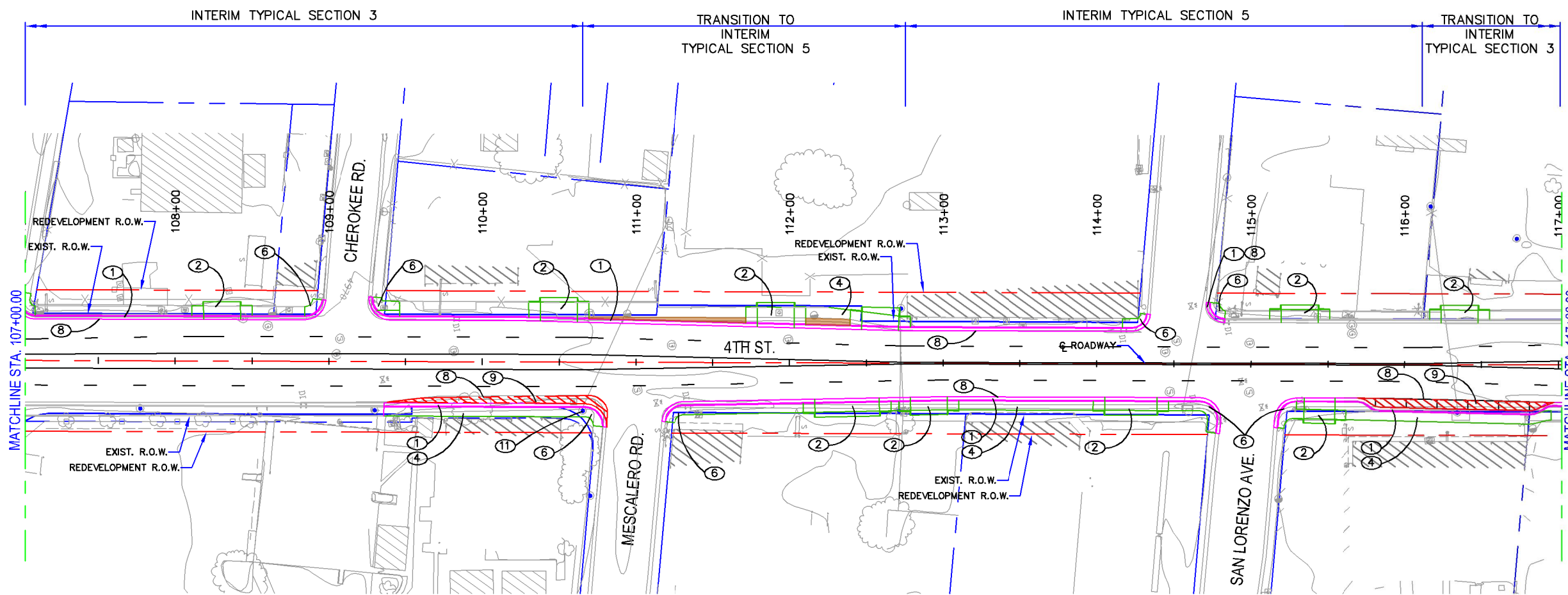
City Project No. COA 5878.91 Zone Map No. Sheet 18 of 28

AS BUILT INFORMATION		BENCH MARKS		SURVEY INFORMATION		ENGINEER'S SEAL	
CONTRACTOR	DATE			NO.	BY		

**PRELIMINARY
NOT FOR CONSTRUCTION**

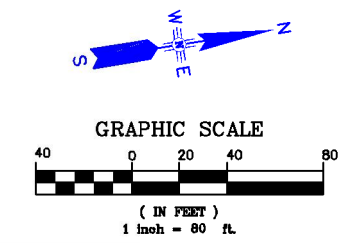
NO.	DATE	REMARKS	BY

DESIGNED BY	DATE	CHECKED BY	DATE
DGS	11/24/14	JEH	11/24/14
DGS	11/24/14		



- KEYED NOTES:**
- ① NEW STANDARD CURB & GUTTER, SEE COA STD. DWG. 2415A.
 - ② NEW ADA COMPLIANT DRIVEPAD, SEE DETAIL SHT. 7
 - ③ REMOVE EXISTING DRIVEPAD
 - ④ NEW 6" WIDE CONCRETE SIDEWALK SEE COA STD. DWG. 2430
 - ⑤ NEW 9" WIDE CONCRETE SIDEWALK SEE COA STD. DWG. 2430
 - ⑥ NEW ADA COMPLIANT CURB RAMP SEE COA STD. DWG. 2441
 - ⑦ NEW LANDSCAPE AREA
 - ⑧ SAWCUT EXISTING ASPHALT
 - ⑨ NEW FULL DEPTH ASPHALT SEE COA STD. DWG. 2407
 - ⑩ PARALLEL PARKING SPACE 8' WIDE X 20' LONG
 - ⑪ RELOCATE EXISTING PNM POLE

- LEGEND:**
- PROPOSED CURB & GUTTER
 - PROPOSED SIDEWALK/DRIVEPAD
 - PROPOSED ASPHALT
 - PROPOSED BUFFER



PARSONS BRINCKERHOFF

CITY OF ALBUQUERQUE
 DEPARTMENT OF MUNICIPAL DEVELOPMENT
 TRANSPORTATION DIVISION
 NORTH FOURTH STREET
 MOUNTAIN ROAD TO CAMINO ESPANOL
 15% ROADWAY PLANS

DESIGN REVIEW COMMITTEE	CITY ENGINEER APPROVAL	MO./DAY/YR.	MO./DAY/YR.

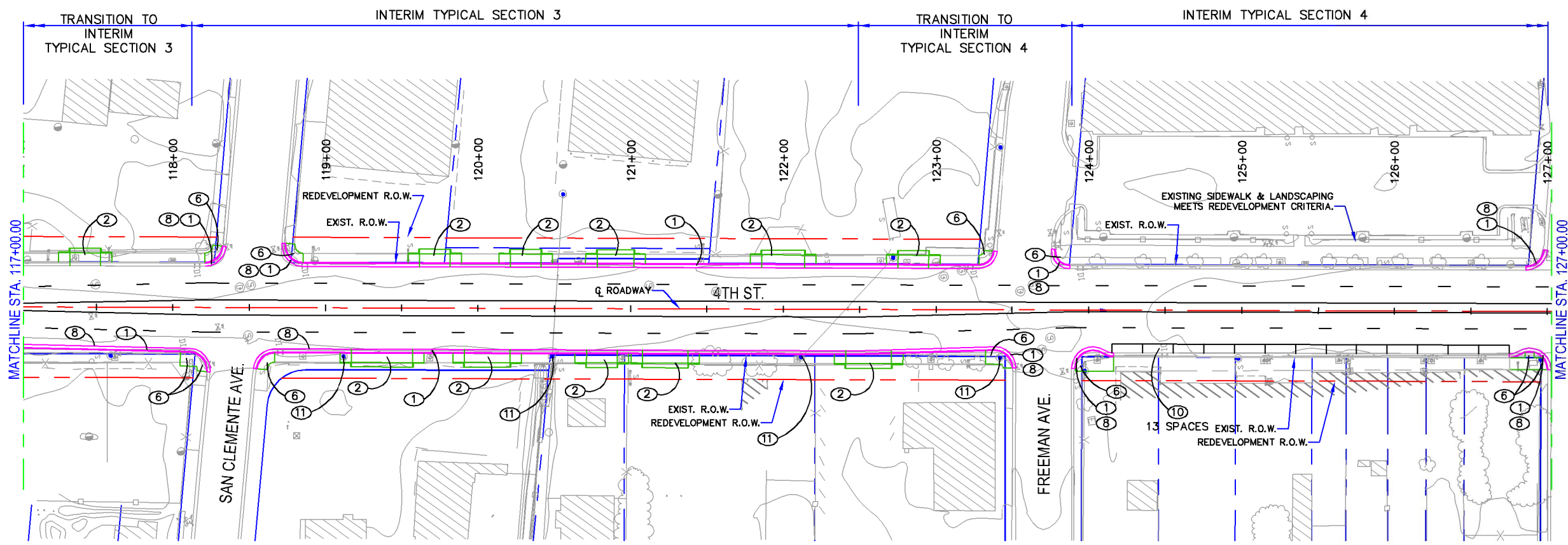
City Project No. COA 5878.91 Zone Map No. Sheet 19 of 28

AS BUILT INFORMATION		BENCH MARKS		SURVEY INFORMATION		ENGINEER'S SEAL	
CONTRACTOR	DATE	NO.	DATE	NO.	DATE	NO.	DATE

**PRELIMINARY
NOT FOR CONSTRUCTION**

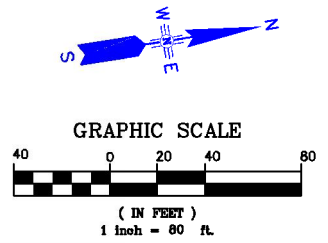
NO.	DATE	REMARKS

DESIGNED BY	DATE	CHECKED BY	DATE
DGS	11/24/14	JEH	11/24/14
DGS	11/24/14		



- KEYED NOTES:**
- ① NEW STANDARD CURB & GUTTER, SEE COA STD. DWG. 2415A.
 - ② NEW ADA COMPLIANT DRIVEPAD, SEE DETAIL SHT. 7
 - ③ REMOVE EXISTING DRIVEPAD
 - ④ NEW 6' WIDE CONCRETE SIDEWALK SEE COA STD. DWG. 2430
 - ⑤ NEW 9' WIDE CONCRETE SIDEWALK SEE COA STD. DWG. 2430
 - ⑥ NEW ADA COMPLIANT CURB RAMP SEE COA STD. DWG. 2441
 - ⑦ NEW LANDSCAPE AREA
 - ⑧ SAWCUT EXISTING ASPHALT
 - ⑨ NEW FULL DEPTH ASPHALT SEE COA STD. DWG. 2407
 - ⑩ PARALLEL PARKING SPACE 8' WIDE X 20' LONG
 - ⑪ RELOCATE EXISTING PNM POLE

- LEGEND:**
- PROPOSED CURB & GUTTER
 - PROPOSED SIDEWALK/DRIVEPAD
 - PROPOSED ASPHALT
 - PROPOSED BUFFER



PARSONS BRINCKERHOFF

CITY OF ALBUQUERQUE
 DEPARTMENT OF MUNICIPAL DEVELOPMENT
 TRANSPORTATION DIVISION
 NORTH FOURTH STREET
 MOUNTAIN ROAD TO CAMINO ESPANOL
 15% ROADWAY PLANS

DESIGN REVIEW COMMITTEE	CITY ENGINEER APPROVAL	MO./DAY/YR.	MO./DAY/YR.

City Project No. COA 5878.91 Zone Map No. Sheet 20 of 28

AS BUILT INFORMATION		BENCH MARKS		SURVEY INFORMATION		ENGINEER'S SEAL	
CONTRACTOR	DATE	NO.	DATE	NO.	DATE	NO.	DATE

**PRELIMINARY
NOT FOR CONSTRUCTION**

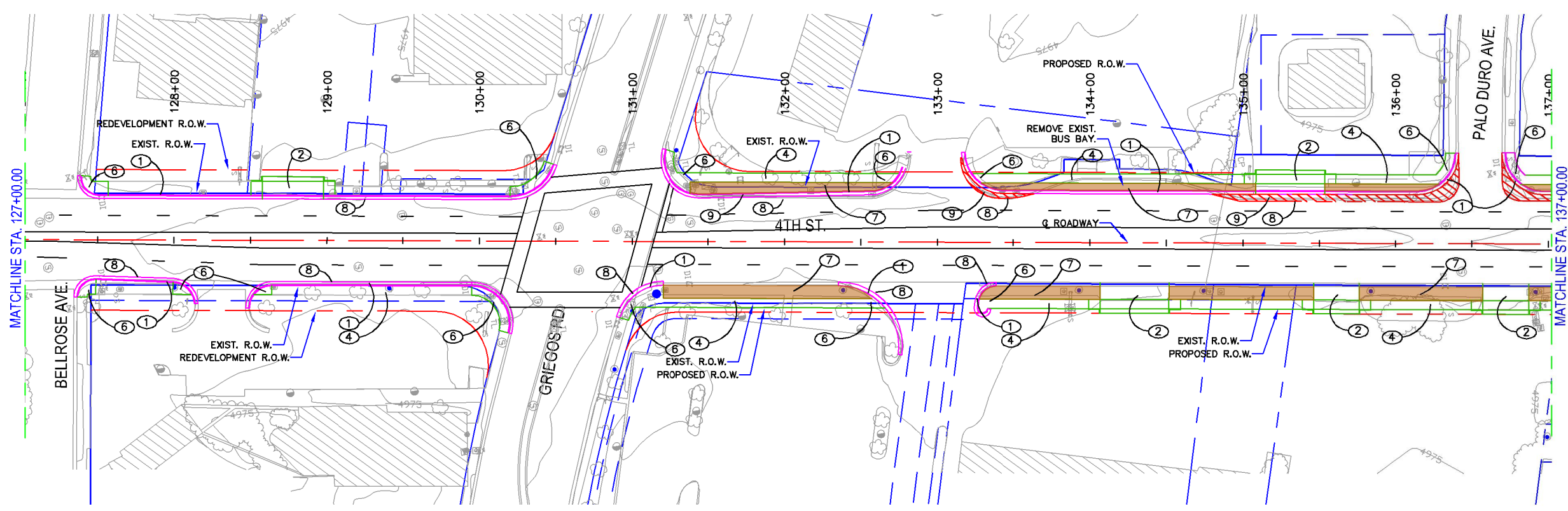
NO.	DATE	REMARKS	BY

DESIGNED BY	DATE	CHECKED BY	DATE
DGS	11/24/14	JEH	11/24/14
DGS	11/24/14		

INTERIM TYPICAL SECTION 5

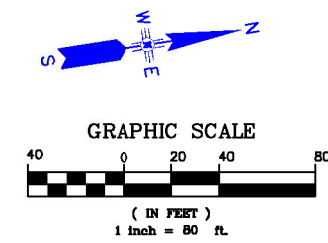
TRANSITION TO PROPOSED TYPICAL SECTION 6

PROPOSED TYPICAL SECTION 6



- KEYED NOTES:**
- ① NEW STANDARD CURB & GUTTER, SEE COA STD. DWG. 2415A.
 - ② NEW ADA COMPLIANT DRIVEPAD, SEE DETAIL SHT. 7
 - ③ REMOVE EXISTING DRIVEPAD
 - ④ NEW 6" WIDE CONCRETE SIDEWALK SEE COA STD. DWG. 2430
 - ⑤ NEW 9" WIDE CONCRETE SIDEWALK SEE COA STD. DWG. 2430
 - ⑥ NEW ADA COMPLIANT CURB RAMP SEE COA STD. DWG. 2441
 - ⑦ NEW LANDSCAPE AREA
 - ⑧ SAWCUT EXISTING ASPHALT
 - ⑨ NEW FULL DEPTH ASPHALT SEE COA STD. DWG. 2407
 - ⑩ PARALLEL PARKING SPACE 8' WIDE X 20' LONG
 - ⑪ RELOCATE EXISTING PNM POLE

- LEGEND:**
- PROPOSED CURB & GUTTER
 - PROPOSED SIDEWALK/DRIVEPAD
 - PROPOSED ASPHALT
 - PROPOSED BUFFER



PARSONS BRINCKERHOFF

CITY OF ALBUQUERQUE
 DEPARTMENT OF MUNICIPAL DEVELOPMENT
 TRANSPORTATION DIVISION
 NORTH FOURTH STREET
 MOUNTAIN ROAD TO CAMINO ESPANOL
 15% ROADWAY PLANS

DESIGN REVIEW COMMITTEE	CITY ENGINEER APPROVAL	MO./DAY/YR.	MO./DAY/YR.

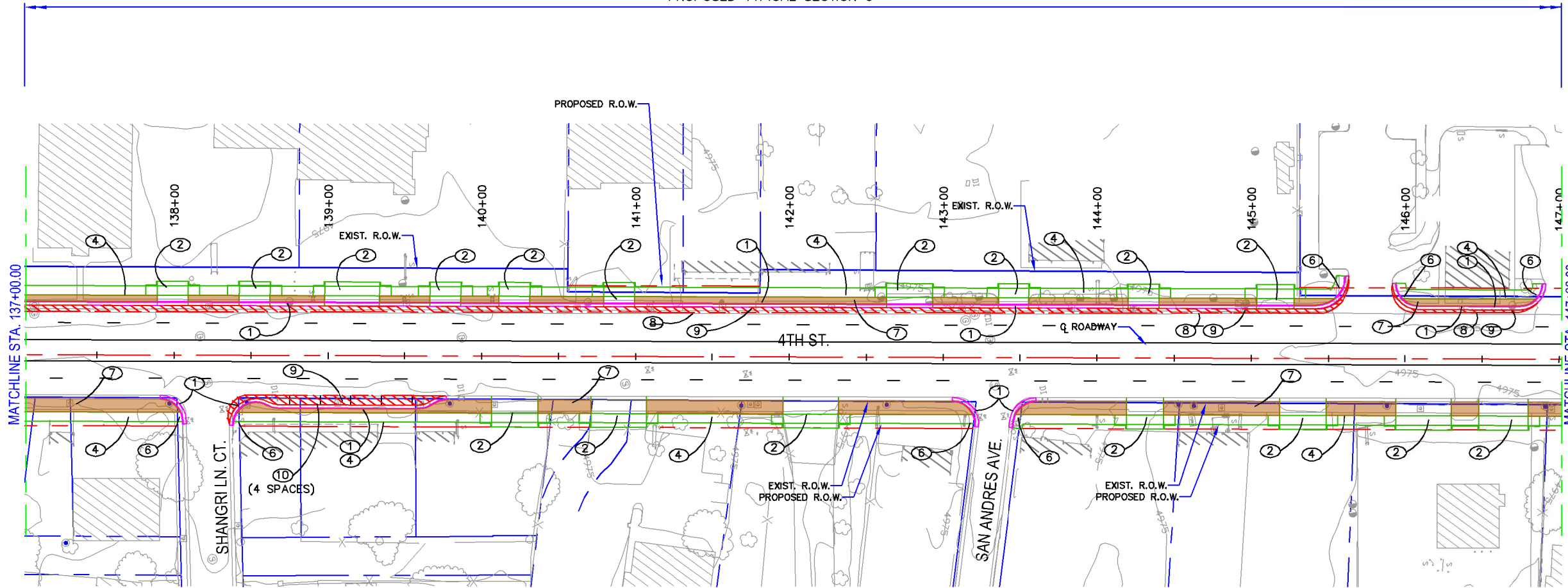
City Project No. COA 5878.91 Zone Map No. Sheet 21 of 28

AS BUILT INFORMATION		BENCH MARKS		SURVEY INFORMATION		ENGINEER'S SEAL	
CONTRACTOR	DATE			NO.	BY	NO.	DATE

**PRELIMINARY
NOT FOR CONSTRUCTION**

DESIGNED BY	DGS	DATE	11/24/14
DRAWN BY	DGS	DATE	11/24/14
CHECKED BY	JEH	DATE	11/24/14

PROPOSED TYPICAL SECTION 6



KEYED NOTES:

- ① NEW STANDARD CURB & GUTTER, SEE COA STD. DWG. 2415A.
- ② NEW ADA COMPLIANT DRIVEPAD, SEE DETAIL SHT. 7
- ③ REMOVE EXISTING DRIVEPAD
- ④ NEW 6' WIDE CONCRETE SIDEWALK SEE COA STD. DWG. 2430
- ⑤ NEW 9' WIDE CONCRETE SIDEWALK SEE COA STD. DWG. 2430
- ⑥ NEW ADA COMPLIANT CURB RAMP SEE COA STD. DWG. 2441
- ⑦ NEW LANDSCAPE AREA
- ⑧ SAWCUT EXISTING ASPHALT
- ⑨ NEW FULL DEPTH ASPHALT SEE COA STD. DWG. 2407
- ⑩ PARALLEL PARKING SPACE 8' WIDE X 20' LONG
- ⑪ RELOCATE EXISTING PNM POLE

LEGEND:

- PROPOSED CURB & GUTTER
- PROPOSED SIDEWALK/DRIVEPAD
- PROPOSED ASPHALT
- PROPOSED BUFFER

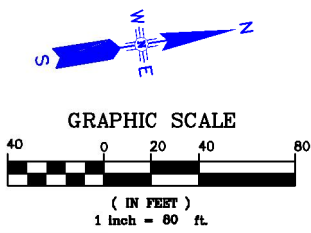
AS BUILT INFORMATION	
CONTRACTOR	DATE
WORK PERFORMED BY	DATE
INSPECTOR'S ACCEPTANCE BY	DATE
FIELD VERIFICATION BY	DATE
DRAWINGS CORRECTED BY	DATE
MICRO-FILM INFORMATION	DATE
RECORDED BY	NO.

BENCH MARKS	
NO.	DATE

SURVEY INFORMATION	
FIELD NOTES	DATE

PRELIMINARY
NOT FOR CONSTRUCTION

ENGINEER'S SEAL	REMARKS	BY	DATE

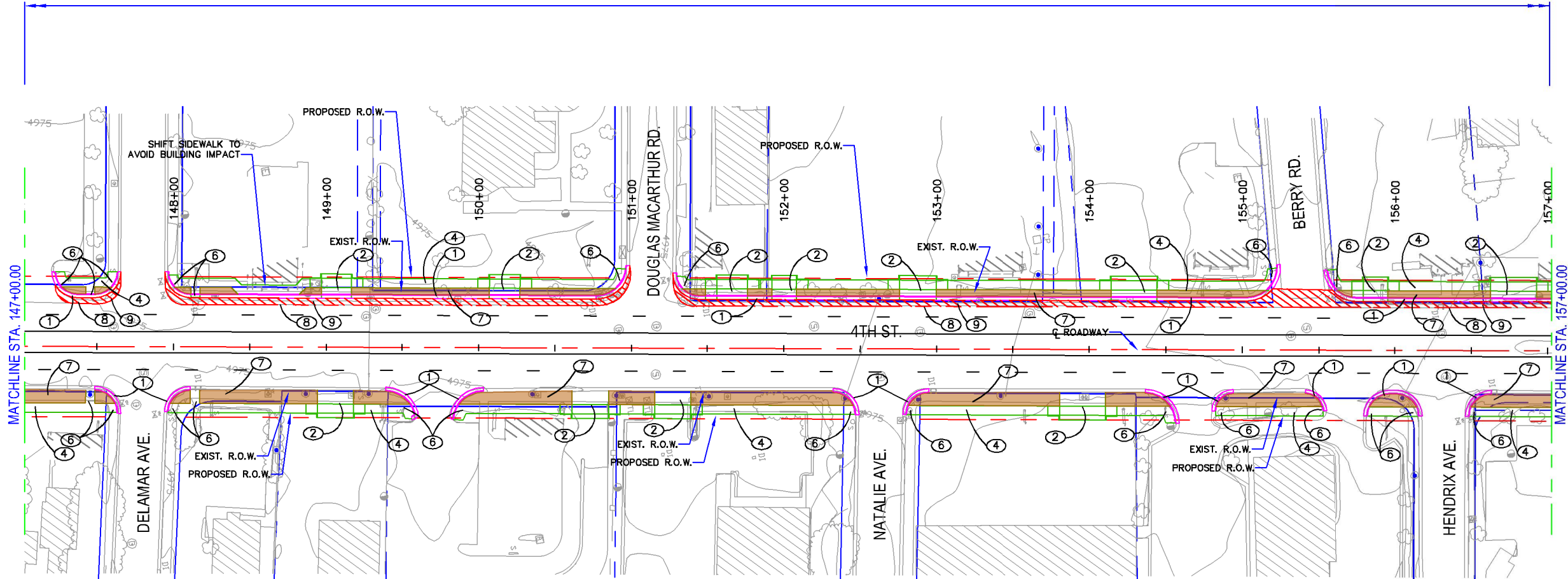


PARSONS BRINCKERHOFF

CITY OF ALBUQUERQUE
DEPARTMENT OF MUNICIPAL DEVELOPMENT
TRANSPORTATION DIVISION
NORTH FOURTH STREET
MOUNTAIN ROAD TO CAMINO ESPANOL
15% ROADWAY PLANS

DESIGN REVIEW COMMITTEE	CITY ENGINEER APPROVAL	MO./DAY/YR.	MO./DAY/YR.

PROPOSED TYPICAL SECTION 6

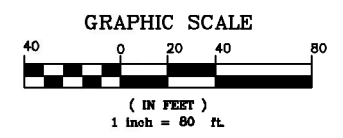


KEYED NOTES:

- ① NEW STANDARD CURB & GUTTER, SEE COA STD. DWG. 2415A.
- ② NEW ADA COMPLIANT DRIVEPAD, SEE DETAIL SHT. 7
- ③ REMOVE EXISTING DRIVEPAD
- ④ NEW 6" WIDE CONCRETE SIDEWALK SEE COA STD. DWG. 2430
- ⑤ NEW 9" WIDE CONCRETE SIDEWALK SEE COA STD. DWG. 2430
- ⑥ NEW ADA COMPLIANT CURB RAMP SEE COA STD. DWG. 2441
- ⑦ NEW LANDSCAPE AREA
- ⑧ SAWCUT EXISTING ASPHALT
- ⑨ NEW FULL DEPTH ASPHALT SEE COA STD. DWG. 2407
- ⑩ PARALLEL PARKING SPACE 8' WIDE X 20' LONG
- ⑪ RELOCATE EXISTING PNM POLE

LEGEND:

- PROPOSED CURB & GUTTER
- PROPOSED SIDEWALK/DRIVEPAD
- - - PROPOSED ASPHALT
- PROPOSED BUFFER



PARSONS BRINCKERHOFF

CITY OF ALBUQUERQUE
DEPARTMENT OF MUNICIPAL DEVELOPMENT
TRANSPORTATION DIVISION
NORTH FOURTH STREET
MOUNTAIN ROAD TO CAMINO ESPANOL
15% ROADWAY PLANS

DESIGN REVIEW COMMITTEE	CITY ENGINEER APPROVAL	MO./DAY/YR.	MO./DAY/YR.

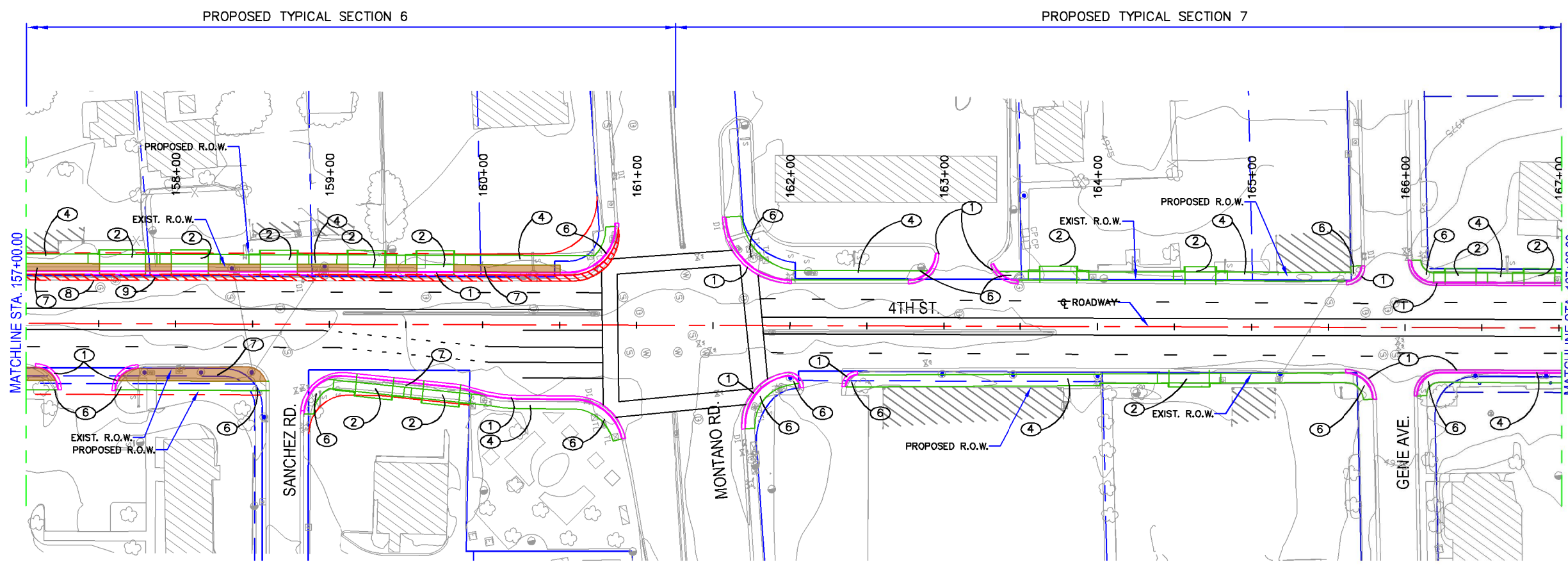
City Project No. COA 5878.91 Zone Map No. Sheet 23 of 28

ENGINEER'S SEAL		SURVEY INFORMATION		BENCH MARKS		AS BUILT INFORMATION	
NO.	DATE	NO.	DATE	NO.	DATE	NO.	DATE

PRELIMINARY
NOT FOR CONSTRUCTION

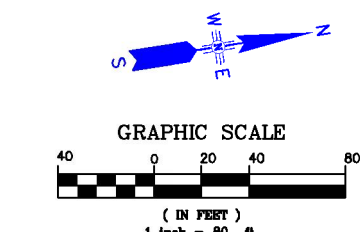
NO.	DATE	REMARKS	BY

DESIGNED BY	DATE	CHECKED BY	DATE
DGS	11/24/14	JEH	11/24/14
DGS	11/24/14		



- KEYED NOTES:**
- ① NEW STANDARD CURB & GUTTER, SEE COA STD. DWG. 2415A.
 - ② NEW ADA COMPLIANT DRIVEPAD, SEE DETAIL SHT. 7
 - ③ REMOVE EXISTING DRIVEPAD
 - ④ NEW 6" WIDE CONCRETE SIDEWALK SEE COA STD. DWG. 2430
 - ⑤ NEW 9" WIDE CONCRETE SIDEWALK SEE COA STD. DWG. 2430
 - ⑥ NEW ADA COMPLIANT CURB RAMP SEE COA STD. DWG. 2441
 - ⑦ NEW LANDSCAPE AREA
 - ⑧ SAWCUT EXISTING ASPHALT
 - ⑨ NEW FULL DEPTH ASPHALT SEE COA STD. DWG. 2407
 - ⑩ PARALLEL PARKING SPACE 8' WIDE X 20' LONG
 - ⑪ RELOCATE EXISTING PNM POLE

- LEGEND:**
- PROPOSED CURB & GUTTER
 - PROPOSED SIDEWALK/DRIVEPAD
 - PROPOSED ASPHALT
 - PROPOSED BUFFER



PARSONS BRINCKERHOFF

CITY OF ALBUQUERQUE
 DEPARTMENT OF MUNICIPAL DEVELOPMENT
 TRANSPORTATION DIVISION
 NORTH FOURTH STREET
 MOUNTAIN ROAD TO CAMINO ESPANOL
 15% ROADWAY PLANS

DESIGN REVIEW COMMITTEE	CITY ENGINEER APPROVAL	MO./DAY/YR.	MO./DAY/YR.

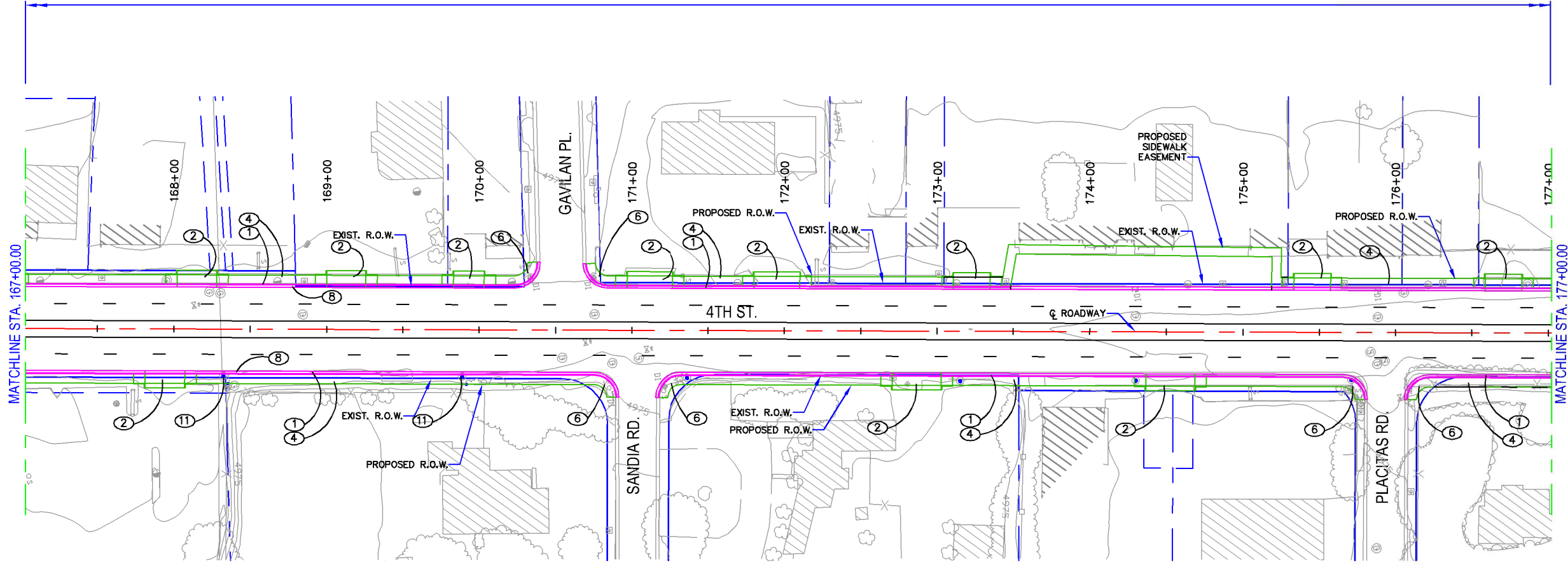
City Project No. COA 5878.91 Zone Map No. Sheet 24 of 28

AS BUILT INFORMATION		BENCH MARKS		SURVEY INFORMATION		ENGINEER'S SEAL	
CONTRACTOR	DATE	NO.	DATE	NO.	DATE	NO.	DATE

**PRELIMINARY
NOT FOR CONSTRUCTION**

DESIGNED BY	DGS	DATE	11/24/14
DRAWN BY	DGS	DATE	11/24/14
CHECKED BY	JEH	DATE	11/24/14

PROPOSED TYPICAL SECTION 7

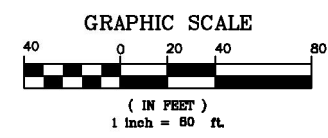


KEYED NOTES:

- ① NEW STANDARD CURB & GUTTER, SEE COA STD. DWG. 2415A.
- ② NEW ADA COMPLIANT DRIVEPAD, SEE DETAIL SH. 7
- ③ REMOVE EXISTING DRIVEPAD
- ④ NEW 6" WIDE CONCRETE SIDEWALK SEE COA STD. DWG. 2430
- ⑤ NEW 9" WIDE CONCRETE SIDEWALK SEE COA STD. DWG. 2430
- ⑥ NEW ADA COMPLIANT CURB RAMP SEE COA STD. DWG. 2441
- ⑦ NEW LANDSCAPE AREA
- ⑧ SAWCUT EXISTING ASPHALT
- ⑨ NEW FULL DEPTH ASPHALT SEE COA STD. DWG. 2407
- ⑩ PARALLEL PARKING SPACE 8' WIDE X 20' LONG
- ⑪ RELOCATE EXISTING PNM POLE

LEGEND:

- PROPOSED CURB & GUTTER
- PROPOSED SIDEWALK/DRIVEPAD
- PROPOSED ASPHALT
- PROPOSED BUFFER



PARSONS BRINCKERHOFF

CITY OF ALBUQUERQUE
 DEPARTMENT OF MUNICIPAL DEVELOPMENT
 TRANSPORTATION DIVISION
 NORTH FOURTH STREET
 MOUNTAIN ROAD TO CAMINO ESPANOL
 15% ROADWAY PLANS

DESIGN REVIEW COMMITTEE	CITY ENGINEER APPROVAL	MO./DAY/YR.	MO./DAY/YR.

City Project No. COA 5878.91 Zone Map No. Sheet 25 of 28

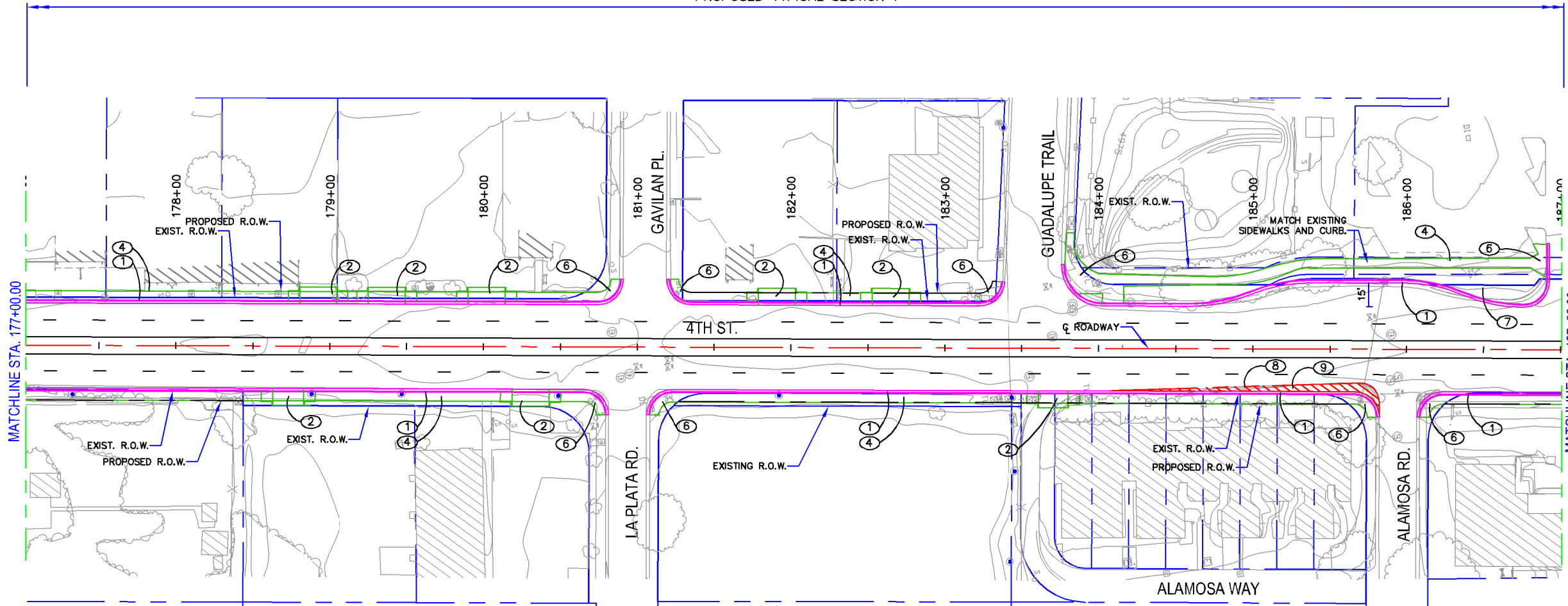
AS BUILT INFORMATION		BENCH MARKS		SURVEY INFORMATION		ENGINEER'S SEAL	
CONTRACTOR	DATE	NO.	DATE	NO.	DATE	NO.	DATE

**PRELIMINARY
NOT FOR CONSTRUCTION**

NO.	DATE	REMARKS	BY

DESIGNED BY	DATE	CHECKED BY	DATE
DGS	11/24/14	JEH	11/24/14
DGS	11/24/14		

PROPOSED TYPICAL SECTION 7

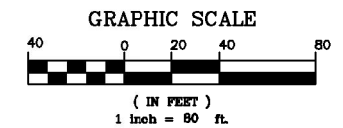


KEYED NOTES:

- ① NEW STANDARD CURB & GUTTER, SEE COA STD. DWG. 2415A.
- ② NEW ADA COMPLIANT DRIVEPAD, SEE DETAIL SHT. 7
- ③ REMOVE EXISTING DRIVEPAD
- ④ NEW 6" WIDE CONCRETE SIDEWALK SEE COA STD. DWG. 2430
- ⑤ NEW 9" WIDE CONCRETE SIDEWALK SEE COA STD. DWG. 2430
- ⑥ NEW ADA COMPLIANT CURB RAMP SEE COA STD. DWG. 2441
- ⑦ NEW LANDSCAPE AREA
- ⑧ SAWCUT EXISTING ASPHALT
- ⑨ NEW FULL DEPTH ASPHALT SEE COA STD. DWG. 2407
- ⑩ PARALLEL PARKING SPACE 8' WIDE X 20' LONG
- ⑪ RELOCATE EXISTING PNM POLE

LEGEND:

- PROPOSED CURB & GUTTER
- PROPOSED SIDEWALK/DRIVEPAD
- PROPOSED ASPHALT
- PROPOSED BUFFER



PARSONS BRINCKERHOFF

CITY OF ALBUQUERQUE
DEPARTMENT OF MUNICIPAL DEVELOPMENT
TRANSPORTATION DIVISION
NORTH FOURTH STREET
MOUNTAIN ROAD TO CAMINO ESPANOL
15% ROADWAY PLANS

DESIGN REVIEW COMMITTEE	CITY ENGINEER APPROVAL	MO./DAY/YR.	MO./DAY/YR.

City Project No. COA 5878.91 Zone Map No. Sheet 26 of 28

AS BUILT INFORMATION	
CONTRACTOR	DATE
WORK PERFORMED BY	DATE
INSPECTOR'S ACCEPTANCE BY	DATE
FIELD VERIFICATION BY	DATE
DRAWINGS CORRECTED BY	DATE
MICRO-FILM INFORMATION	DATE
RECORDED BY	NO.

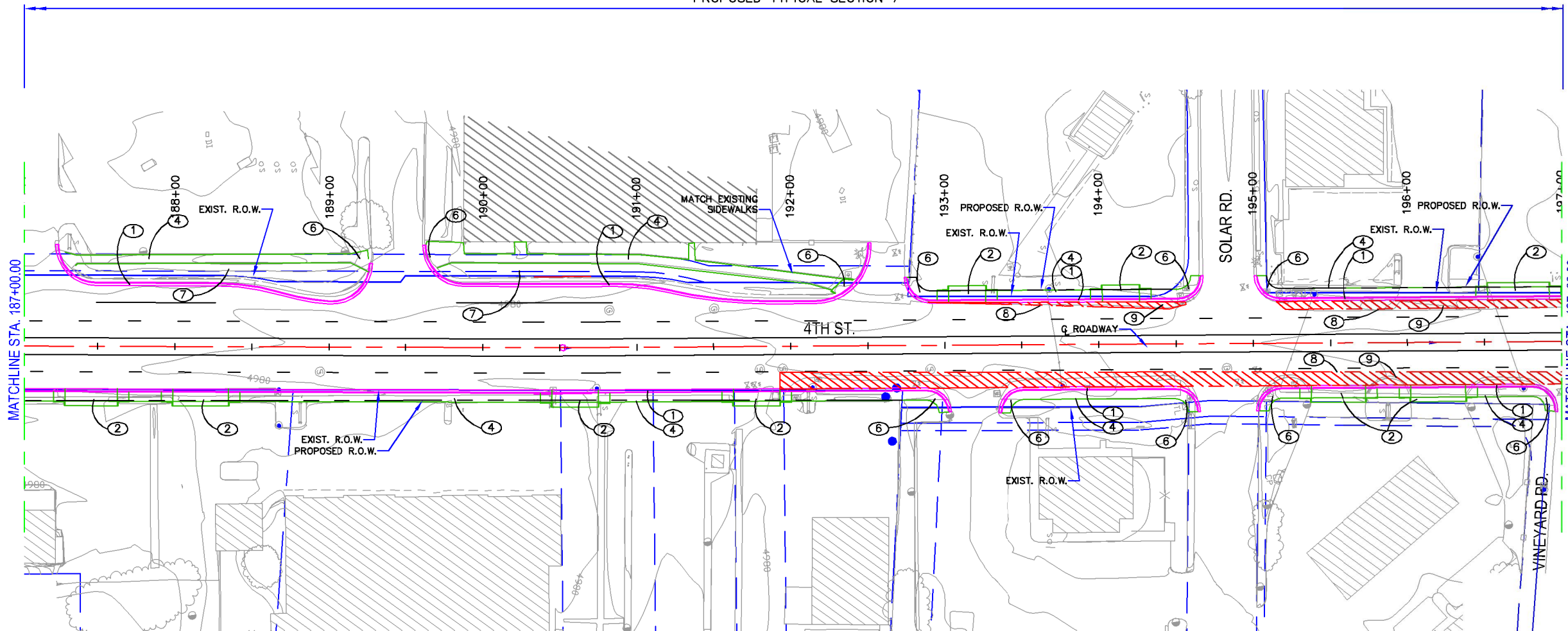
SURVEY INFORMATION	
FIELD NOTES	DATE
NO.	
BY	

**PRELIMINARY
NOT FOR CONSTRUCTION**

ENGINEER'S SEAL	REMARKS	BY	DATE

DESIGNED BY	DATE
DGS	11/24/14
DRAWN BY	DATE
JEH	11/24/14
CHECKED BY	DATE

PROPOSED TYPICAL SECTION 7

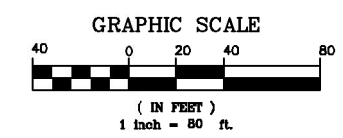


KEYED NOTES:

- ① NEW STANDARD CURB & GUTTER, SEE COA STD. DWG. 2415A.
- ② NEW ADA COMPLIANT DRIVEPAD, SEE DETAIL SHT. 7
- ③ REMOVE EXISTING DRIVEPAD
- ④ NEW 6" WIDE CONCRETE SIDEWALK SEE COA STD. DWG. 2430
- ⑤ NEW 9" WIDE CONCRETE SIDEWALK SEE COA STD. DWG. 2430
- ⑥ NEW ADA COMPLIANT CURB RAMP SEE COA STD. DWG. 2441
- ⑦ NEW LANDSCAPE AREA
- ⑧ SAWCUT EXISTING ASPHALT
- ⑨ NEW FULL DEPTH ASPHALT SEE COA STD. DWG. 2407
- ⑩ PARALLEL PARKING SPACE 8' WIDE X 20' LONG
- ⑪ RELOCATE EXISTING PNM POLE

LEGEND:

- PROPOSED CURB & GUTTER
- PROPOSED SIDEWALK/DRIVEPAD
- PROPOSED ASPHALT
- PROPOSED BUFFER



PARSONS BRINCKERHOFF

CITY OF ALBUQUERQUE
 DEPARTMENT OF MUNICIPAL DEVELOPMENT
 TRANSPORTATION DIVISION
 NORTH FOURTH STREET
 MOUNTAIN ROAD TO CAMINO ESPANOL
 15% ROADWAY PLANS

DESIGN REVIEW COMMITTEE	CITY ENGINEER APPROVAL	MO./DAY/YR.	MO./DAY/YR.

City Project No. COA 5878.91 Zone Map No. Sheet 27 of 28

AS BUILT INFORMATION	
CONTRACTOR	DATE
WORK PERFORMED BY	DATE
INSPECTOR'S ACCEPTANCE BY	DATE
FIELD VERIFICATION BY	DATE
DRAWINGS CORRECTED BY	DATE
MICRO-FILM INFORMATION	DATE
RECORDED BY	NO.

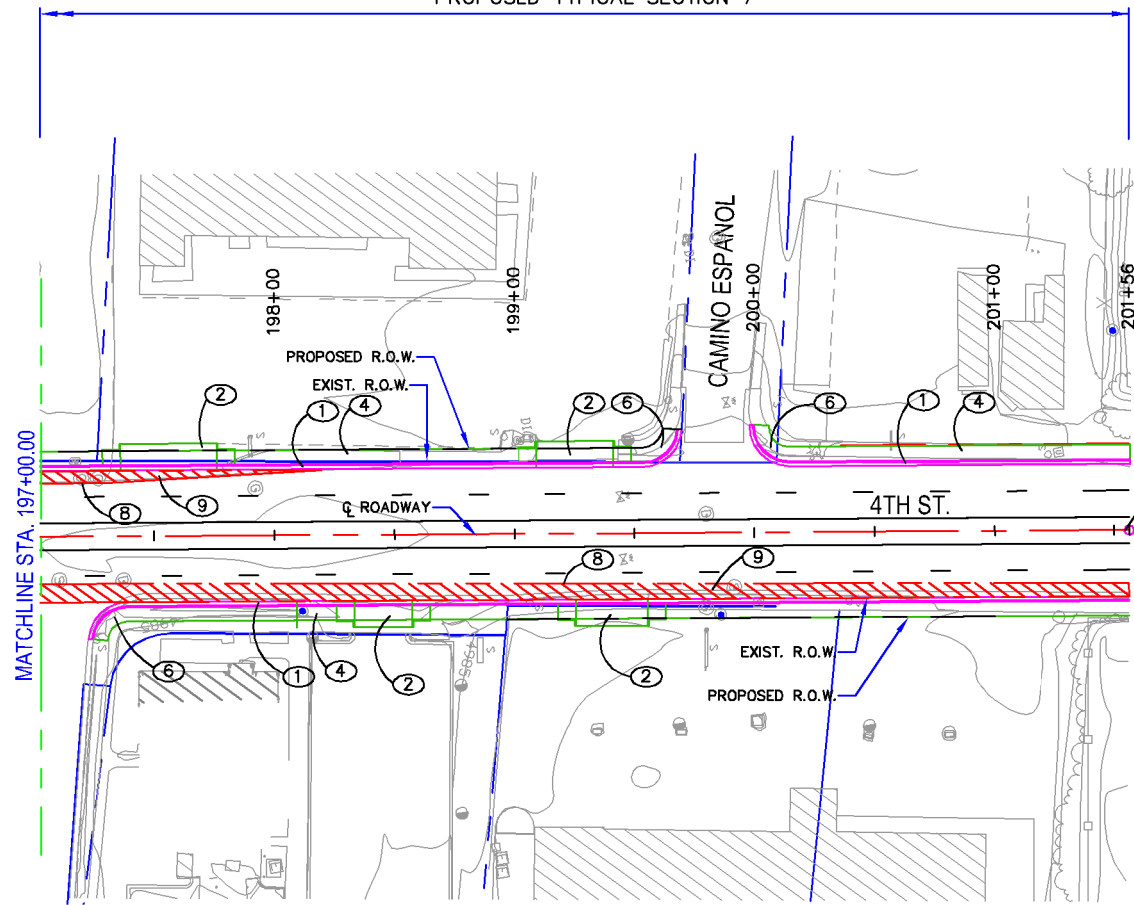
SURVEY INFORMATION	
FIELD NOTES	DATE
NO.	

ENGINEER'S SEAL	
NO.	DATE

**PRELIMINARY
NOT FOR CONSTRUCTION**

REMARKS	BY	DATE
DESIGN		11/24/14
DGS		11/24/14
DGS		11/24/14
JEH		11/24/14

PROPOSED TYPICAL SECTION 7



STA. 201+56.27
END OF PROJECT
MATCH EXISTING

KEYED NOTES:

- ① NEW STANDARD CURB & GUTTER, SEE COA STD. DWG. 2415A.
- ② NEW ADA COMPLIANT DRIVEPAD, SEE DETAIL SHT. 7
- ③ REMOVE EXISTING DRIVEPAD
- ④ NEW 6" WIDE CONCRETE SIDEWALK SEE COA STD. DWG. 2430
- ⑤ NEW 9" WIDE CONCRETE SIDEWALK SEE COA STD. DWG. 2430
- ⑥ NEW ADA COMPLIANT CURB RAMP SEE COA STD. DWG. 2441
- ⑦ NEW LANDSCAPE AREA
- ⑧ SAWCUT EXISTING ASPHALT
- ⑨ NEW FULL DEPTH ASPHALT SEE COA STD. DWG. 2407
- ⑩ PARALLEL PARKING SPACE 8' WIDE X 20' LONG
- ⑪ RELOCATE EXISTING PNM POLE

LEGEND:

- PROPOSED CURB & GUTTER
- PROPOSED SIDEWALK/DRIVEPAD
- PROPOSED ASPHALT
- PROPOSED BUFFER

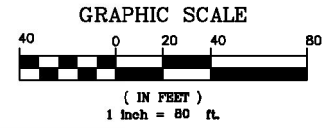
AS BUILT INFORMATION	
CONTRACTOR	DATE
WORK PERFORMED BY	DATE
INSPECTOR'S ACCEPTANCE BY	DATE
FIELD VERIFICATION BY	DATE
DRAWINGS CORRECTED BY	DATE
MICRO-FILM INFORMATION	DATE
RECORDED BY	DATE
NO.	

BENCH MARKS	
NO.	DATE

SURVEY INFORMATION	
FIELD NOTES	DATE
NO.	BY

**PRELIMINARY
NOT FOR CONSTRUCTION**

ENGINEER'S SEAL	REMARKS	BY	DATE



PARSONS BRINCKERHOFF

CITY OF ALBUQUERQUE
DEPARTMENT OF MUNICIPAL DEVELOPMENT
TRANSPORTATION DIVISION
NORTH FOURTH STREET
MOUNTAIN ROAD TO CAMINO ESPAÑOL
15% ROADWAY PLANS

DESIGN REVIEW COMMITTEE	CITY ENGINEER APPROVAL	MO./DAY/YR.	MO./DAY/YR.